

# **LANUDJD4000K**

## **Installation Instructions**

**Unloading Auger Electric Clutch Disengage System**

**John Deere® 00, 10 & 50 Series Walker Combines**

**The initial burnish process of the clutches contained in this kit has been performed by Lankota prior to shipment.**

# **LANKOTA®**

**270 West Park Avenue**

**Huron, SD 57350**

**866-526-5682**

## Warnings

- Do NOT use with automatic lubrication system
- Clutches must have a continuous 12V or more when in use to operate properly
- Wiring MUST be grounded directly to the battery
- Clean out grain tank sump drain WEEKLY
- After several days of non-use, re-burnish clutches using the method described in the back of the manual
- NEVER leave wet grain in grain tank

***FAILURE TO FOLLOW THESE WARNINGS WILL VOID ANY AND ALL WARRANTIES, IMPLIED OR EXPRESSED.***

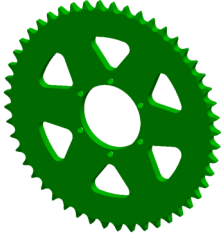




## Numerical Parts List

<b>Part Number</b>	<b>Description</b>	<b>Qty.</b>
LANUDJD1001	Shaft Drill Jig	1
LANUDJD4100	Clutch Alignment Flex Bracket	1
LANI-5228-48	Electro Magnetic Clutch - REAR	1
LANI-5228-56	Electro Magnetic Clutch - FRONT	1
LAN60A49	#60, 49 Tooth Sprocket	2
LANUDJD3004	Door Latch Bracket	1
LANUDJD3005	Front Door Bracket	1
LANUDJD3006	Rear Door Bracket	1
LANUDJD4010	Rear Door Stop	1
LANUDJD4011	Door Latch Bracket	1
LANUDJD4012	Front Door Stop - Bolt Plate	1
LANUDJD4013	Front Door Stop	1
LANUDJD1004	Sprocket Shim	6
LANFHKGV5	Key—8 x 10 x 40mm	2
LAN5218-251-016	Clutch Wire Lead	2
CABAS1536	Rubber Molding	1

# Numerical Parts List

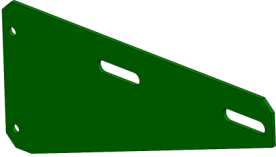
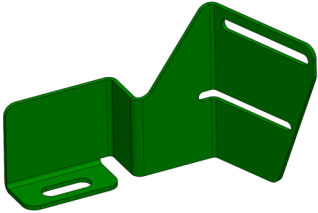

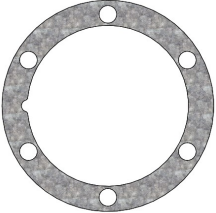
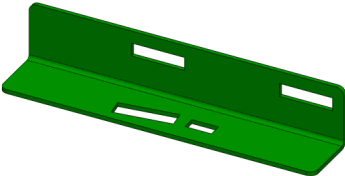
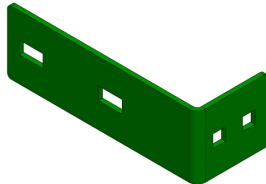


Part Number	Description	Qty.
LANUDJDBH	Bag Of Hardware	1
-----	25/64" Drill Bit	1
-----	7/16" Lock Washer	2
-----	7/16" x 2" Grade 5 Bolt	2
-----	7/16"-14 Drill Tap	1
-----	M8-1.25 x 25mm, Grade 8.8 Bolt	16
-----	M8 Lock Washer	12
-----	M8 Nyloc Nut	4
-----	5/16" SAE Flat Washer	8
-----	11" Zip Tie	10
-----	3/8"-16 x 3/4" Carriage Bolt	2
-----	3/8"-16 x 1" Bolt	3
-----	3/8" Serrated Flange Nut	5
-----	5/8" Washer	10
LANHT9260	Wiring Harness Bundle	1
-----	Cab Extension Harness	2
-----	Power Harness	1
-----	Cab Foot Switch	1
-----	Clutch Harness	1
-----	Wiring Harness Bundle Hardware Bag	1

# Pictorial Parts List

				
<b>LANUDJD1001</b>	<b>LAN60A49 (2)</b>	<b>LANI-5228-48 (1)</b>	<b>LANI-5228-56 (1)</b>	<b>LAN5218-251-016 (2)</b>
				
<b>Cab Extension Harness</b>	<b>Power Harness</b>	<b>Clutch Harness</b>	<b>Cab Foot Switch</b>	<b>Wiring Kit Bag of Hardware</b>
				
<b>LANUDJD4100 (1)</b>	<b>M8 Lock Washer (12)</b>	<b>7/16" Lock Washer (2)</b>	<b>7/16"-14 Tap</b>	<b>25/64" Drill Bit</b>
				
<b>M8-1.25 X 25mm, Gr 8.8 Bolt (16)</b>	<b>M8 Nyloc Nut (4)</b>	<b>5/16" SAE Flat Washer (8)</b>	<b>7/16" x 2" Grade 5 Bolt (2)</b>	<b>11" Zip Tie (10)</b>



# Pictorial Parts List

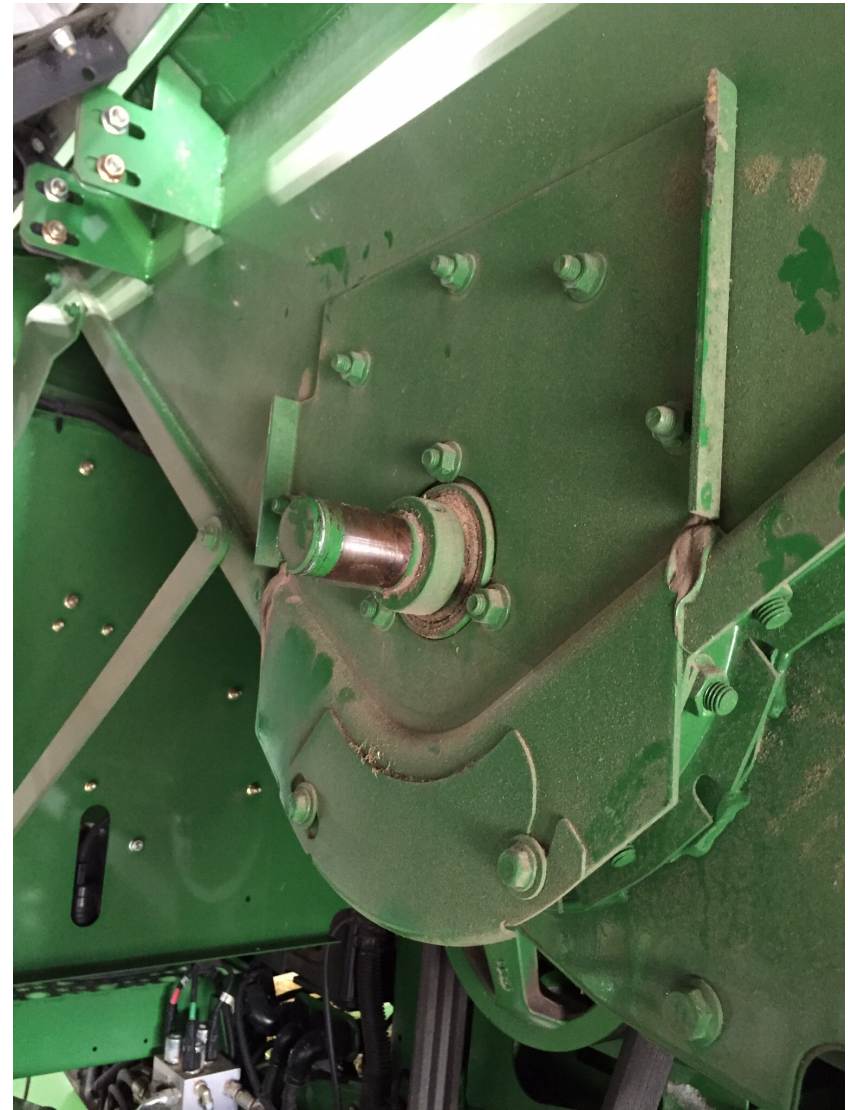
				
LANUDJD3004 (1)	LANUDJD3005 (1)	LANUDJD3006 (1)	8x10 x 40mm Key (2)	LANUDJD1004 (6)
				
5/8" SAE Flat Washer (10)	LANUDJD4010 (1)	LANUDJD4011 (1)	LANUDJD4012 (1)	LANUDJD4013 (1)
				
CABAS1536	3/8" Serrated Flange Nut (5)	3/8" x 1" Hex Bolt (3)	3/8" x 3/4" Carriage Bolt (2)	

# Preparation

Refer To Figure 1.1

1. Open L/H main access door on combine, exposing the unloading auger drive chain system.
2. Loosen drive chain tensioner completely.
3. Remove drive chain; let it hang from rear main drive sprocket or set it aside for later reinstallation.
4. Remove both grain tank cross auger drive sprockets from auger shafts. Leave bearing locking collar and square shaft key installed on shafts just as they are. **DO NOT TRY TO REMOVE BEARING LOCKING COLLAR OR SQUARE KEY FROM SHAFT!**
5. Use emery cloth to clean any scuffs, burs or paint from end of shaft. This will make installation of new components much easier.

Figure 1.1



# 1. Clutch & Sprocket Installation

Refer To Figure 1.2

1. Locate the 25/64" Drill Bit that is supplied in the bag of hardware. Measure from the cutting end of the drill bit back towards the shank 3" inches and make a visible mark.
2. Slide Shaft Drill Jig (LANUDJD1001) over the end of front exposed auger shaft. Make sure jig is on all the way.

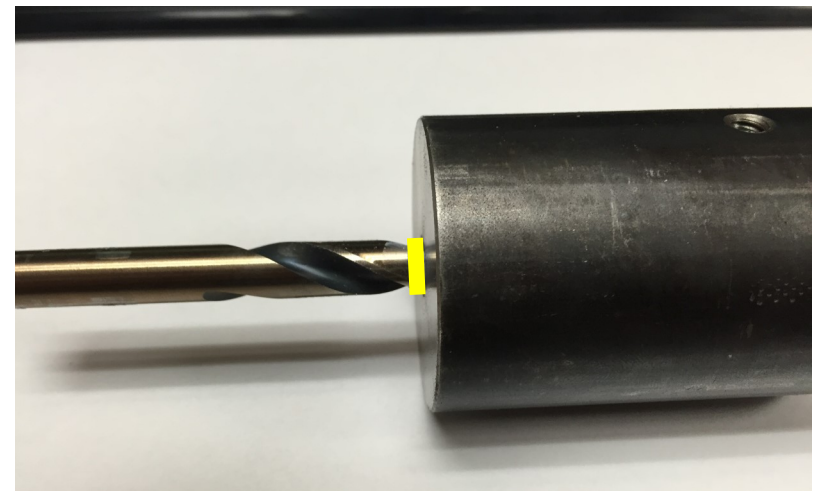
Refer To Figure 1.3

3. Using the jig as a guide, drill into the end of the shaft deep enough so that your 3" mark is flush with the end of the Shaft Drill Jig. **MAKE SURE YOU DRILL AT LEAST THIS DEEP. IF YOU DRILL DEEPER THAT IS OK.**
4. Repeat these steps for the second, rear auger shaft.
5. Remove Shaft Drill Jig from shaft. You will no longer use this jig.

Figure 1.2



Figure 1.3





# 1. Clutch & Sprocket Installation

Refer To Figure 1.4

6. Use a pipe wrench or equivalent to hold auger shaft from turning while tapping the drilled hole. Locate the 7/16" Tap supplied in the hardware bag and tap the holes drilled in both auger shafts. Make sure the threads are a minimum 1-1/4" deep.
7. Use a cutting oil or spray lubricant if possible to get the best thread results.

*Figure 1.4*



# 1. Clutch & Sprocket Installation

Refer To Figure 1.5

8. Locate twelve of the M8-1.25 x 25mm, Grade 8.8 Bolts and twelve of the M8 Lock Washers from the supplied bag of hardware. Attach a #60, 60 Tooth Sprocket (LAN60A60) to the Electro Magnetic Clutch (LANI-5228-48) using six bolts and lock washers - This will go on the **REAR CROSS AUGER**.
9. Attach another sprocket to the Electro Magnetic Clutch (LANI-5228-56) using the remaining fasteners - This will go on the **FRONT CROSS AUGER**.

NOTE: Bolts may be tightened at this time.

Figure 1.5





# 1. Clutch & Sprocket Installation

Refer to Figure 1.6 & 1.7

## NOTES:

- Shims (LANUDJD1004) are provided to bolt between the clutch and sprocket and 5/8" washers are provided to place between the clutch and auger shaft. *NOTE: You may not need to use any of these. The installer needs to make sure all sprockets run on the same plane and line up with the chain properly.*
  - It is **STRONGLY** recommended that anti-seize be applied to the auger shaft before installing the clutch & sprocket assembly.
  - Use a small amount of thread locking compound on each bolt to secure clutch/sprocket assembly to drilled shafts.
10. Install both front and rear clutch/sprocket assemblies onto drilled auger shafts using one 7/16" x 2" Grade 5 Bolt with thread locking compound and one 7/16" Lock Washer per shaft.
11. Re-install the unloading system chain on the new sprocket/clutch assemblies.

Figure 1.6

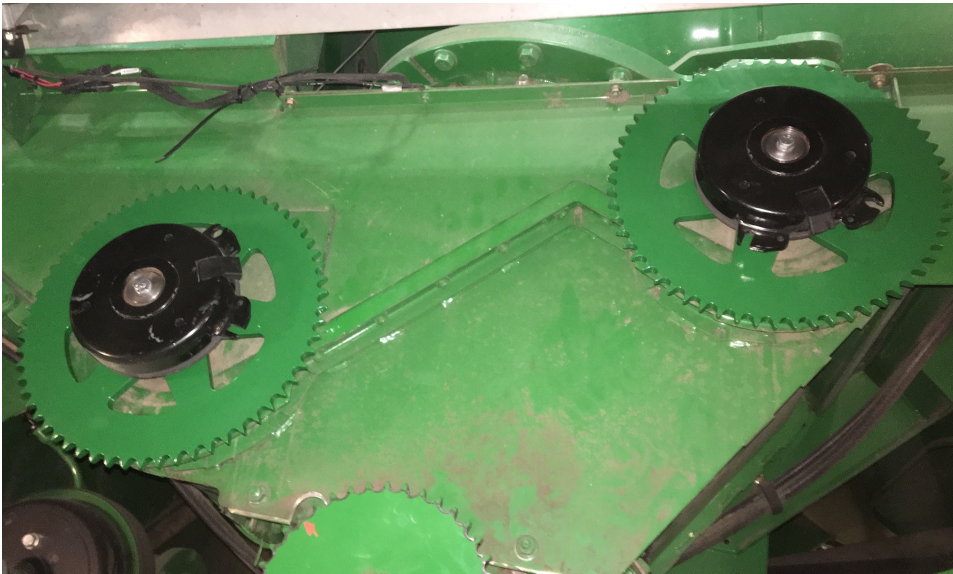
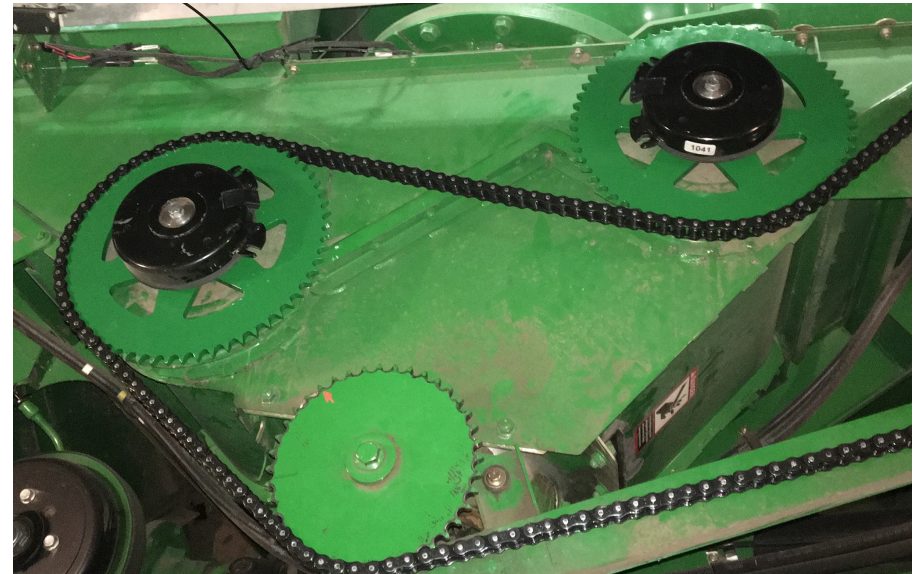


Figure 1.7

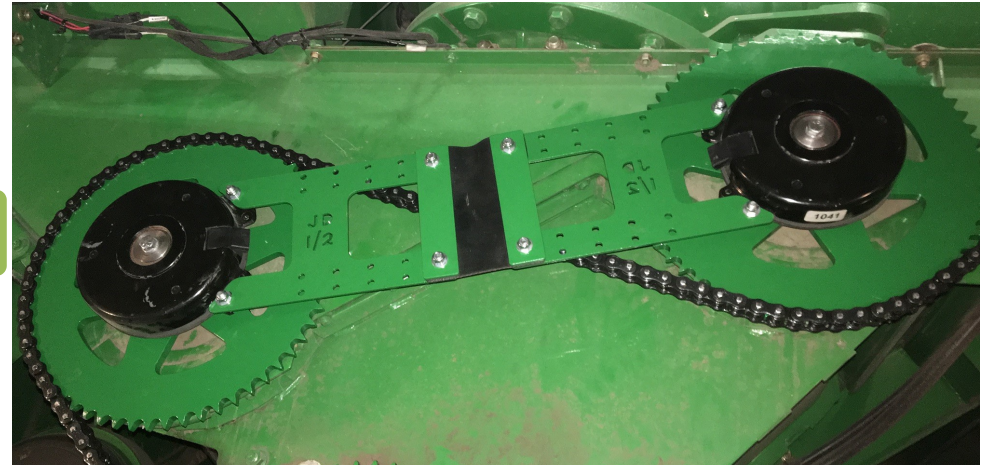


# 1. Clutch & Sprocket Installation

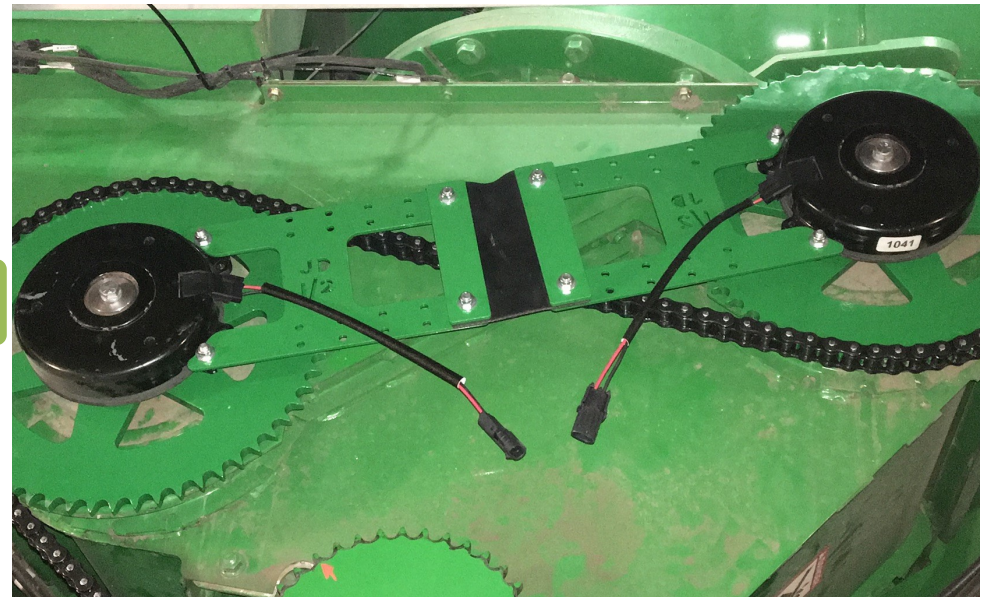
Refer to Figure 1.8 & 1.9

12. Locate four M8-1.25 x 25mm, Grade 8.8 Bolts, four M8 Nyloc Nuts and eight 5/16" SAE Flat Washers from the supplied bag of hardware and use to attach Clutch Alignment Bracket (LANUDJD3002) to both front and rear clutch assemblies. Tighten at this time.
13. Plug a clutch wire lead (LAN5218-251-016) into each of the clutches
14. Tighten the unload drive chain as outlined in the COMBINE OPERATOR'S MANUAL.

*Figure 1.8*



*Figure 1.9*



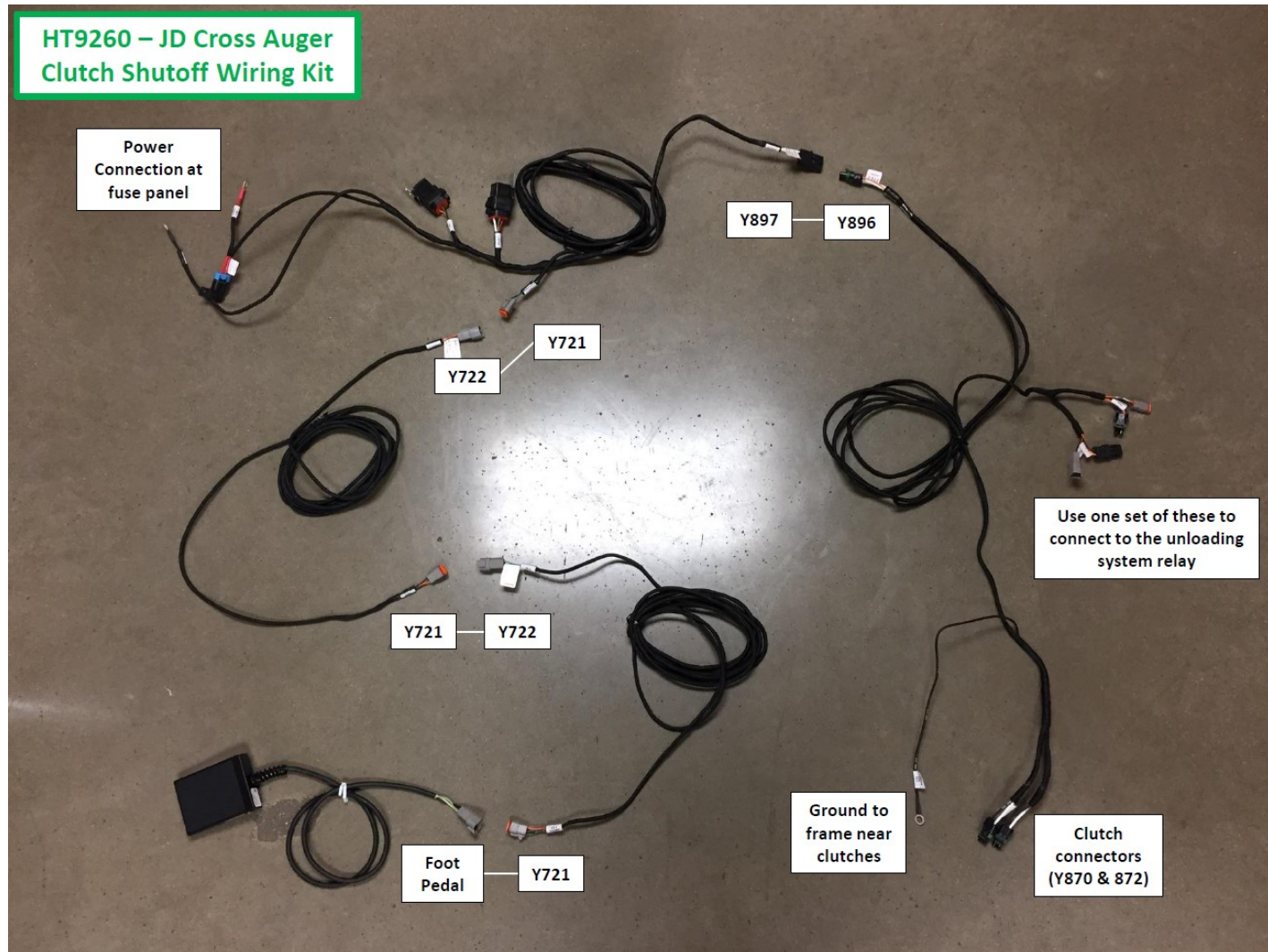


## 2. Rear Wiring Harness Installation

Refer to Figure 2.1

1. Open the wiring harness box and unpack.

*Figure 2.1*





## 2. Rear Wiring Harness Installation

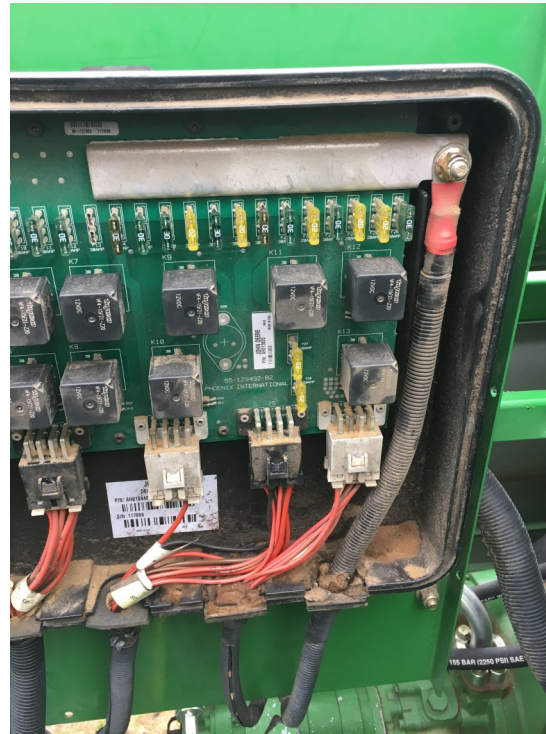
Refer to Figures 2.2 - 2.4

2. Identify the power cable and connect the red wire to the battery cable terminal. This may look different depending on your model of combine - see Figures 2.2a - 2.2c.

*Figure 2.2a*



*Figure 2.2b*



*Figure 2.2c*





## 2. Rear Wiring Harness Installation

Refer to Figures 2.3 & 2.4

3. Attach the relays near the fuse panel using the included attachment plate and existing hardware.
4. Connect the ground wire to the negative battery terminal.

*Figure 2.3*



*Figure 2.4*

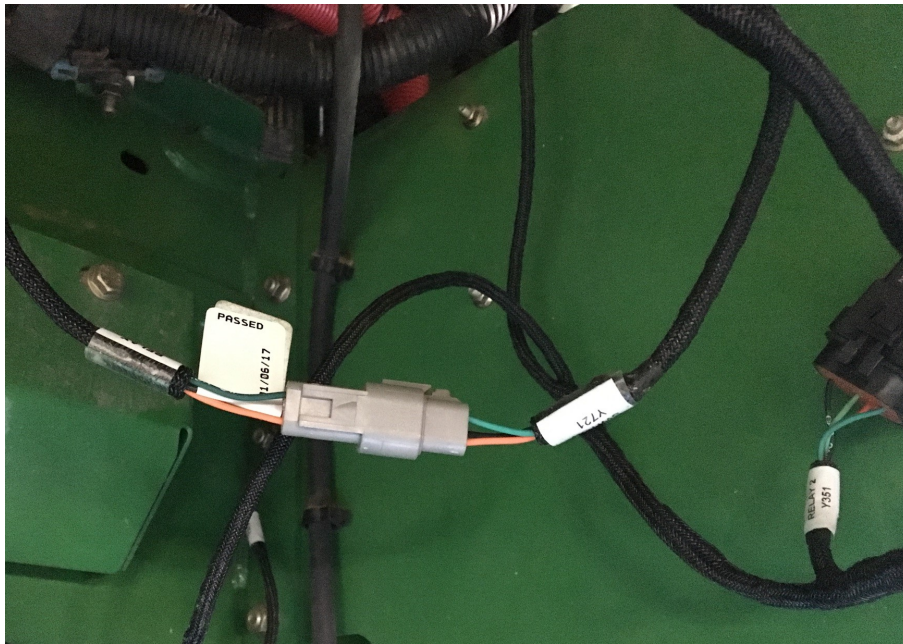




## 2. Rear Wiring Harness Installation

Refer to Figures 2.5 & 2.6

5. Connect one of the cab extension cords to the power cable.
6. Run the ends of the two cords together across the combine, under the rotor drive belt and on top of the sieve.



*Figure 2.5*



*Figure 2.6*



## 2. Rear Wiring Harness Installation

Refer to Figure 2.7

The supplied wiring harness has two different style connector ends to fit many different model combines. Choose either the black connectors or the gray connectors that match your combines connectors.

7. Retrieve the clutch connecting wiring harness.
8. Access the engine compartment.
9. Locate the unloading auger solenoid wiring connectors on the left side of the engine.

*Figure 2.7*



## 2. Rear Wiring Harness Installation

Refer to Figure 2.8 & 2.9

The supplied wiring harness has two different style connector ends to fit many different model combines. Choose either the black connectors or the gray connectors that match your combine's.

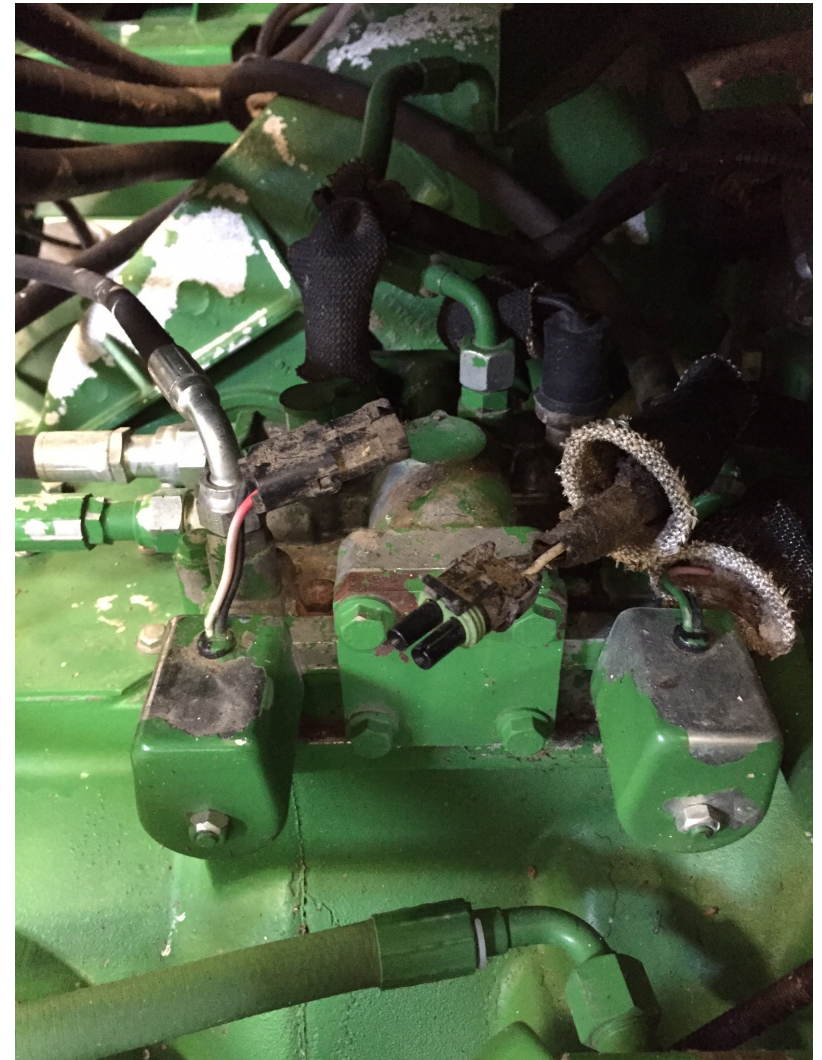
10. Loosen protective covering on L/H solenoid.

11. Disconnect **L/H ONLY** wiring connectors as shown in Figure 2.3.

Figure 2.8



Figure 2.9





## 2. Rear Wiring Harness Installation

Refer to Figure 2.10

12. Connect either the black connectors or the gray connectors of the wiring harness to the connectors on the combine. Whichever connectors do not get used, connect those together as shown in the picture shown by the yellow arrow.
13. Replace wiring harness protective cover previously removed. Secure with a zip tie.

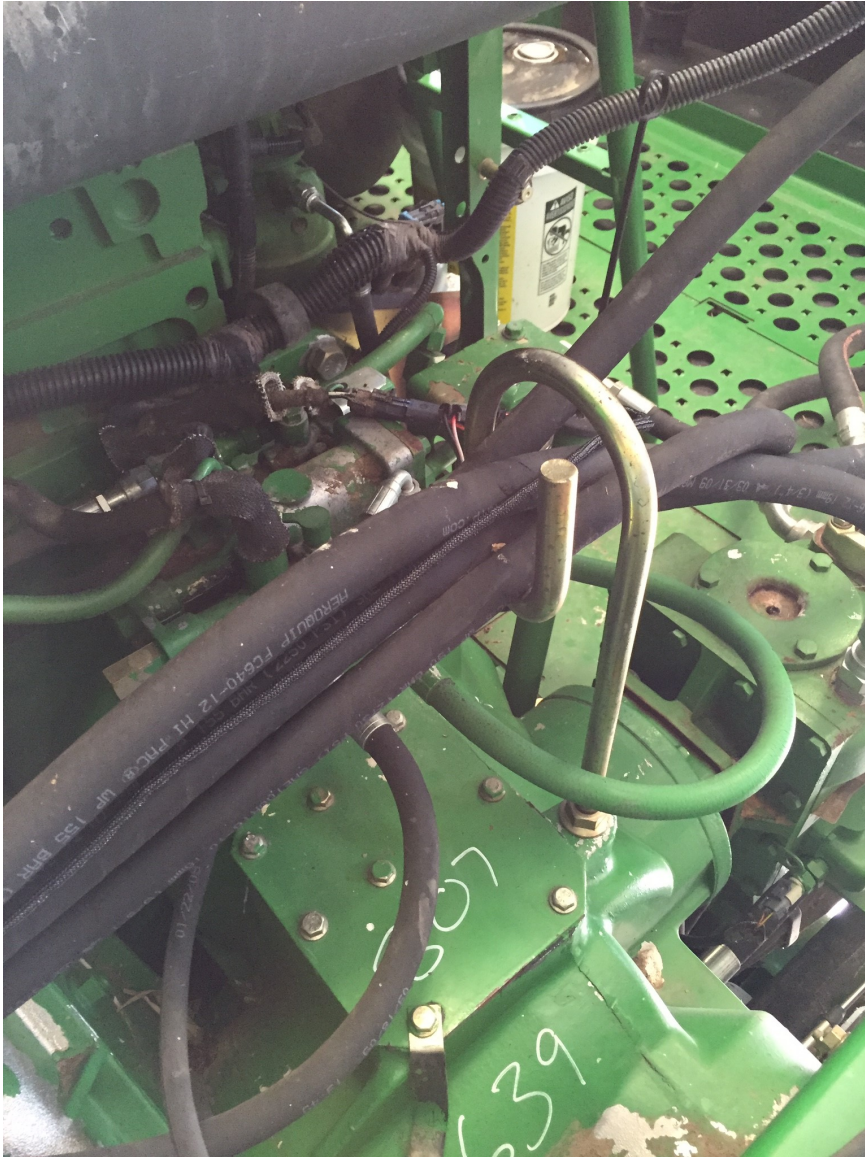
Route wiring harness as shown in the next figures. Secure harness as needed using supplied bag of hardware that came in the wiring bundle and/or the supplied zip ties.

Figure 2.10





## 2. Rear Wiring Harness Installation





## 2. Rear Wiring Harness Installation



Clutch Connector  
Wiring Harness

Cab Extension  
Cable

Power Cable  
Wiring Harness

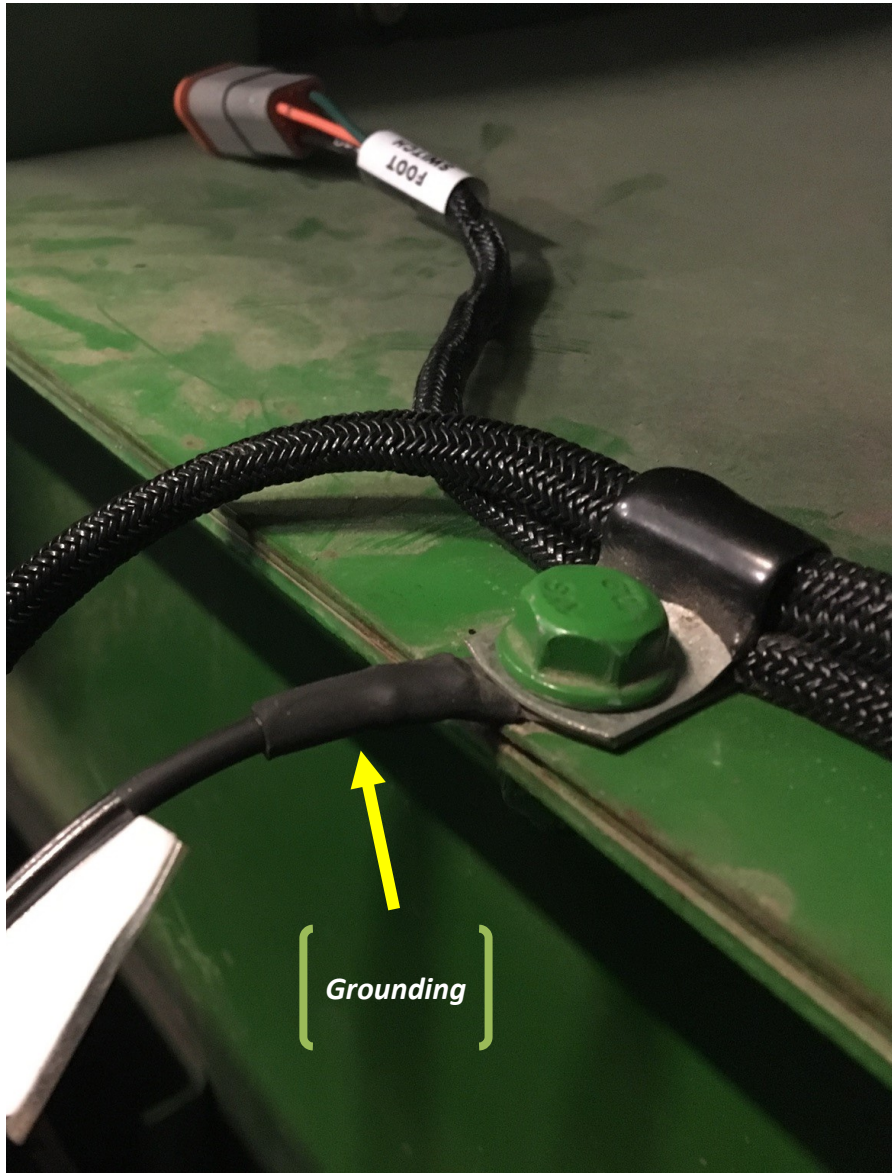


## 2. Rear Wiring Harness Installation





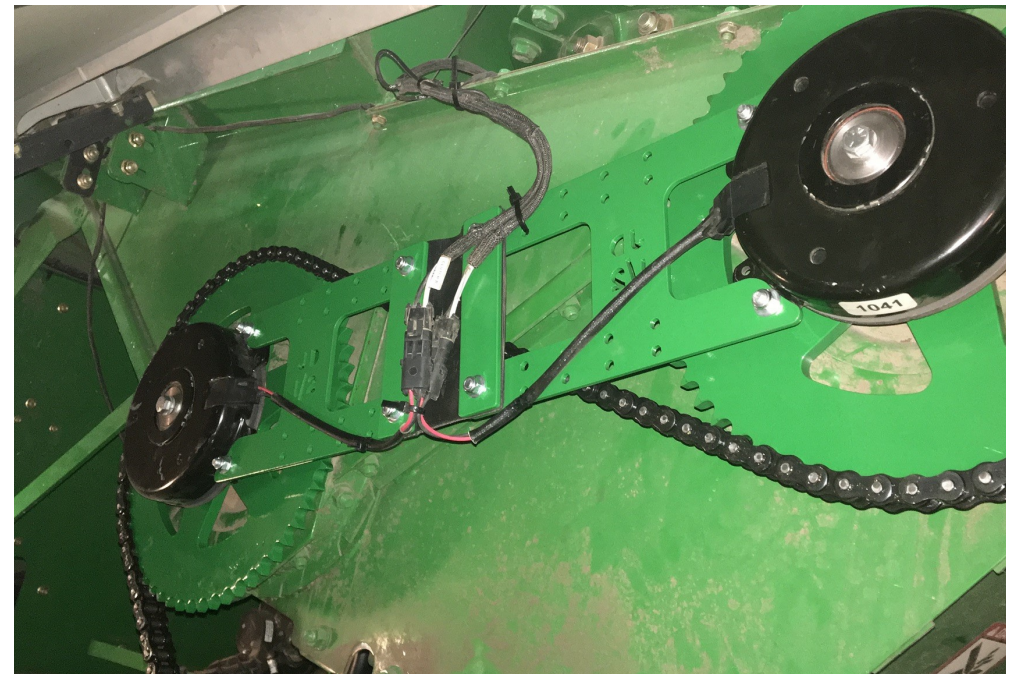
## 2. Rear Wiring Harness Installation



**Figure 2.11**

Refer to Figures 2.11 & 2.12

- 14. Attach grounding cable to frame (ensure a good connection).
- 15. Route the clutch harness to the clutches and plug into the clutch wire leads (LAN5218-251-016).
- 16. Secure harness with zip ties as to avoid any damage.



**Figure 2.12**



### 3. Cab Wiring Harness Installation

Refer to Figures 3.1 & 3.2

1. Retrieve second cab extension wiring harness and connect it to the first as shown.
2. Attach harness where you can to avoid any damage during operation of combine and/or opening and closing of the side shield.



*Figure 3.1*

*Figure 3.2*

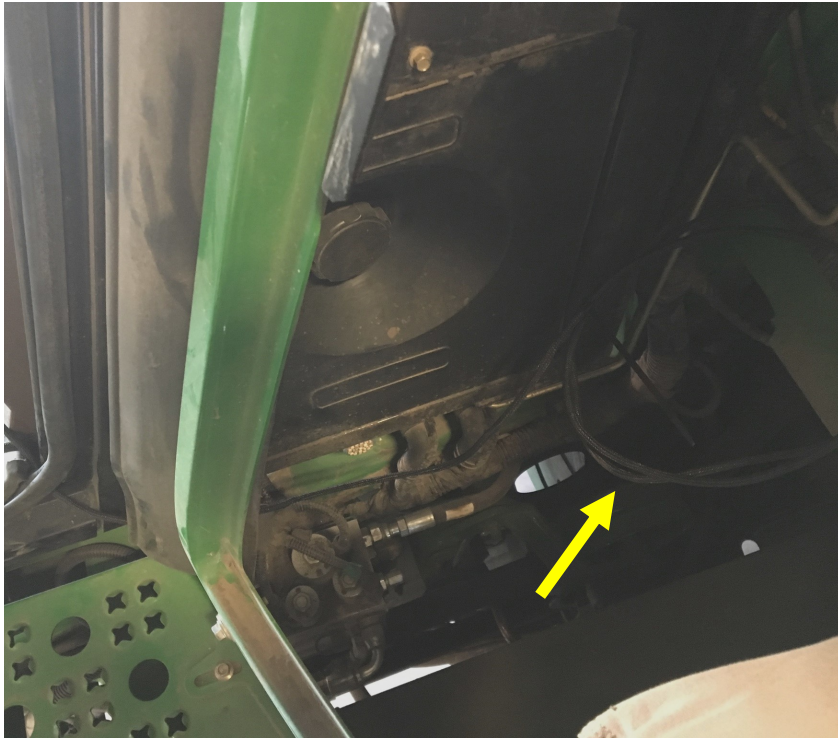




### 3. Cab Wiring Harness Installation

Refer to Figure 3.3 & 3.4

3. Open lower access door just outside of the combine cab door at the top of the ladder landing.
4. Route harness as shown in Figure 3.3. Secure where you can with zip ties.
5. Loop any extra wire here.



*Figure 3.4*

*Figure 3.3*





### 3. Cab Wiring Harness Installation

Refer to Figure 3.5A

6. Run harness through bottom of door frame as shown. Notice harness under door seal.

Refer to Figure 3.5B

7. It is recommended to grind out a small amount of material from the door frame so the harness does not experience a tight bend and rub on the metal over time causing the harness to fail.

*Figure 3.5B*



*Figure 3.5A*





### 3. Cab Wiring Harness Installation

Refer to Figure 3.6

8. Remove cab door bottom threshold cover by removing the three recessed bolts.
9. Pull up floor mat of combine cab just in front of passenger and operator seat. Run harness under floor mat to the far R/H side of the cab.
10. Connect Floor Pedal Harness to the cab extension cord. Place in cab where desired. Route cord as best as possible to avoid congestion with feet and brake pedals.



*Figure 3.7*

*Figure 3.6*



## 4. Door Bracket Installation - 30\*\* Brackets

In some instances the side of the combine may come in contact with the clutches when closed. Replacement door brackets are provided to space the door out an appropriate amount in the front, back, and at the latch area of the door.

Refer To Figures 4.1 & 4.2

1. Open the door and remove the middle door latch and bracket plate.
2. Replace plate with LANUDJD3004 as shown and reattach to combine. Adjust it so that the door still latches properly but does not come into contact with any portion of the clutches.

*Figure 4.1*



*Figure 4.2*





## 4. Door Bracket Installation - 30\*\* Brackets



*Figure 4.3a*



*Figure 4.3b*

Refer To Figures 4.3 - 4.4

3. Remove the rear door catch plate from the combine.
4. Remove the magnetic cup from the door.



*Figure 4.4a*



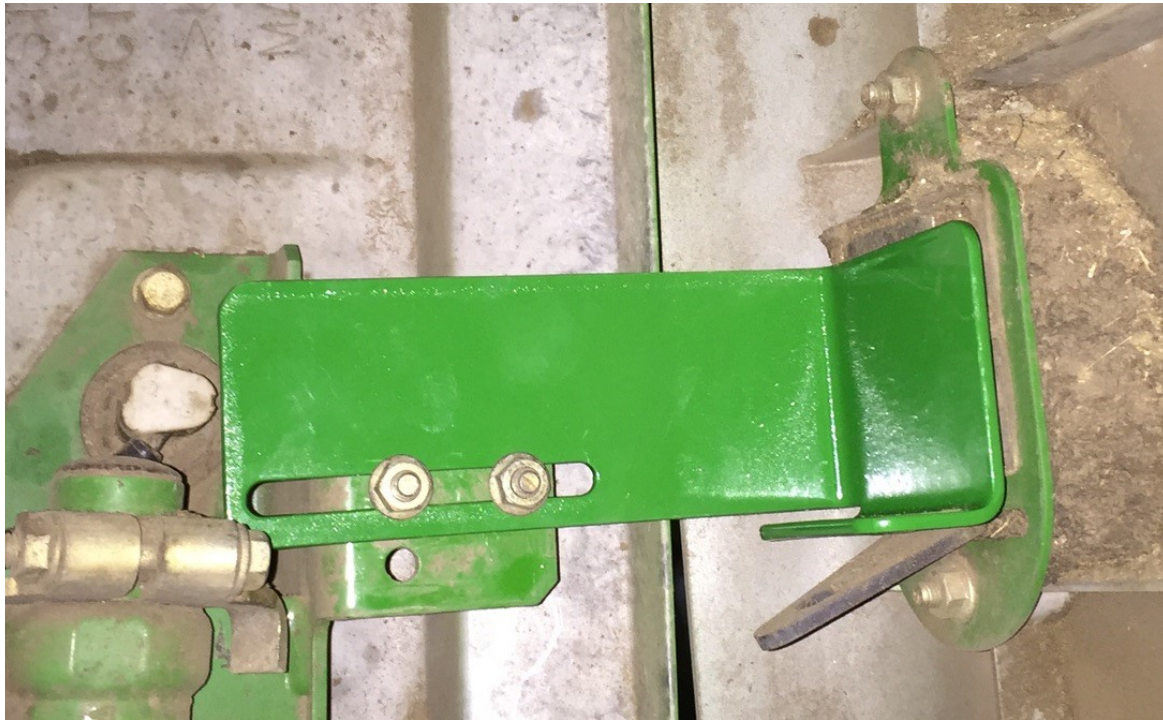
*Figure 4.4b*



## 4. Door Bracket Installation - 30\*\* Brackets

Refer To Figures 4.5

5. Replace rear plate with LANUDJD3006 as shown and reattach to combine. Adjust the plate so that the door rests firmly against it when latched.



*Figure 4.5*

## 4. Door Bracket Installation - 30\*\* Brackets

Refer To Figures 4.6 - 4.8

6. Remove the front door bracket.
7. Replace with LANUDJD3005. Adjust it so that the door rests firmly against it when latched.

*Figure 4.6*



*Figure 4.7*



*Figure 4.8*



## 4. Door Bracket Installation - 40\*\* Brackets

Refer To Figures 4.9 & 4.10

1. Remove the rear door latch spring from the door latch.

*Figure 4.9*



*Figure 4.10*



## 4. Door Bracket Installation - 40\*\* Brackets



*Figure 4.11*

Refer To Figures 4.11 - 4.13

2. Remove the rear door catch plate from the combine and, with existing hardware, replace with LANUDJD4011.
3. Use existing hardware to install the door latch spring on to LANUDJD4011.
4. Adjust accordingly to ensure the door latches properly and does not contact the clutches when latched.

*Figure 4.13*



*Figure 4.12*





## 4. Door Bracket Installation - 40\*\* Brackets



Figure 4.14

Refer To Figures 4.14 - 4.16

5. On the face of the combine platform outside the cab door, measure out and mark two spots drill  $7/16$ " holes. They need to be  $1-1/4$ " up from the bottom side of the platform, spaced  $2-1/2$ " and the first hole should be  $11/16$ " away from the back edge of the platform. **For reference, the LANUDJD4012 bracket will need onto the inside of the platform.**
6. Fasten LANUDJD4012 to the platform using (2)  $3/8$ " x 1" hex bolts (LAN18A00) and (2)  $3/8$ " serrated flange nuts (LAN3718).

Figure 4.15

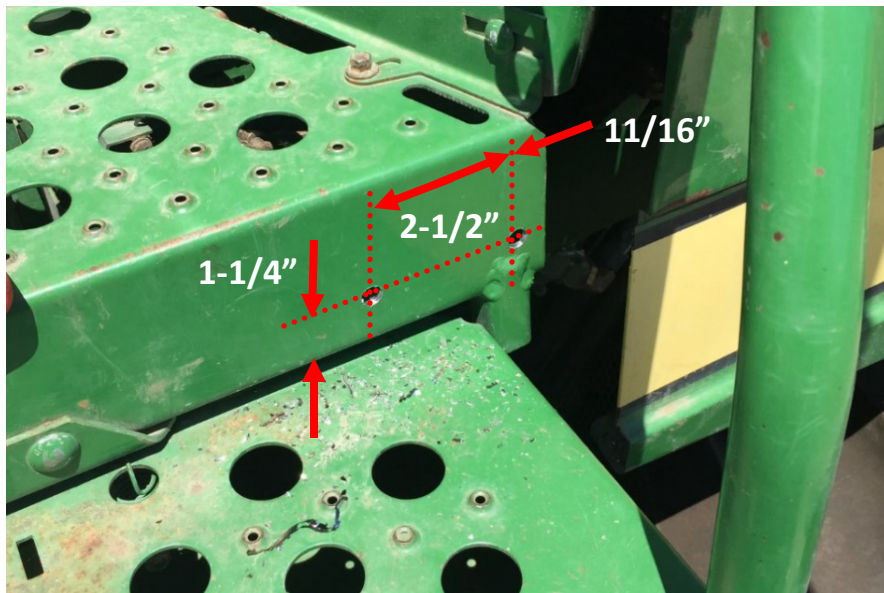


Figure 4.16



## 4. Door Bracket Installation - 40\*\* Brackets

Refer To Figures 4.17 & 4.18

7. Bolt the part number LANUDJD4013 to LANUDJD4011 using two 3/8" x 3/4" carriage head bolts (LANFK303) and two 3/8" serrated flange nuts (LAN3718).
8. Cut a piece of rubber molding (CABAS1536) and put it over the edge of the LANUDJD4013 that will contact the door. Adjust the bracket so that the door rests firmly against it when latched.

*Figure 4.17*



*Figure 4.18*





## 4. Door Bracket Installation - 40\*\* Brackets

Refer To Figure 4.19

9. At the rear of the door, on the stationary panel, remove and save the bolt that holds the strut to the bottom of the panel.
10. Install the LANUDJD4010 bracket using one of the provided 3/8"-16 x 1" hex head bolts (LAN18A00). Re-install the bolt removed in the previous step, making sure it holds on the strut and goes through the slot in the LANUDJD4010.  
**NOTE:** If there is no hole for the top bolt, drill a 7/16" diameter hole 2" directly above the bolt removed in step 9.
11. Cut a piece of rubber molding (CABAS1536) and put it over the edge of the LANUDJD4010 that will contact the door. Adjust the bracket so that the door rests firmly against it when latched.

Figure 4.19



FOOT SWITCH Y721					
PIN	CIR #	LABEL	COLOR	GA	TYPE
A	001	GROUND	BLK	18	TXL
B	725	AUX SWITCH	DK GRN	18	TXL
C	719	12V ENABLE	ORG	18	TXL

RELAY ASSM Y722					
PIN	CIR #	LABEL	COLOR	GA	TYPE
A	001	GROUND	BLK	18	TXL
B	725	AUX SWITCH	DK GRN	18	TXL
C	719	12V ENABLE	ORG	18	TXL



- 2 TXL WIRE INSULATION MAY NOT EXCEED 0.078" (2MM) DIA.
- 1 LABEL EACH CONNECTOR WITH PART ID AND NAME

ID LABEL	
OWNER	HEADSIGHT, INC
ITEM	SEE SHEET PART NUMBER
REVISION	SEE SHEET REV #
DATE	BUILD DATE
MFG	SUPPLIER NAME

#### COMPONENT DATA

ITEM	PART ID	QTY	DESCRIPTION	MFG	MFG P/N	TERMINAL P/N	ACCESSORY P/N	ACCESSORY P/N
1								
2	Y721	1	CONN, 3p PLUG	DEUTSCH	DT06-3S	0462-201-16141		WSS
3	Y722	1	CONN, 3p RCPT	DEUTSCH	DT04-3P	0460-202-16141		WSP
4								
5								
6								
7								
8								
9								
10								

NOTES:  
 FOOT SWITCH EXTENSION  
 1 NEEDED FOR 9x70--S  
 2 NEEDED FOR 9x00-9x50

REVISIONS			
REV	DESCRIPTION	DATE	APPROVED
1	CREATED PART	12.2.16	JHK
2	CORRECTED BLACK-A, ORG-C	01.04.17	JHK



DRAWN 1/4/2017  
 DRAWN BY: JHK

FILE NAME

HT9260-FS  
 CABLE LAYOUT

PART NUMBER  
 HT9260-FS

SCALE NOT TO SCALE

REV 2  
 SHEET 01





NOTES:

REVISIONS

REV	DESCRIPTION	DATE	APPROVED



DRAWN 1/4/2017

DRAWN BY: JHK

FILE NAME

HT9260-FS R2  
WIRING SCHEMATIC

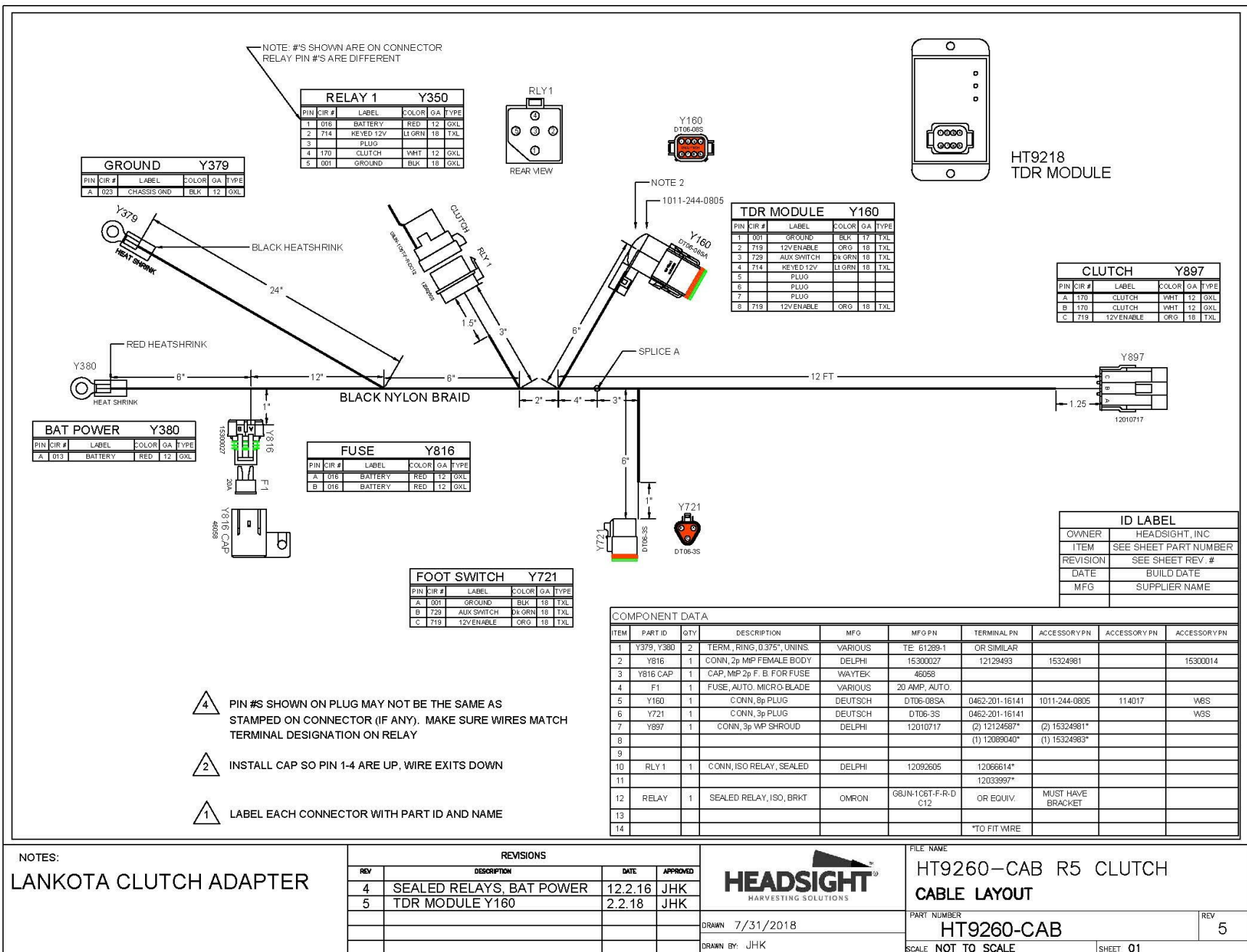
PART NUMBER

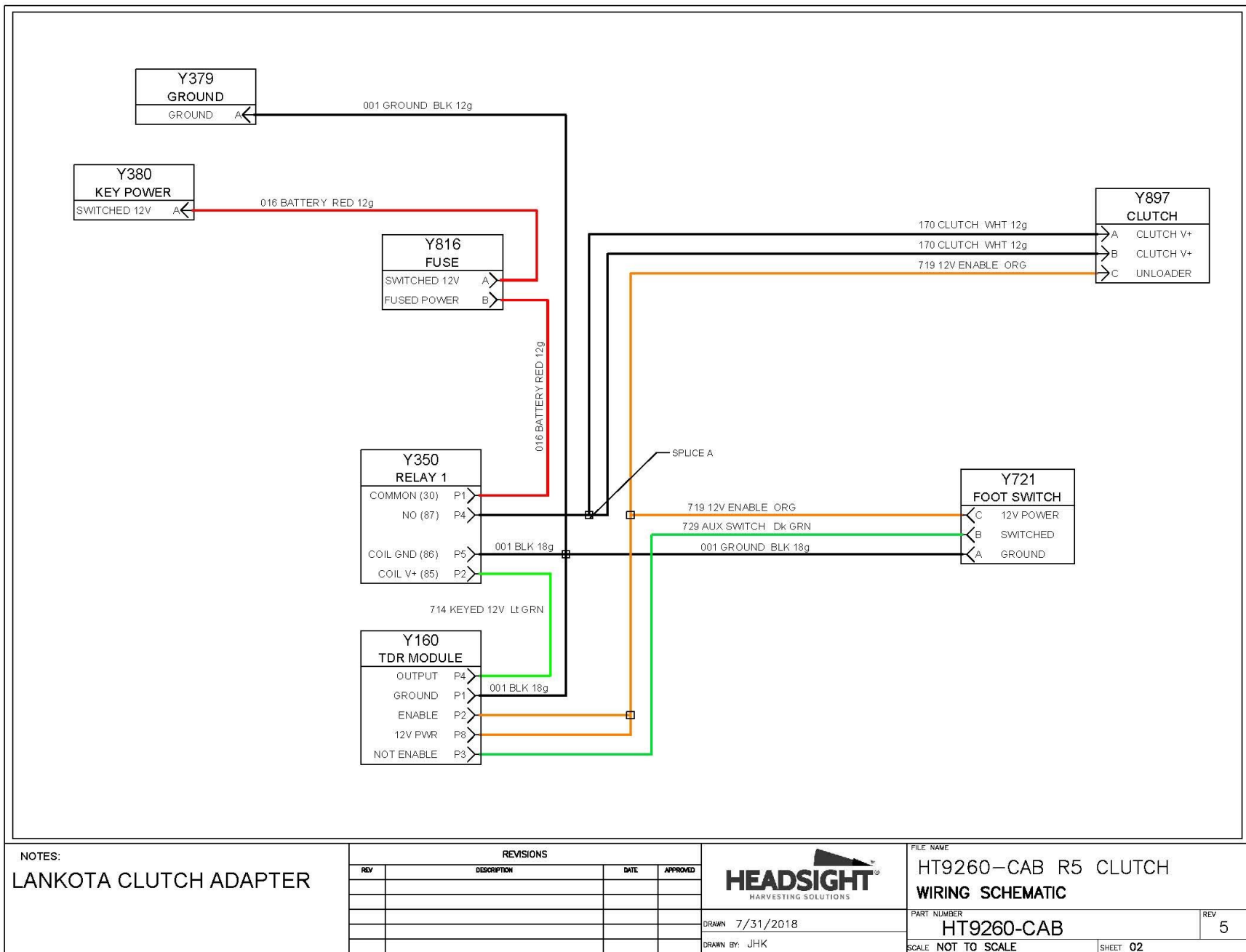
HT9260-FS

REV  
2

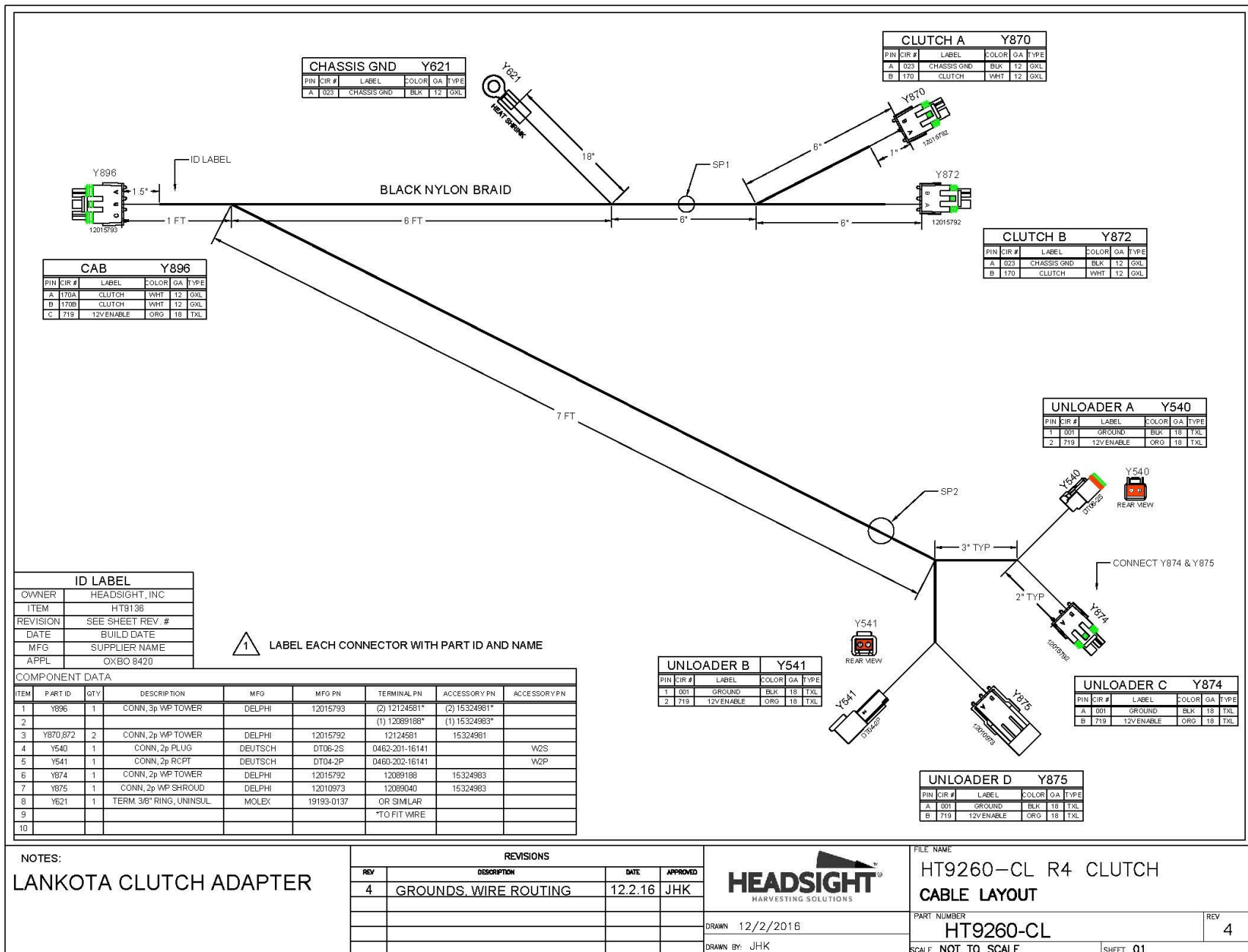
SCALE NOT TO SCALE

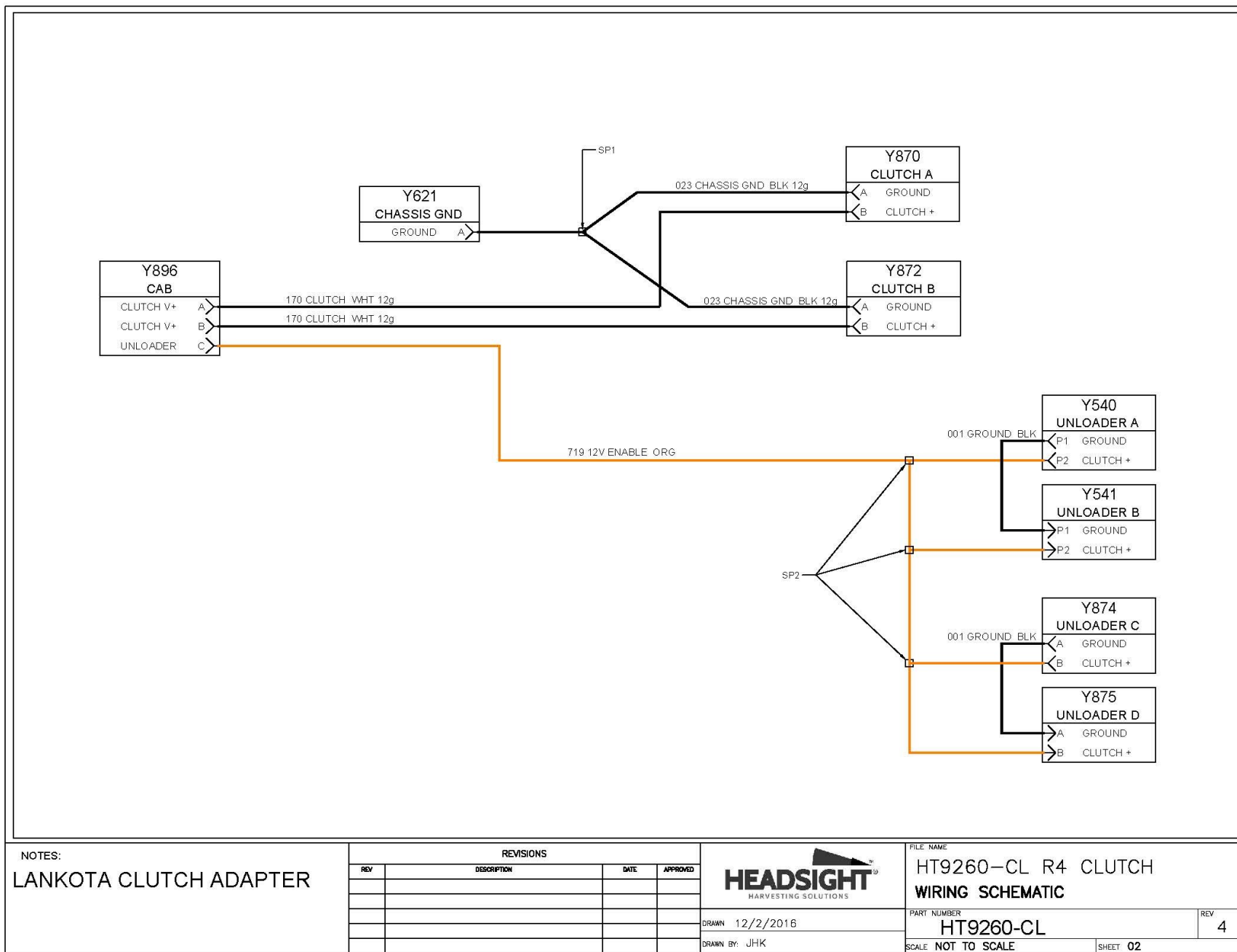
SHEET 02











NOTES:

LANKOTA CLUTCH ADAPTER

REVISIONS

REV	DESCRIPTION	DATE	APPROVED



DRAWN 12/2/2016

DRAWN BY: JHK

FILE NAME

HT9260-CL R4 CLUTCH  
WIRING SCHEMATIC

PART NUMBER

HT9260-CL

REV

4

SCALE NOT TO SCALE

SHEET 02

## Finishing Up

1. Make one final check to complete wiring harness to ensure there are no points in the harness that will come in contact with anything that may damage the harness during combine operation and/or L/H main access door opening and closing.
2. Do a final check of all nuts, bolts etc. installed to make sure they are all tight and secure.

## Test Run

Test run the system. The unloading auger system should work exactly the same as it did before you installed this kit except when the foot switch is engaged the two grain tank cross augers will stop turning allowing the unloading auger to empty out roughly 85 - 90%. As soon as pressure is released from the foot switch, the augers will reengage. This means that anytime you want the cross augers not to turn, you must have your foot on the foot switch.

**The initial burnish process of the clutches contained in this kit has been performed by Lankota prior to shipment. Seasonal reburnishing of the clutches at the beginning of every harvest season will greatly increase the life of your clutch system.**

**To burnish the clutches:**

1. Swing out the auger.
2. Start the unloading auger.
3. Run combine on high idle.
4. Press and release the foot switch 5-10 times.