

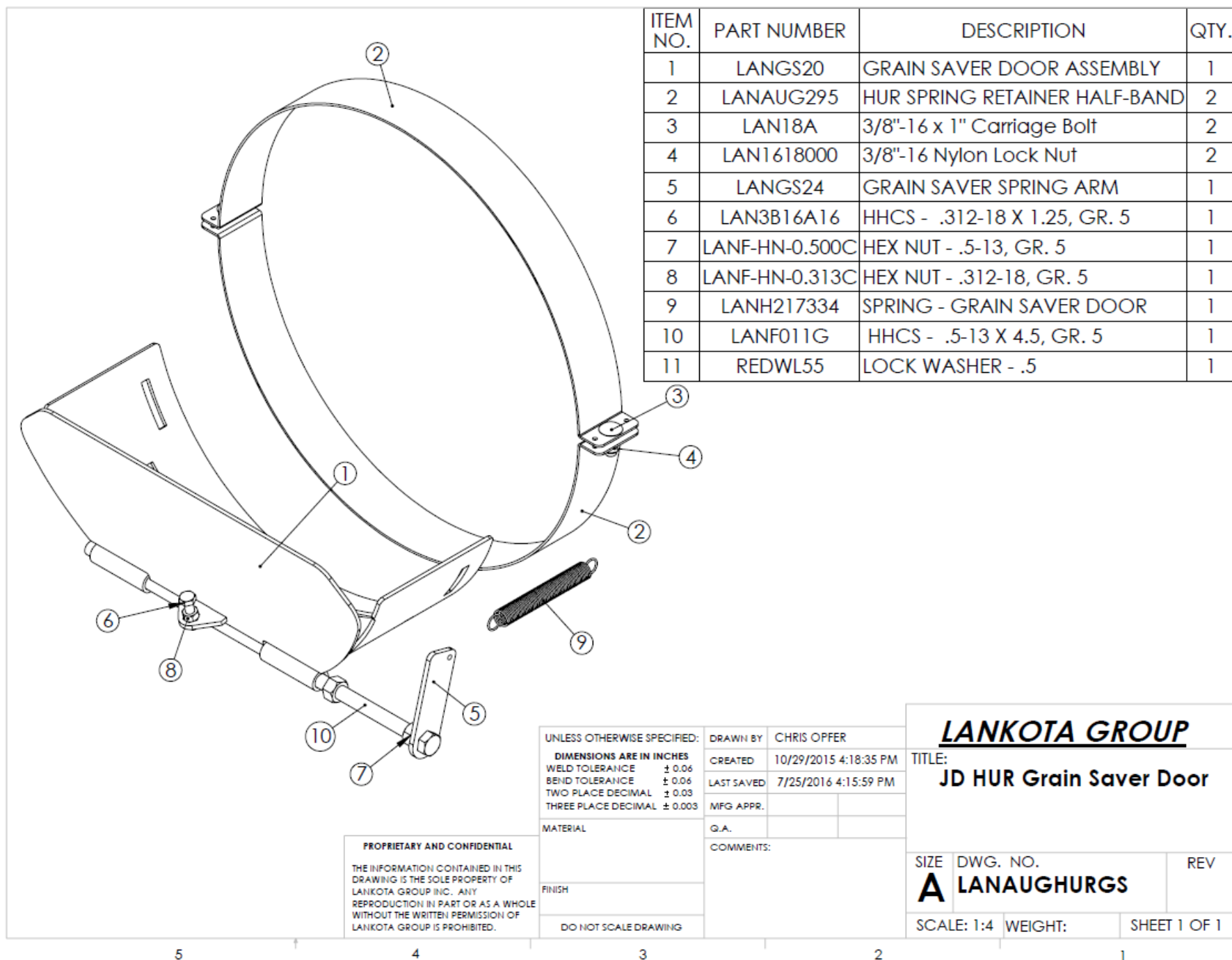
# **LANAUGHURGS**

## **Installation Instructions**

Lankota Grain Saver Door for High Unload Rate John Deere Combines

# **LANKOTA<sup>®</sup>**

**270 West Park Avenue  
Huron, SD 57350  
866-526-5682**



# Numerical Parts List

Part Numbers	Description	Quantity
LANGS20	Grain Saver Door Weldment	1
LANAUG295	HUR Spring Retainer Half-Band	2
LANGS24	Grain Saver Spring Arm	1
LANH217334	Spring - Grain Saver Door	1
<b>LANAUGHURGSBH</b>	<b>Bags of Hardware</b>	<b>1</b>
Each Bag Includes:		
LAN18A	3/8"-16 X 1" Carriage Bolt	2
LAN1618000	3/8"-16 Nylon Lock Nut	2
LAN3B16A16	5/16"-18 x 1.25", Gr. 5 Hex Head Cap Screw	1
LANF-HN-0.313C	5/16"-18 Gr. 5 Hex Nut	1
LANF011G	1/2"-13 X 4.50", Gr. 5 Hex Head Cap Screw	1
LANF-HN-0.500C	1/2"-13, Gr. 5 Hex Nut	1
REDWL55	1/2" Lock Washer	1

**NOTE:** One extra spring is included for replacement if necessary

## Pictorial Parts List

					
LANGS20 (1)	LANAUG295 (2)	LANGS24 (1)	LAN217334 (1)	LAN18A (2)	LAN1618000 (2)
					
LANF011G (1)	LANF-HN-0.500C (1)	LAN3B16A16 (1)	LANF-HN-0.313C (1)	REDWL55	

# Installation

Refer to Figure 1

1. Remove the plastic spout and factory grain saver door from the existing auger tube.
2. Retain all hardware for re-use later in the installation

Figure 1



# Installation

Refer to Figure 2 & 3

3. Install the Grain Saver Weldment (LANAUGHURGS) onto the end of the auger tube as shown below using existing hardware. The two bolts toward the end of the auger should be tightened while four others remain loose for spout installation.
4. Install the stop bolt (LAN3B16A16) and jam nut (LANF-HN-0.313C) into the weld nut on the outside of the grain saver door. This acts as a stop to keep the door from opening up too far.
5. Install the plastic spout and snug up all bolts.

Figure 2

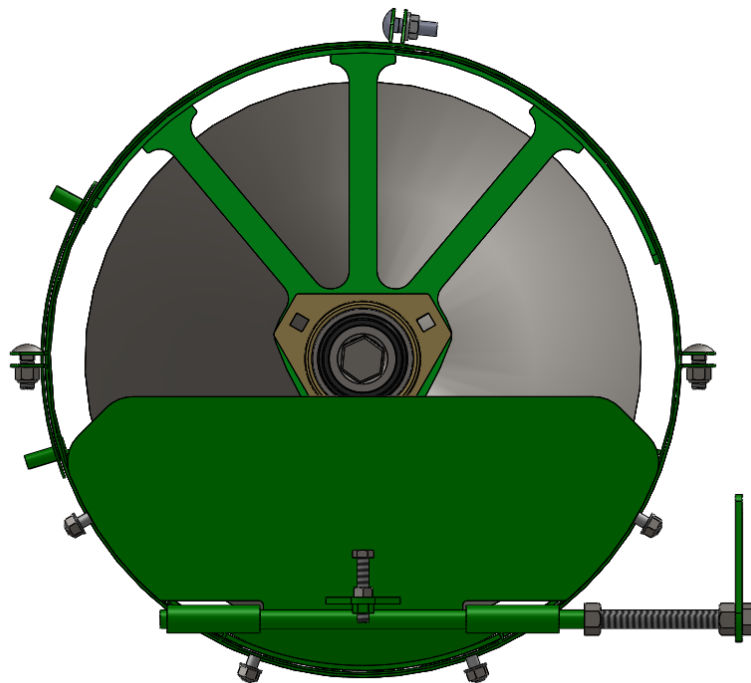
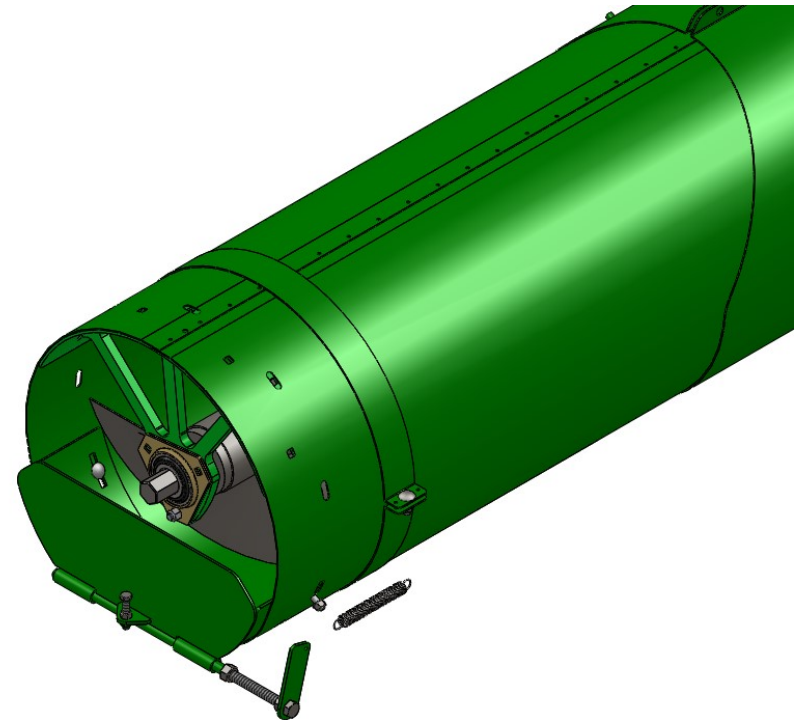


Figure 3





# Installation

Refer to Figures 4 & 5

6. On the side of the grain saver door with the weld nut, draw a vertical line 5" from the end of the spout. (Figure 4).
7. Along the line, measure up 2 - 5/8" from the contour line (shown in RED in Figure 5) of the spout and make a mark.
8. Drill a 5/8" hole in the spout where the two lines cross and install the grain saver spring arm.

Figure 4



Figure 5



# Installation

Refer to Figures 6 & 7

9. The drilled hole should line up with the nut welded to the grain saver door. Using the REDWL55, LANF-HN-0.500C and LANF011G install the grain saver door arm (LANGS24).
10. A good starting point for the band is 3" behind the plastic spout (Figure 6).
11. Adjust LANGS24 (grain saver spring arm) so the spring length when installed is roughly 9" (the grain saver spring arm should tilt back 10-15 degrees - see Figure 7). Tighten all fasteners for operation.

Figure 6



Figure 7

