

LANTH910

Installation Instructions

Telescoping and Swiveling Three-Position Combine Header Trailer Hitch for JD® 70 & “S” Series Combines

LANKOTA®

**270 West Park Avenue
Huron, SD 57350
866-526-5682**

Numerical Parts List (Pre-Assembled)

These items are PRE-ASSEMBLED as part of the Telescope & Latch Assembly (LANTH1714A) prior to shipment from Lankota's warehouse. You will not use these items in the following steps.

Part Numbers	Description	Qty
LANTH1370W	Telescope Tube Weldment	1
LANTH1693W	Latch Weldment	1
LANTH1408	Torsion Spring	1
LANFB832	3/4" x 8" Gr 5 Hex Bolt	1
LANFNAC8	3/4" Center Lock Nut	1
REDWS58	3/4" SAE Flat Washer	2
RED21940	7/16" x 2" Lynch Pin	1
LAN45511	1/16" Plastic Coated Cable	12 in
LAN43401	3/32" Cable Clamp	2
LANSTICKER	Lankota Sticker	1
LANTHSTICKER	Hitch Warning Sticker	1

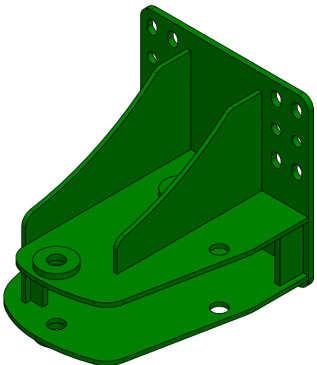

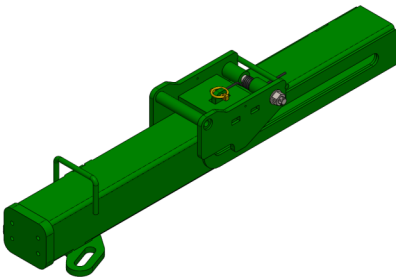
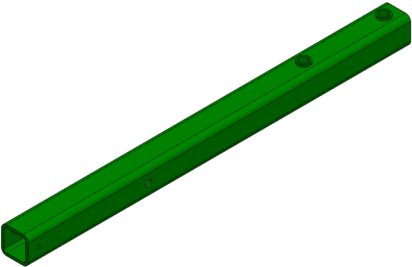


Numerical Parts List

Part Numbers	Description	Qty
LANTH1196W	Swivel Tube Weldment	1
LANTH1262W	Axle Base Weldment	1
LANTH1714A	Telescope & Latch Assembly	1
LANTH910BH	Box of Hardware	1
LAN20180	M20 x 190mm Hex Bolt	6
LANFH599K	M20 Flange Center Lock Nut	6
LANFHGCF9	M20 Extra Thick Flat Washer	6
LANHH80200	1-1/4" Lockease Hitch Pin	1
LANHW8223	1.25" x 7.75" Pivot Pin	1
LANFB036	1" x 9" Gr 5 Hex Bolt	1
LANFHHN1N	1" Center Lock Nut	1
RED21192	Bushing	2
LANFOI8B	1/4" x 2.5" Slotted Spring Pin	2

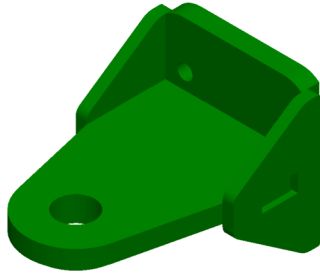
Optional Parts List

Part Numbers	Description	Qty
LANTH1451W	Bolt-on Clevis Hitch Weldment	1
LANF2II7	1/2" x 2" Gr 8 Hex Bolt	4
REDWL55	1/2" Lock Washer	4
LANFWS55	1/2" SAE Washer	4
or		
LAN10040	15 Ton Bolt-on Pintle Hitch Kit	1
LANFC506	1/2" x 1.5" Gr 8 Hex Bolt	4

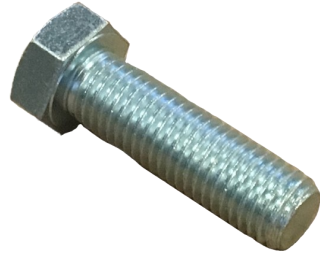
Pictorial Parts List

			
LANTH1262W (1)	LAN20180 (6)	LANFH599K (6)	LANFHGCF9 (6)
			
LANTH1714A (1)	LANTH1196W (1)	LANHH80200 (1)	LANHW8223 (1)
			
LANFB036 (1)	LANFH1N1N (1)	RED21192 (2)	LANF0I8B (2)

Optional Pictorial Parts List



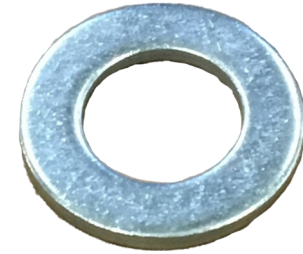
LANTH1451W (1)



LANF2II7 (4)

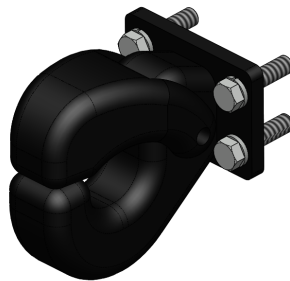


REDWL55 (4)



LANFWS55 (4)

[OR]



LAN10040 (1)



LANF506 (4)

Preparation

1. Park combine on hard, level surface.
2. Steer the rear wheels to the left and raise the straw spreader to provide more space for installing this hitch.
3. Set the parking brake on the combine.
4. Turn off the combine engine and remove the key.

Kit Installation

Refer to Figure 1

1. Using a sufficient tonnage bottle jack and wood blocks, position the jack under the left hand designated jacking location under the rear axle and raise until the wheel can be rotated.
2. Remove the three factory axle bolts and nuts. The other two factory bolts located near the end of the axle frame should remain in place as shown.

Figure 1



Kit Installation

Refer to Figure 2

Note: To aid in ease of installation, it would be helpful to use the long pallet the hitch was shipped on to raise and hold the Axle Base Weldment (LANTH1262W) in position.

3. Raise Axle Base Weldment (LANTH1262W) into place and align holes in the hitch mounting plate with six holes in the axle frame. It may be necessary to use a line-up pry bar and/or manipulate the bottle jack up/down to line up all of the axle holes.

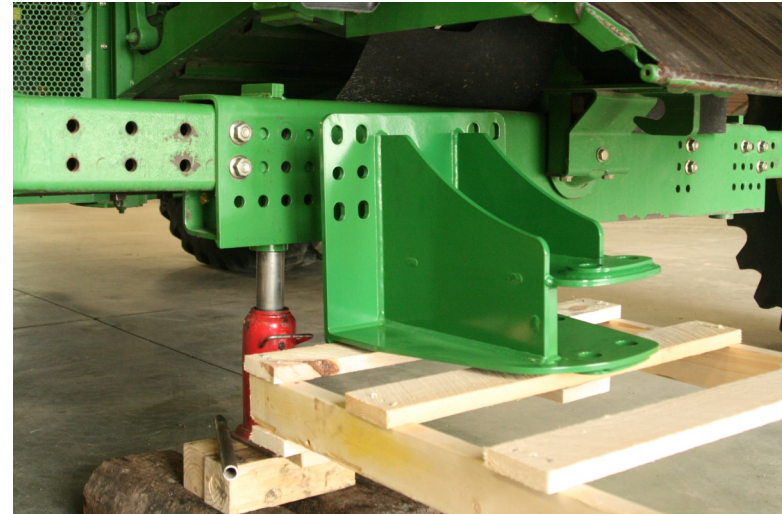


Figure 2

Refer to Figure 3

4. Install six M20 x 190mm bolts (LAN20180) as shown in Figure 3. Insert the bolts through from the rear of the axle frontward using one M20 extra thick flat washer (LANFHGCF9) under each bolt head. Install one M20 flange center lock nut (LANFH599K) per bolt on the other side. Tighten all hardware.

Special Notes:

- 4.1 *On Rear Wheel Drive (RWD) models, it will be necessary to install the two upper and two lower bolts from the front of the axle rearward to allow clearance for the hydraulic shield covers to be re-installed. Re-use the three factory flange head nuts to secure the covers in place.*
- 4.2 *On non-RWD models with Auto-Trac (steering angle sensor) wiring harness toward the rear wheel, install all supplied hardware as instructed in step 4. Re-use the three factory flange head nuts to secure the wiring harness shield covers in place.*



Figure 3

Kit Installation



Figure 4

Refer to Figure 4

5. Lower combine to the ground. Remove the bottle jack and all tools.
6. Install Swivel Tube Weldment (LANTH1196W) into the Axle Base Weldment (LANTH1262W) as shown in Figure 4. The raised lips of the tube bushings should be facing upward. Use the 1-1/4" Lockase Pin (LANHH80200) to temporarily position and hold the tube into place.

Refer to Figure 5

7. Pre-install one slotted spring pin (LANF018B) through one end of the 1-1/4" pivot pin (LANHW8223). Insert the pivot pin through the axle base weldment and swivel tube weldment from the top.
8. Install the second slotted spring pin through the other end of the pivot pin.

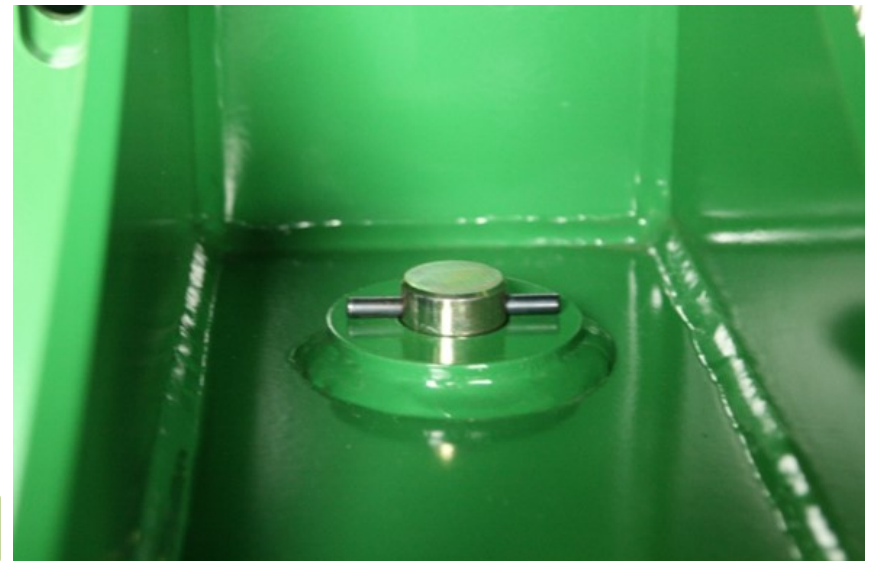


Figure 5

Kit Installation

Refer to Figures 6 - 8

7. Insert Telescoping & Latch Assembly (LANTH1714A) partially into the Swivel Tube Weldment (LANTH1196W) as shown in Figure 6.
8. Insert 1" x 9" bolt (LANFB036) through the slots of telescope & latch assembly and the holes of swivel tube weldment from one side with one bushing (RED21192) as shown in Figure 7.
9. Install the second bushing (RED21192) on the other side of tube and secure with 1" center lock nut (LANFH1N) as shown in Figure 8. Tighten the hardware completely.



Figure 6



Figure 7



Figure 8

Kit Installation

Refer to Figure 9

10. Remove the lynch pin from the telescope & latch assembly and collapse the telescope tube completely to latch-in. Re-install the lynch pin to lock the latch for secure road transportation.



Figure 9

For further technical assistance,

Call Lankota Inc. at:

1-866-526-5682

Kit Installation

Note: If the tube weldment (LANTH1714A) does not ship with the appropriate hitch bolted on, follow these steps.

Refer to Figure 10

11. Ensure the threaded holes are clear of any debris by blowing them out with compressed air.

Refer to Figure 11 (For Clevis Hitch)

12. Bolt on the clevis hitch weldment (LANTH1451W) with the provided 1/2" x 2" bolts, lock washers and flat washers.

Refer to Figure 12 (For Pintle Hitch)

13. Bolt on the pintle hitch with the hardware included in the kit and the 1/2" x 1.5" Bolts.



Figure 10

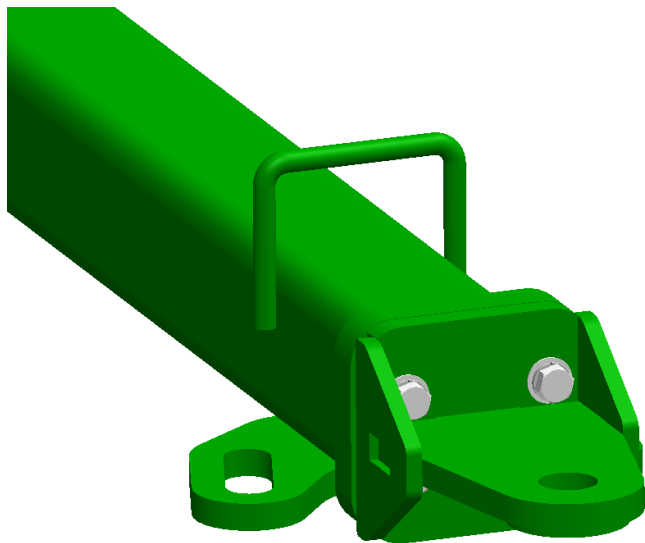


Figure 11

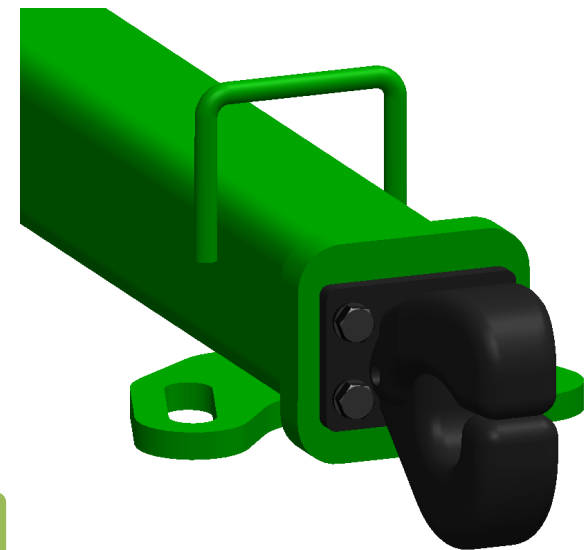
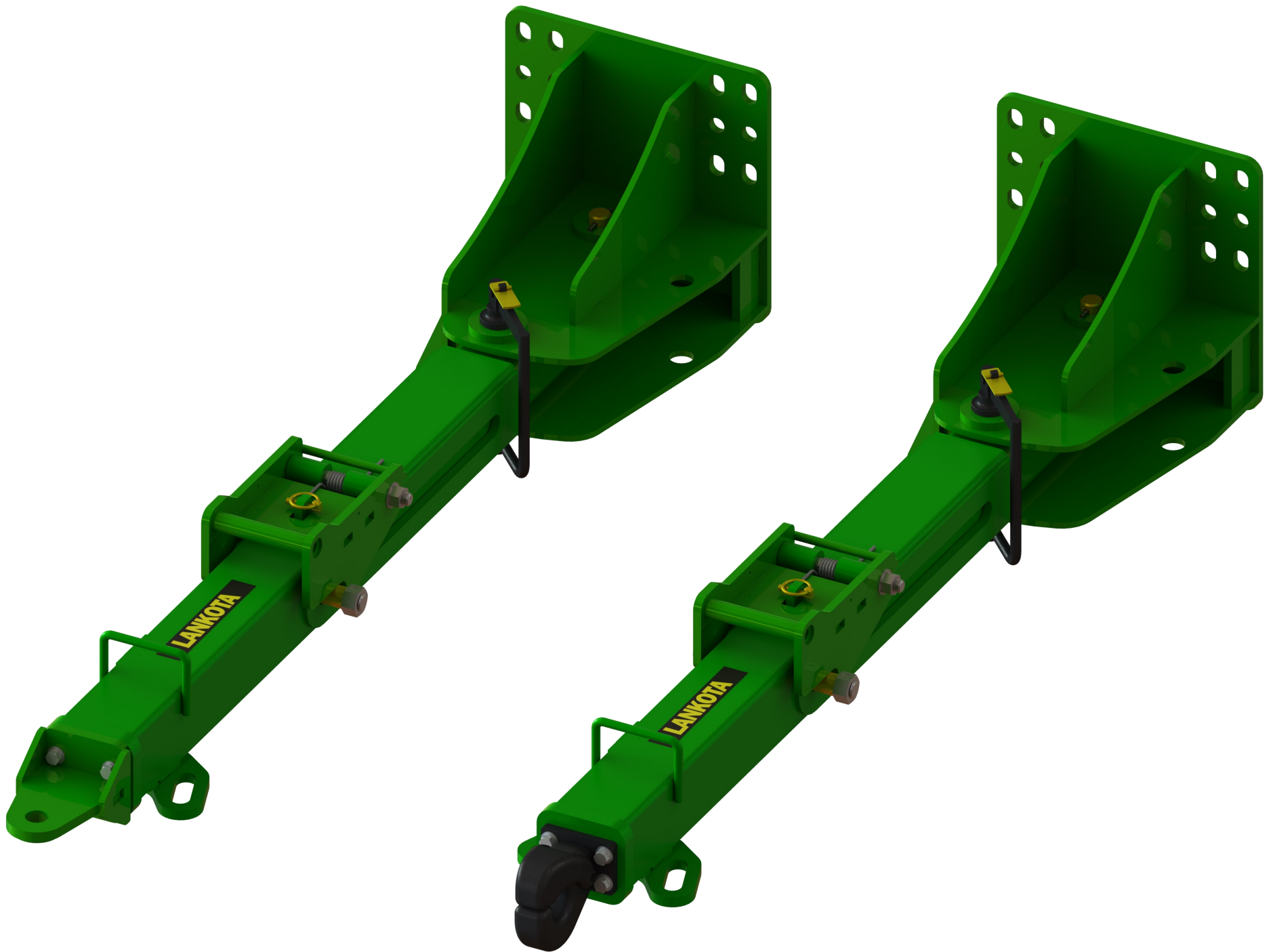


Figure 12



LANTH910 User's Manual

This TH620 hitch offers two positions: Tow Position and Storage Position. Use the 1-1/4" Lockase pin to secure the swivel tube weldment in the desired position.

- ◆ The tow position can be used for offset towing to improve trailer visibility to the operator. This position can also be used to prevent the trailer from going too far into a ditch under certain road conditions.
- ◆ The storage position can be used to provide improved ground clearance while operating combine in the field, ease of loading combine onto a trailer or when dropping a windrow for baling.

Left Hand Tow Position



Storage Position



LANTH910 User's Manual

To use the telescope function of this hitch:

- ◆ Remove the lynch pin to unlock the latch. Lift the latch handle with one hand and grab the fixed handle with the other hand. Pull the telescope tube outward as far as necessary to line up with the trailer drawbar.
- ◆ Perform all proper secure trailer connections to the hitch.
- ◆ **IMPORTANT:** In order for the telescope tube to close properly, the rear wheels MUST BE PARALLEL to the telescope tube. Otherwise the tubes may bind under load and not close properly.
- ◆ Back-up the combine SLOWLY until the telescope tube is fully closed and latched in.
- ◆ Re-install the lynch pin to lock the latch for secure road transportation.

