

LAN PSP100K

Installation Instructions

John Deere 90 Series Poly Corn Head Snout Protectors

Fits 90 Series Corn Heads up to Serial Number 695300
(use LANPSP200K for corn heads above Serial Number 695300)



270 West Park Avenue

Huron, SD 57350

866-526-5682

Numerical Parts List

<i>Part Numbers</i>	<i>Description</i>	<i>Quantity</i>
LANPSP101L	Poly Snout Protector – Left Side	12
LANPSP101R	Poly Snout Protector – Right Side	2
LAN030114048*	3/4 " Phillips Pan Head Screw	18
LAN001AB18A32*	3/8" x 1/2" Pan Head Bolt	2
LAN3718*	3/8" Serrated Lock Nut	2

**included in bag of hardware.*

Pictorial Parts List



LAN PSP101L



LAN PSP101R



LAN 030114048 (18)*



LAN 001AB18A32 (2)*



LAN 3718 (2)*

Preparation

Completely remove corn hood and corn snout assembly from head and tip on one side.

1. Installation

Refer to Figure 1

- 1.1 Remove bolt that hinges on corn snout and hood assembly (see large yellow arrow.)
- 1.2 Fit Stainless Steel Plate (LANPSP101L or LANPSP101R) into position as shown in Figure 1.
- 1.3 Reinstall hinge bolt and do not tighten.
- 1.4 Clamp wear plate into position and assure proper fit.
- 1.5 Once desired fit is found, attach wear plate on bottom side of snout first, using screws (LAN030114048) see small yellow arrows.
- 1.6 Install screws from back to front and finish attaching wear strip on top side of snout, see red arrows.

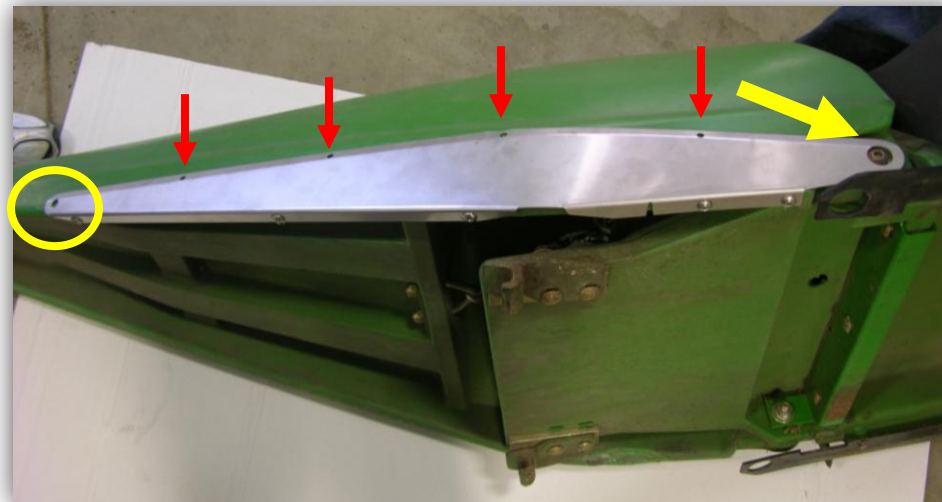


Figure 1

For further technical information you may contact:

Lankota Inc.

1-866-526-5682