

**Lankota, INC.**

**LAN – HR100**

**Hanger Bearing Kit**

**Installation Instructions**

**LAN – HR100**  
**Parts break down list**

	 <p>LAN - 103</p>	
 <p>LAN - 105</p>	 <p>207KRRB12</p>	 <p>* LAN - 3718</p>
 <p>*LAN – 18A</p>	 <p>LAN – HR100SPR</p>	 <p>LAN - HRABR</p>
 <p>LAN - HRABL</p>	 <p>*LAN – 1818A</p>	 <p>*LAN – 18A32</p>

**\* Items are included in bag of hardware**  
 John Deere and JD are registered trademarks of Deere & Company

**For further information you may contact:**

**Lankota Inc.**  
**(866) 526-5682**

## LAN – HR100 BOLT – ON HANGER BEARING KIT

### Preparation

1. Remove chain sprockets, protective tube, and clutch assemblies from left and right jackshafts on head.
2. Attach header to combine.
3. Lock header safety bar into proper position.

### Procedure

1. Hold desired drive line to be used up to feeder house drive. Hold locking pins in collar in line with the groove in the feeder house drive shaft. Extend the drive line half way only with feeder house frame in the “level” position. This will allow for even travel of the drive shaft during header tilt. Mark shaft on header at this point.
2. Cut header shaft on mark. A chop saw clamped onto shaft works well. This eliminates need to remove shaft from header.
3. Assemble hanger bearing supports. Place Bearing (**LAN – 207KRRB12**) between two Flanges (**LAN – 105**) and attach to Support (**LAN – 104**) using three Bolts (**LAN – 18A**) and three Nuts (**LAN – 3718**). **Always bolt Hex Bearing (LAN-207KRRB12) to feeder house side of Hangar Bearing Support (LAN- 104) so bearing removal or replacement is possible if needed. (See Figure 1)**
4. Slide Bearing Support Assembly on header jackshaft.

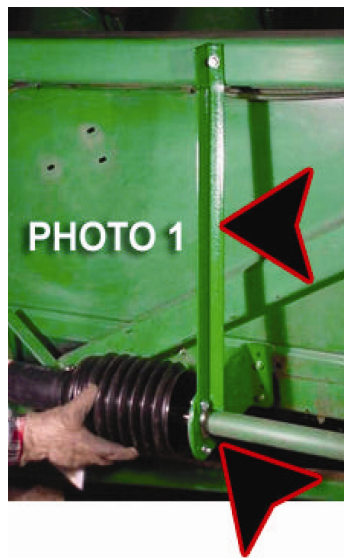


**Figure 1**

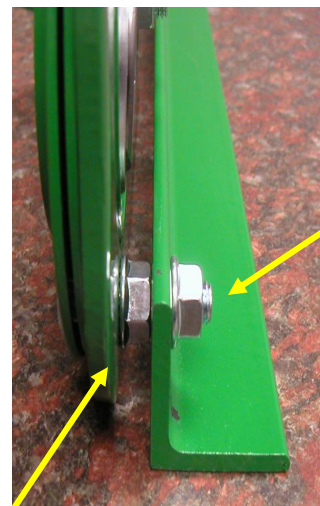
1. Install hanger bearing as close to where driveshaft will connect to jackshaft as possible. 3 inches of jackshaft protruding out from bearing is ideal.
2. Measure and cut length needed for reinstalling protective tube on jackshaft.
3. Reinstall tube, hanger bearing, and driveshaft. Check all components for proper fit. If there is no predrilled holes to attach mount, after bearing mount is positioned as needed, mark back of header through the two 3/8" holes in bearing mount. Drill out marks with a 3/8" drill bit. Secure to header by running two 3/8" bolts (not provided in kit) through front of header out the back. Use large area washers (not provided in kit) under bolt heads to avoid sheet metal cracks. Tighten down using locking nuts (not provided in kit) on back side of header.

### Installation of Hanger Bearing Support

1. After bearing mount is positioned, install Angle Support (**LAN-HRABR**) to right side of head and (**LAN-HRABL**) to the left side of head. Attach bottom of angle support to outside of bearing mount using the bearing flange hole closest to the back side of the head. Secure support to mount with longer Carriage Bolt (**LAN-18A32**) and Lock Nut (**LAN – 3718**) between bearing support and hanger support to avoid support contact with bearing and seal. Install second Lock Nut (**LAN – 3718**) to secure support iron on Carriage Bolt (**LAN-18A32**). **See Figure 3A**. Tighten nuts finger tight only. Position support vertically to top frame beam. Mark on beam through hole in support. Remove support from header. Using a 5/16" drill bit, drill a hole at mark made in top frame beam. Attach support to top beam using one Thread Cutting Bolt (**LAN-1818A**). Tighten only enough to avoid stripping threads. Attach bottom of support to bearing mount as before. Tighten nuts. (**See Figure 3**)



**Figure 3**



**Figure 3A**