

Lankota, INC.

LAN – HP200

Hanger Bearing Kit

Installation Instructions

LAN – HP200
Parts break down list

| | | |
|---|--|---|
|  <p>*LAN – 18A</p> |  <p>LAN - 104</p> |  <p>* LAN - 3718</p> |
|  <p>LAN - 105</p> |  <p>207KRRB12</p> | |

*** Items are included in bag of hardware**
 John Deere and JD are registered trademarks of Deere & Company

For further information you may contact:

Lankota Inc.
(866) 526-5682

LAN – HP200 WELD – ON HANGER BEARING KIT

Preparation

1. Remove chain sprockets, protective tube, and clutch assemblies from left and right jackshafts on head.
2. Attach header to combine.
3. Lock header safety bar into proper position.

Procedure

1. Hold desired drive line to be used up to feeder house drive. Hold locking pins in collar in line with the groove in the feeder house drive shaft. Extend the drive line half way only with feeder house frame in the “level” position. This will allow for even travel of the drive shaft during header tilt. Mark shaft on header at this point.
2. Cut header shaft on mark. A chop saw clamped onto shaft works well. This eliminates need to remove shaft from header.
3. Assemble hanger bearing supports. Place Bearing (**LAN – 207KRRB12**) between two Flanges (**LAN – 105**) and attach to Support (**LAN – 104**) using three Bolts (**LAN – 18A**) and three Nuts (**LAN – 3718**). **Always bolt Hex Bearing (LAN-207KRRB12) to feeder house side of Hangar Bearing Support (LAN- 104) so bearing removal or replacement is possible if needed. (See Figure 1 & 1A)**
4. Slide Bearing Support Assembly on header jackshaft.

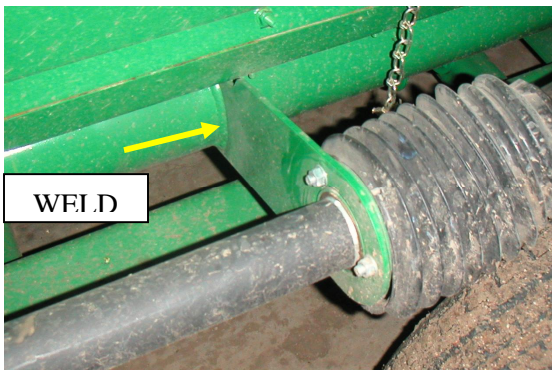


Figure 1

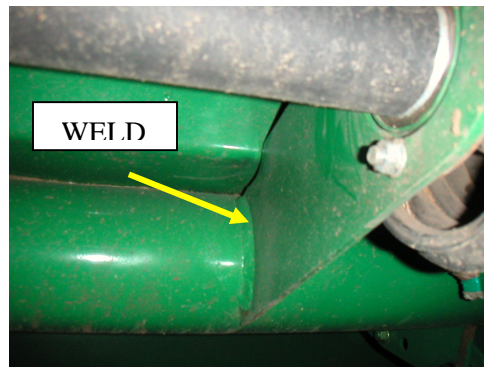


Figure 1A

1. Install hangar bearing as close to where driveshaft will connect to jackshaft as possible. 3 inches of jackshaft protruding out from bearing is ideal.
2. Measure and cut length needed for reinstalling protective tube on jackshaft.
3. Reinstall tube, hangar bearing, and driveshaft. Check all components for proper fit.
4. After proper alignment of jackshaft is secured, weld half moon end of support bracket to 5" main frame tube. (See **FIGURE 1 & 1A**)

Right Side

Platform Heads with Clutch Assemblies

1. Clutch, protective bell shield and protective tube should already be removed from jackshafts.
2. Hold desired drive line to be used up to feeder house drive. Hold locking pins in collar in line with the groove in the feeder house drive shaft. Extend the drive line half way only with feeder house frame in the "level" position. This will allow for even travel of the drive shaft during header tilt. Mark shaft on header at this point.
3. Cut header shaft on mark.
4. Assemble hangar bearing supports. Place Bearing (**LAN – 207KRRB12**) between two Flanges (**LAN – 105**) and attach to Support (**LAN – 104**) using three Bolts (**LAN – 18A**) and three Nuts (**LAN – 3718**). **Always bolt Hex Bearing (LAN-207KRRB12) to feeder house side of Hangar Bearing Support (LAN- 104) so bearing removal or replacement is possible. (See Figure 1 & 1A)**
5. Inspect to make sure all shielding is in place.
6. Align header shaft.
7. Weld hangar-bearing bracket to 5-inch main frame tube on bottom of head. **See Figure 2 & 2A. Always bolt Hex Bearing (LAN-207KRRB12) to feeder house side of Hangar Bearing Support (LAN- 104) so bearing removal or replacement is possible.**

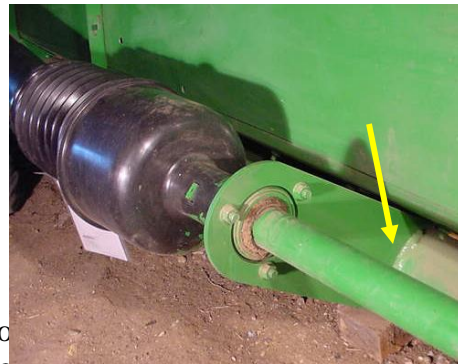


FIGURE 2

FIGURE 2A