



www.polyskid.com
P. O. Drawer 349, Monticello, GA. 31064
Phone: 800-542-7659
Fax: 706-468-2881
E-Mail: polytech@polyskid.com

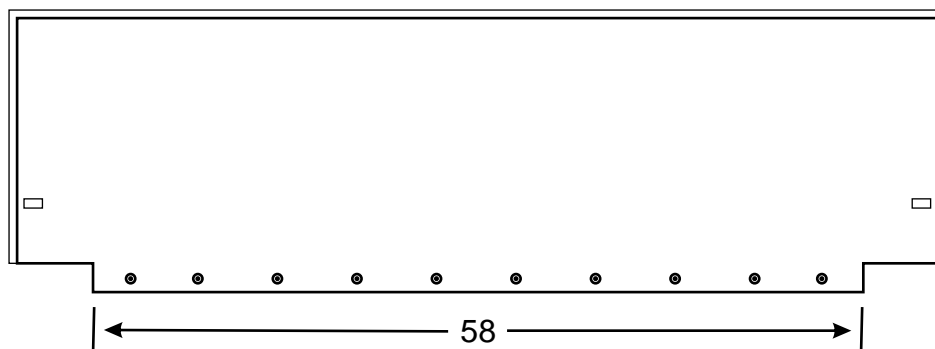
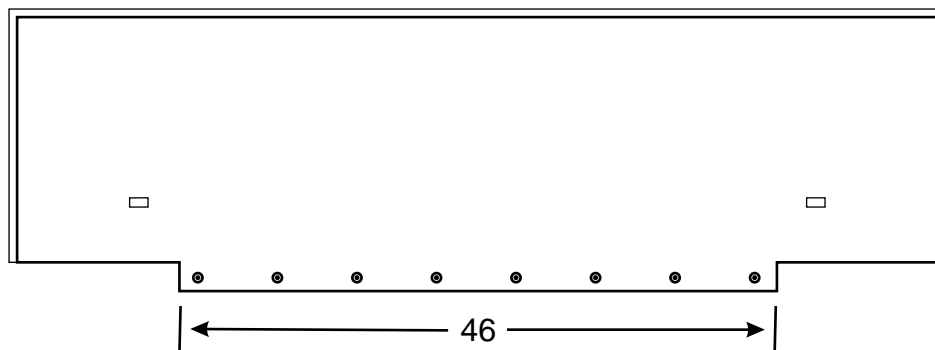
Installation of the JD 900 Series Flex Grain Platform Auger Trough Liner Kit

IT IS VERY IMPORTANT THAT YOU READ THE ENTIRE
INSTRUCTION SHEET BEFORE STARTING INSTALLATION

PLEASE REFER TO THE OPERATORS MANUAL FOR YOUR
SPECIFIC COMBINE FOR PERTINENT SAFETY PRECAUTIONS

Compare the contents with the enclosed "packing slip" to confirm
that you have received the correct parts and associated hardware.

Confirm that you have received the correct center panel for your
feeder opening and/ or model combine as illustrated below.

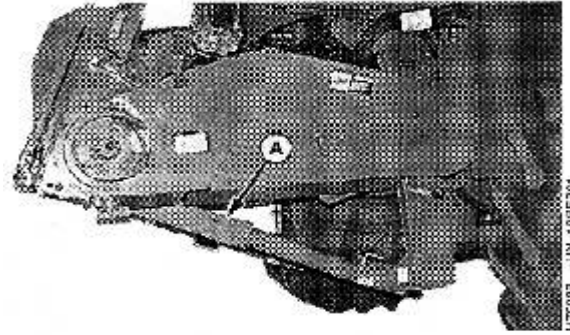


Questions or comments call 1-800-542-7659
IGPJK900_01Jun06

Hydraulic Cylinder Safety Stop

Lower safety stop (A) onto hydraulic cylinder rod.

A - Safety Stop



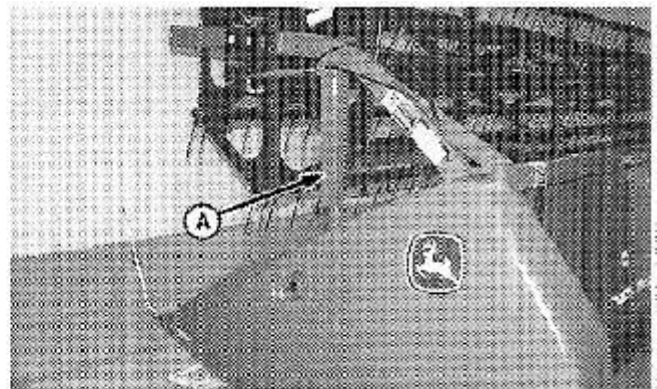
Setting Reel Safety Stops

⚠ CAUTION: Lower both safety stops (A) when working under or on the reel.

Sound horn, start combine engine and raise reel all the way. Stop combine engine, set parking brake and remove key.

Unhook stop (A) from storage clip, lower stop completely and ensure lock straps are locked on cylinder rod.

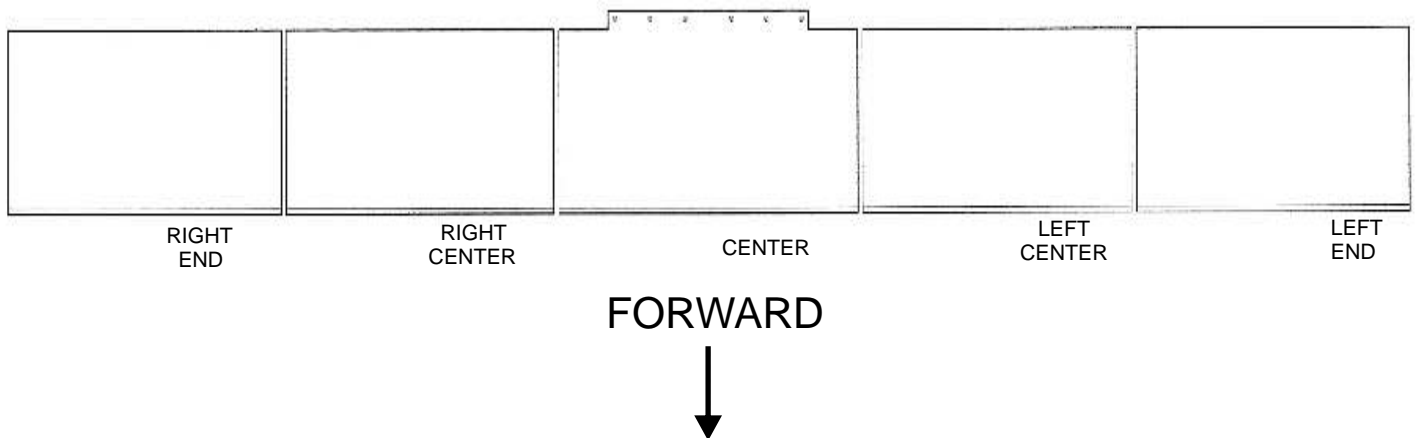
Repeat steps for other side of platform



Rigid platform shown

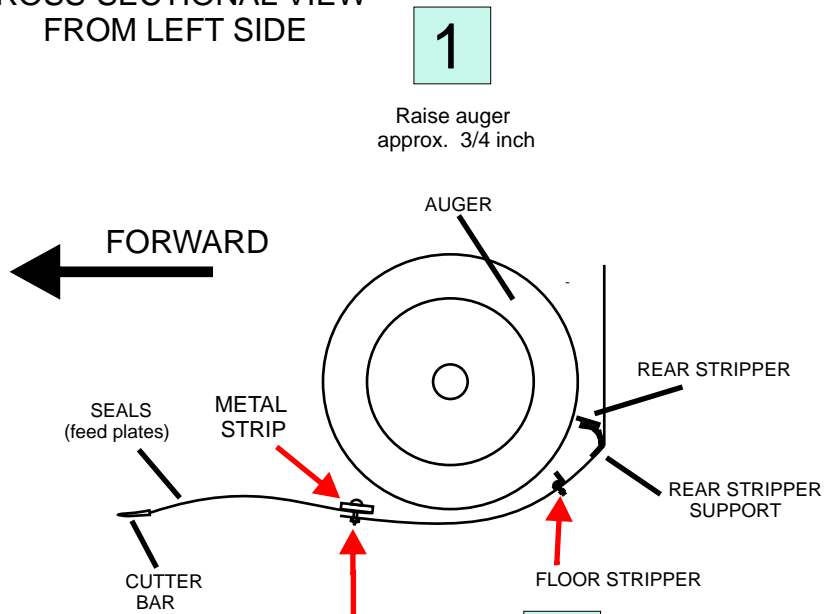
PANEL LAYOUT

THE TERMS “LEFT”, “RIGHT”, “FRONT”, and “REAR ” ARE DETERMINED BY FACING IN THE DIRECTION THE COMBINE WILL TRAVEL WHEN IN USE.



BRIEF OVERVIEW of INSTALLATION

CROSS-SECTIONAL VIEW FROM LEFT SIDE



1

Raise auger approx. 3/4 inch

2

Loosen all the bolts that secure the metal strip to create an 1/8"+ gap between the floor and the S.S. seals.

3

Remove the floor stripper angle.

4

Install panels by sliding under auger and past seals. Then, slide panels forward to insert flange under seals.

5

Panels are positioned to allow for expansion using the gauge block supplied.....



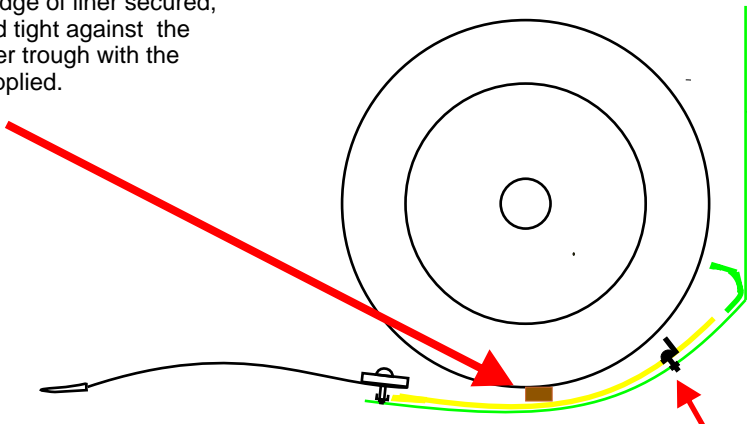
6

...then all bolts are re-tightened to clamp leading edge of liner.

Rear stripper and support are not removed.

7

With the leading edge of liner secured, the liner is wedged tight against the bottom of the auger trough with the wooden shims supplied.



8

Floor strippers are re-installed with the longer bolts supplied.

9

Liner is fastened across opening using drill bit and drive rivets supplied.



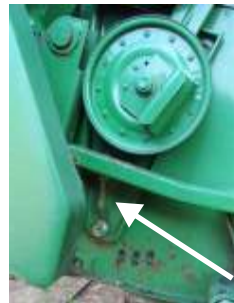
10

Auger height is re-adjusted.



PLEASE REVIEW THE FOLLOWING SECTIONS FOR EACH STEP ABOVE FOR FURTHER DETAILS AND IMPORTANT NOTES.

STEP 1 Raise each end of the auger approximately 3/4 inch to allow the floor strippers to be removed thru the front of the header.

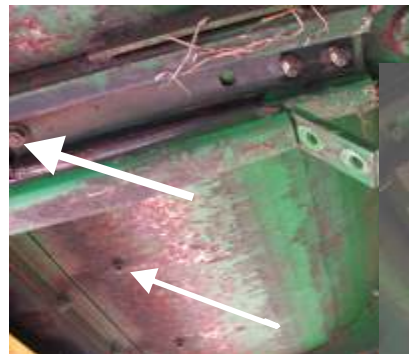


STEP 2 Loosen all the bolts that secure the metal strip to create a 1/8 inch + gap between the floor and the stainless steel seals.

**LOOSEN ONLY
DO NOT REMOVE**



Detach rear of each push link to access larger bolts.



Remove stabilizer



STEP 3 Remove both floor strippers and mounting hardware.



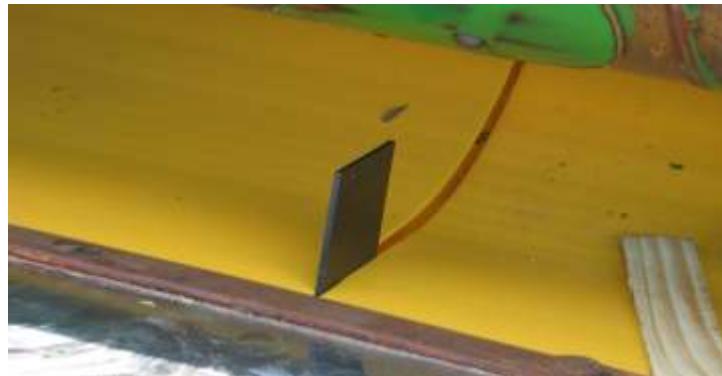
NOTE: WITH FLOOR STRIPPERS REMOVED, THOROUGHLY CLEAN THE AUGER TROUGH TO REMOVE ALL DIRT AND CROP RESIDUE.

STEP 4 Starting with the center panel and working outward, install panels by sliding under auger and past seals. Then, slide panels forward to insert flange under seals.

Center the rear of the CENTER PANEL in the opening.



STEP 5 With the center panel centered in the opening, position the outer panels with a 3/16 inch gap at each joint using the gauge block supplied.



STEP 6 With all the panels positioned properly at each joint and the front flange of each panel slid fully under the seals, tighten all the bolts which were loosened in STEP 2.

Re-assemble the push links and stabilizer.

STEPS 7 and 8

With the leading edge of each panel securely clamped, wedge the liner tight against the auger trough floor with the wooden shims supplied.

Shim half of the auger length at a time. Re-install the floor stripper for that side with the 5/16 x 1 carriage bolt, flat washers, and lock nuts supplied.

Repeat the process for the other side.



Rotate the auger to position a flight at the joints.



STEP 9 Remove the header from the combine. Using the pre-drilled holes as a guide, drill thru with the 9/32" drill bit supplied. Secure the liner with the 1/4" drive rivets supplied.



When using power tools, basic safety precautions should always be followed to reduce the risk of personal injury.

WEAR SAFETY GLASSES OR GOGGLES

STEP 10 Re-adjust auger height.