

LANAUGCIHK

Installation Instructions

Unloading Auger Extension with Grain Saver Door for Case IH Combines

Combine Models: 1440 to 2388

LANKOTA[®]

270 West Park Avenue

Huron, SD 57350

866-526-5682

Numerical Parts List

Part Numbers	Description	Qty
LANAUGCIH100	Main Body for Case Auger Kit	1
LANAUGCIH007	Secondary Body (Saddle) for Auger	1
LANAUGCIH009	Case Auger Extension Flighting	1
LANAUG009	Plastic Auger Spout	1
LANH217334	Spring for Grain Saver Door	2
LANAUG2006L	1/4" Auger Flighting Spacer-JD	1
LAN2007CIH	Bag of Hardware for Kit	1
LAN52MM3ZP	Bearing Flange	2
LANMOU20516GSA	Bearing with Lock Collar	1
LANAUGCIHBH	Bag of Hardware	1
LAN3B16A16	5/16" x 1.25" Hex Bolt	27
LAN93314A	1/4" x 1" Self-Tapping Hex Screw	4
LAN4A16A16	5/16" x 1.25" Carriage Bolt	3
LAN1616	5/16" Nyloc Nut	31
LAN1133	5/16" Flat Washer	55
LAN004A14032	1/4" x 1/2" Carriage Bolt	1

Pictorial Parts List

 <p>LANAUGCIH100 (1)</p>	 <p>LANAUGCIH007 (1)</p>	 <p>LAN4A16A16 (3)</p>	
 <p>LANAUGCIH009 (1)</p>	 <p>LANAUG009 (1)</p>	 <p>LAN93314A (4)</p>	
 <p>LANAUG2006L (1)</p>	 <p>LANH217334 (2)</p>	 <p>LAN004A14032 (1)</p>	 <p>LANMOU20516GSA (1)</p>
 <p>LAN3B16A16 (27)</p>	 <p>LAN1616 (31)</p>	 <p>LAN1133 (55)</p>	 <p>LAN52MM3ZP (2)</p>

Note: The Lankota bearing (LANMOU20516GSA) can be replaced with a John Deere bearing and lock collar (Part Numbers: JD8665 & JD8554 respectively) if it ever goes out.

Preparation

1. Park the combine on a flat level surface.
2. Make sure the auger is folded in.
3. Set the parking brake on the combine.
4. Turn off the combine engine and remove the key.

Kit Installation

Refer to Figures 1 & 2

1. Remove the spout, end cap and bearing from the existing auger.
Note: DO NOT pull the auger off of the 90° gearbox when removing the bearing as this will add more time to the installation and will require removing the auger and retiming with the vertical auger. If you do pull the auger out, remove inspection door near the elbow and mark the alignment of the two augers.
2. Slide the flighting (LANAUGCIH009) onto the auger shaft allowing 1/2" clearance so flighting does not rub on the bearing flange. There will be some overlapping of the existing flighting. Make sure new flighting overlaps on the **backside** of original flighting to ensure a smooth flow of grain. (If there is a gusset on the end, cut it off.) Weld flighting to auger shaft and existing flighting. Spiral spacer (LANAUG2006L) is provided to be placed between auger flighting and auger tube before welding, if needed.
3. Slide the Auger Extension Tube (LANAUGCIH100) over flighting until the holes in the side match with existing holes, both on the left and right side. Secure with 5/16" bolts (LAN3B16A16), washers (LAN1133) and lock nuts (LAN1616). Install 10 bolts, washers and nuts along the top of the tube.

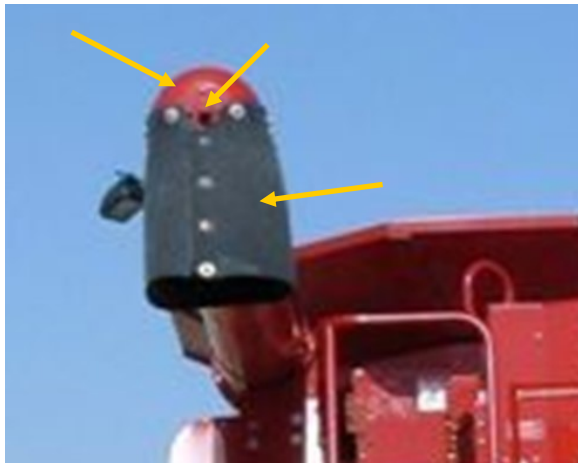
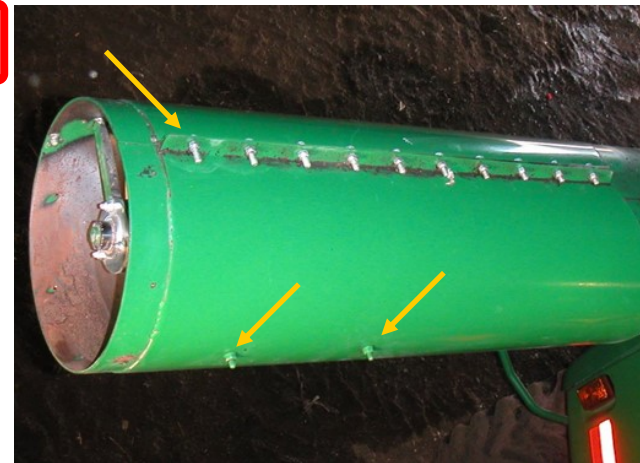


Figure 1

Figure 2



Kit Installation

Refer to Figures 3 & 4

4. Install the bearing & locking collar (LANMOU20516GSA) on the end of the auger shaft using the 2 bearing flanges (LAN52MM3ZP) and three 5/16" x 1.25" carriage bolts (LAN4A16A16) and lock nuts (LAN1616) provided. Lock the collar in place after carriage bolts are tight.
5. Install provided spring (two springs are provided, one is only for spare if needed) through stationary mount. Install other end of spring on traveling arm. Several attachment holes are available so you can set the desired tension on the door.

Figure 3

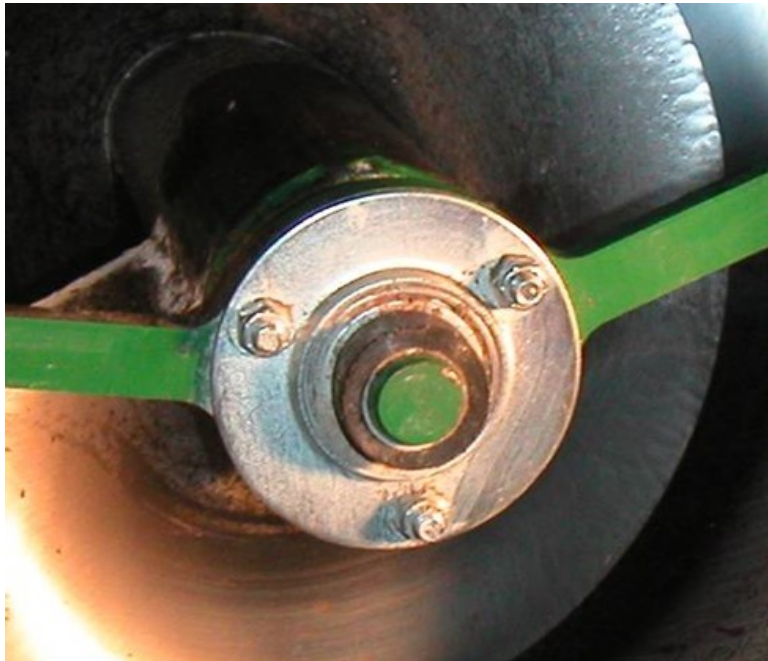


Figure 4



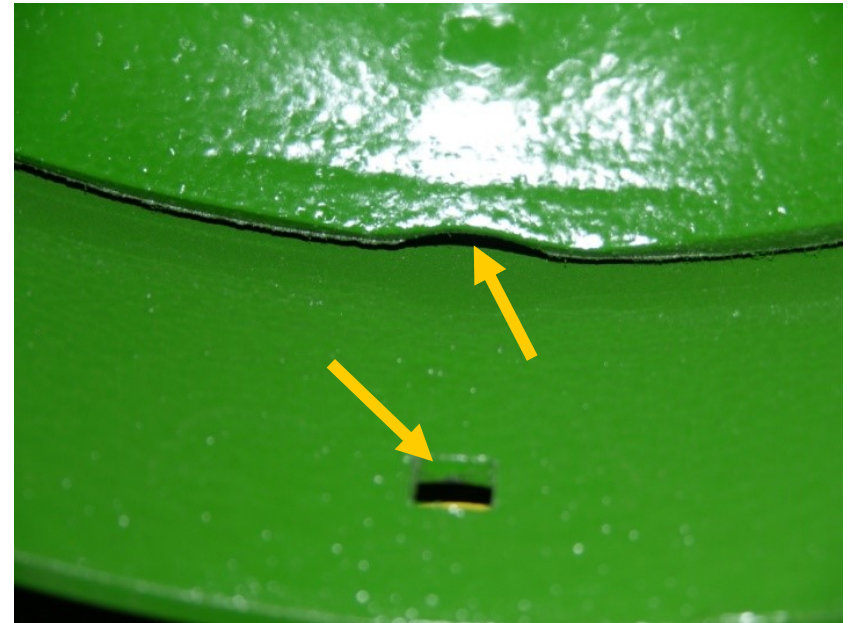
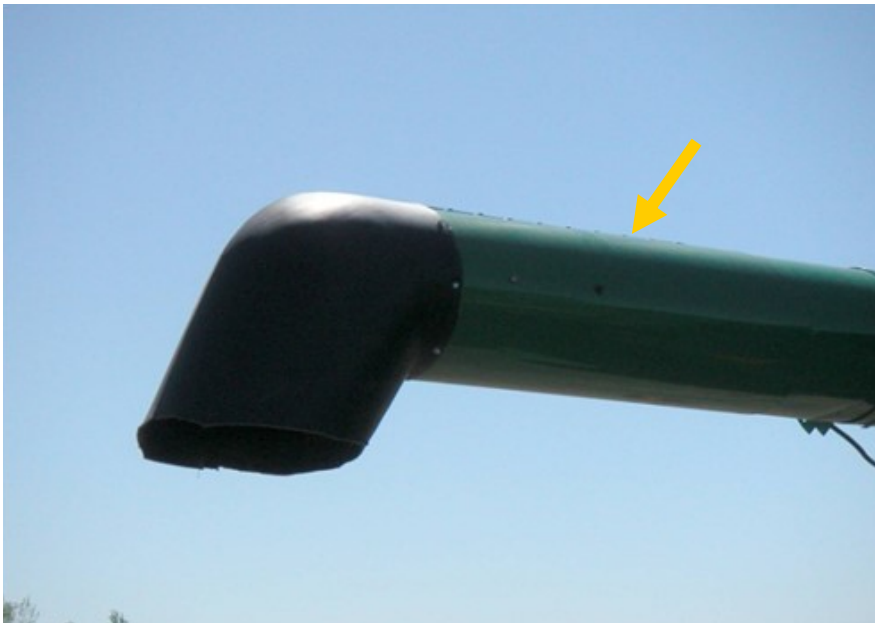
Kit Installation

Refer to Figures 5 & 6

6. Slide the spout (LANAUGC09) over the tube, overlapping the end by 1-1/4" and align so the end points straight down when unfolded. Mark through carriage bolt hole in bottom of red extension.
7. Remove spout and drill at mark with a 5/16" drill bit.
8. Fasten spout (ONLY AROUND THE TOP HALF OF TUBE AVOIDING CONTACT WITH MOVEMENT OF SPRING LOADED DOOR), with four self-tapping screws (LAN93314A) and seven washers (LAN1133), through the spout and metal ring (drill pilot holes if necessary). Install carriage bolt (LAN14032) down through square hole in bottom of grain saver door. The door should float just over the head of the bolt. Secure bolt with washer (LAN1133) and lock nut (LAN1616).

Figure 5

Figure 6



Kit Installation

Refer to Figure 7

9. Remove the existing small bracket located on the “cradle” at the midpoint of the auger.
10. Center the saddle support sleeve (LANAUGCIH007) on the saddle support when auger is retracted as best as possible. Secure with 5/16” bolts (LAN3B16A16), washers (LAN1133) and lock nuts (LAN1616) along the top of the saddle sleeve.
11. Reinstall original bracket over top of the new sleeve. This will strengthen the entire original tube to compensate for the extension and added weight during unloading.



Figure 7

WARRANTY STATEMENT: LANKOTA WARRANTY ONLY COVERS PRODUCTS PRODUCED BY LANKOTA AND DOES NOT COVER PARTS MADE AND/OR SOLD BY AFTERMARKET MANUFACTURERS, OR THE ORIGINAL MANUFACTURER, OR THAT WERE PART OF THE ORIGINAL EQUIPMENT’S CONSTRUCTION.

For further technical assistance,

Call Lankota Inc. at:

1-866-526-5682