




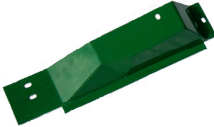
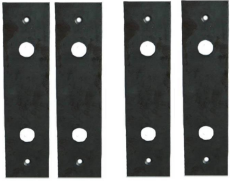



Lankota, INC.

LAN – 84214-W

**Feeder House Enclosure Kit
For Wide Bodied Level Land
Combines**

Installation Instructions

LAN – 84214-W
Parts break down list

 <p>LAN - 204552</p>	 <p>*LAN – 19M8549</p>	
 <p>LAN - 203948</p>	 <p>LAN - 203949</p>	 <p>LAN - 204918</p>
 <p>LAN - 204628</p>	 <p>* LAN- 03M7190</p>	 <p>* LAN – 14M7296</p>

*** Items are included in bag of hardware**

John Deere and JD are registered trademarks of Deere & Company

For further technical information you may contact:

Lankota Inc
(866) 526-5682

LAN 84214-W Level Land Feeder House Drum Deflector and Hook Assemblies

Preparation

1. Ensure combine is parked on level ground and raise the feeder house until it is level.
2. Properly support feeder house frame using safety lock.

Removing Mounting points

1. Remove beam supports where shown with arrows. Mark the side and number of shims used as you can reuse them or use the supplied shims with the kit using the same number as removed. **(See Figure 1)**
2. After removing beam supports, ensure the original bolts are the same size as the Counter Sunk Bolts (**LAN-19M8549**) supplied in this kit. If they are not the same size, drill out the holes using a 9/16 drill bit and tap the holes using a 16mm with 2mm pitch tap. **(See Figure 1)**



Figure 1 (9600)

Removing Deflector Shields

1. Remove the five nuts and bolts from top deflector and the two carriage bolts on the bottom left and right side as shown with arrows. (See **Figure 2**)



Figure 2

2. Remove entire deflector assembly. This is done by lifting the assembly upwards. (See **Figures 3**)



Figure 3

Mounting New Deflectors

1. Align the three holes on the top plate (**LAN – 204552**) with the feeder house and attach using the three Bolts (**LAN – 03M7190**) and Lock Nuts (**LAN – 14M7296**) provided. (See **Figure 4**)



Figure 4

2. Attach side deflectors (**LAN – 203948 left side & LAN – 203949 right side**) to feeder house and top deflector using 3 Bolts (**LAN – 03M7190**) and 3 Lock Nuts (**LAN – 14M7296**) on each side. (See **Figure 5**) **9600 & 9610 combines you may need to drill and tap a hole for the upper mounting bolt.**

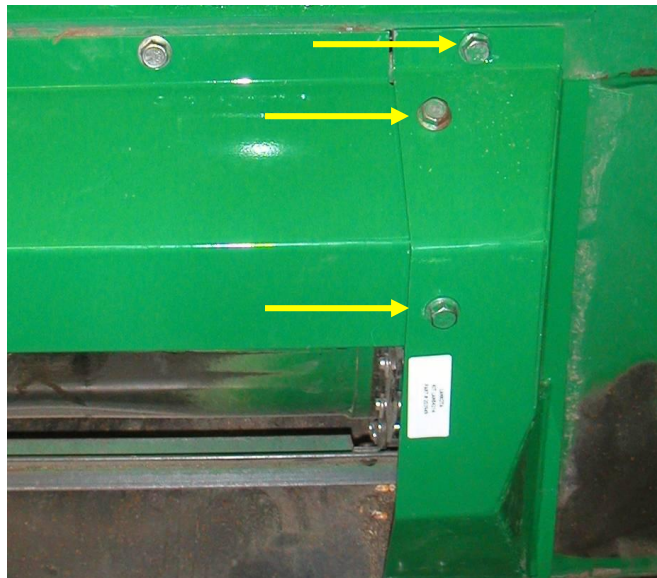


Figure 5

3. Re-install the two carriage bolts and nuts at the bottom of the side deflectors. (See **Figure 6**)



Figure 6

4. Replace shims under beam supports that were removed in **step 3**. Ensuring the same level and height as before. Or replace with Shims (**LAN-204918**) provided with kit.
5. Attach Hook Assemblies (**LAN-204268**) to the feeder house using the four Countersunk Bolts (**LAN – 19M8549**) supplied with kit.



Figure 7

NOTE:**COMPLAINT:**

**NEW COUNTERSUNK BEAM SUPPORT BOLTS
WILL NOT FIT IN ORIGINAL HOLES.**

ACTION:

**IN EARLIER MODEL COMBINES, THE BEAM
SUPPORTS ON THE TOP OF THE FEEDER
HOUSE MAY BE ATTACHED TO THE FEEDER
HOUSE WITH 12mm X 50mm BOLTS. ON
LATER MODEL COMBINES THE SUPPORTS
ARE ATTACHED WITH 16mm X 60mm BOLTS.**

**IN THIS KIT, WE SUPPLY 16mm X 40mm,
(LAN-19M8549) BOLTS TO ATTACH THE NEW
HOOK ASSEMBLIES, (LAN-204628) TO THE
FEEDER HOUSE. IF BEAM SUPPORT
RETAINING NUTS ARE NOT METRIC 16 (M16),
YOU MUST DRILL OUT HOLES TO A SIZE OF
14.25mm +/- .25mm AND TAP TO A THREAD
SIZE OF 16mm WITH A 2mm THREAD PITCH.**