



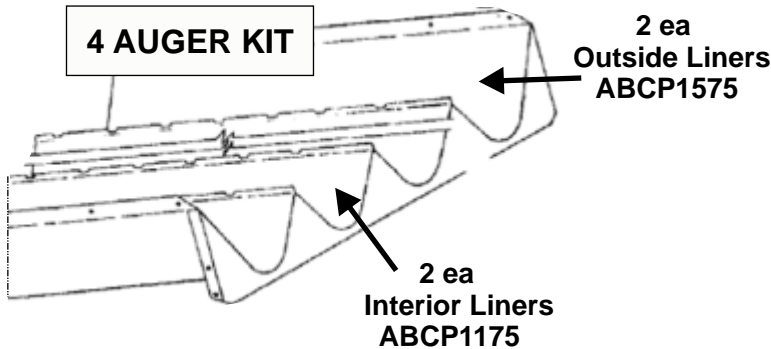
www.polyskid.com
P. O. Drawer 349, Monticello, GA. 31064
Phone: 800-542-7659, Fax: 706-468-2881
E-Mail: polytech@polyskid.com

INSTALLATION of the CASE AUGER BED TROUGH LINER KITS ABCK4060, ABCK80, ABCK11, ABCK15

**READ THE ENTIRE INSTRUCTION SHEET
BEFORE STARTING INSTALLATION**

PLEASE REFER TO THE OPERATORS MANUAL FOR YOUR
SPECIFIC COMBINE FOR PERTINENT SAFETY PRECAUTIONS

Compare the contents with the enclosed "packing slip" to confirm
that you have received the correct liners and associated hardware.



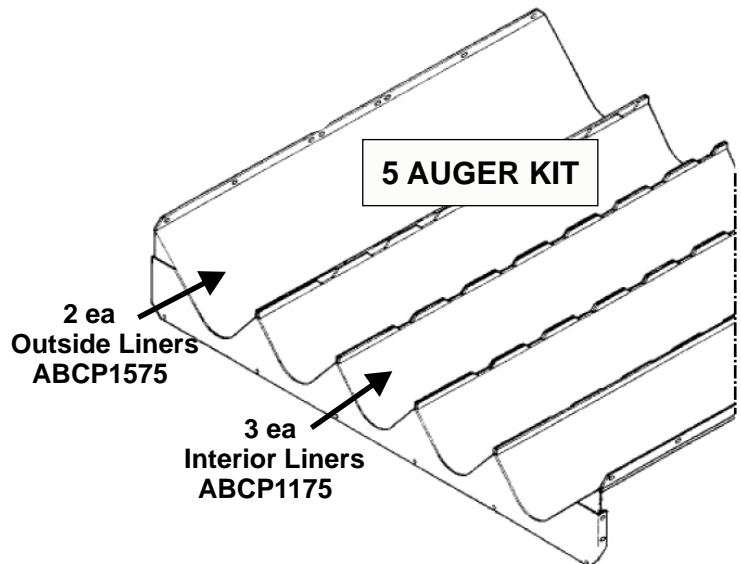
Stainless Hold Down Strip
ABCHD53 2ea per trough

Combine Model

1440, 1460, 1470
1640, 1644, 1660, 1666
2144, 2166
2344, 2366

Combine Model

1480, 1482
1680, 1682, 1688
2188
2377, 2388
2577, 2588



Stainless Hold Down Strip
ABCHD53 2ea per trough

STEP 1 Remove the concaves above the auger bed to obtain additional working room.



STEP 2 Thoroughly clean each auger trough to remove all grain, dust, and crop residue.



STEP 3 Remove the front bearing block mounting bolts.



STEP 4

Raise the front of the auger and insert the liner as illustrated.



STEP 5

Re-install the bearing block mounting bolts.

IMPORTANT: EXCESSIVELY WORN BEARINGS MUST BE REPLACED TO AVOID DAMAGE TO THE LINER.



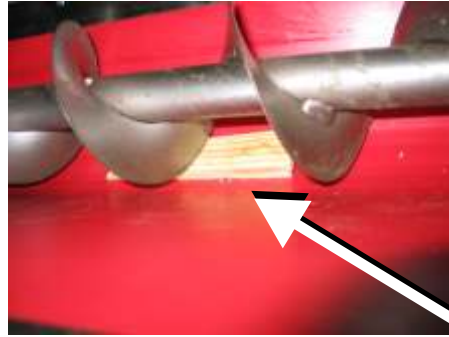
STEP 6

Slide the liner forward until it makes contact with the front of the auger trough.

Position the liner so that it best fits the contour of the trough and is parallel with the upper edge of the trough.



STEP 7 With the auger bearing secured and the liner properly aligned with the trough, wedge the liner against the bottom of the trough with the wooden shims supplied.



Wooden Shims

NOTE: The liner has been designed to extend approximately 1 inch beyond the rear end of the trough.

STEP 8 Position one of the Hold Down strips so that the etching is facing up and it is overlapping the liner 1/2 inch as illustrated below.

While holding the Hold Down strip in position, fasten the strip in the center hole with one of the self drilling screws supplied.



Install with etching facing up.



ABCHD53 (etching)



Stainless Hold Down Strip

Overlap liner 1/2 inch

NOTE: Two types of rivets have been supplied to secure the metal stripes. The steel rivet is recommended for its added strength and abrasion resistance. An aluminum rivet has also been supplied for those do not have a rivet gun capable of pulling a 3/16” steel rivet with a steel mandrel.

AH 105
3/16 X 1/4 STEEL RIVET
SEE INSTRUCTION SHEET

AH 106
3/16 X 1/4 ALUMINUM RIVET
SEE INSTRUCTION SHEET

STEP 9 Confirm that the Hold Down strip is still parallel to and overlapping the liner 1/2” along its entire length.

Working from the center outward, drill and rivet the strip using the 13/64” drill bit supplied.

Install a rivet in each hole before drilling the next hole.



STEP 10 Secure the other side of the liner with a second Hold Down strip using the same procedure as describe in Steps 8 and 9.

When using power tools, basic safety precautions should always be followed to reduce the risk of personal injury.

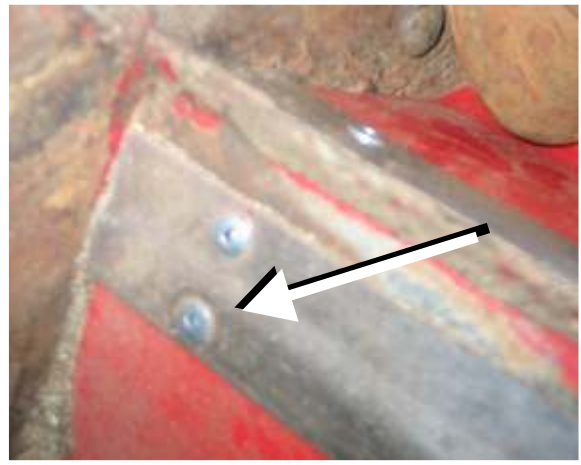
WEAR SAFETY GLASSES OR GOGGLES

STEP 11

To complete the installation, drill and rivet the bottom hole on the front end of both Hold Down strips.

Remove the wooden shims from Step 7.

DO NOT RIVET THE OUTPUT END!



The liner must be allowed to expand and contract with temperature change.

STEP 12

Install the remaining liners using the same procedure.

