

# JD Divider Installation Instructions

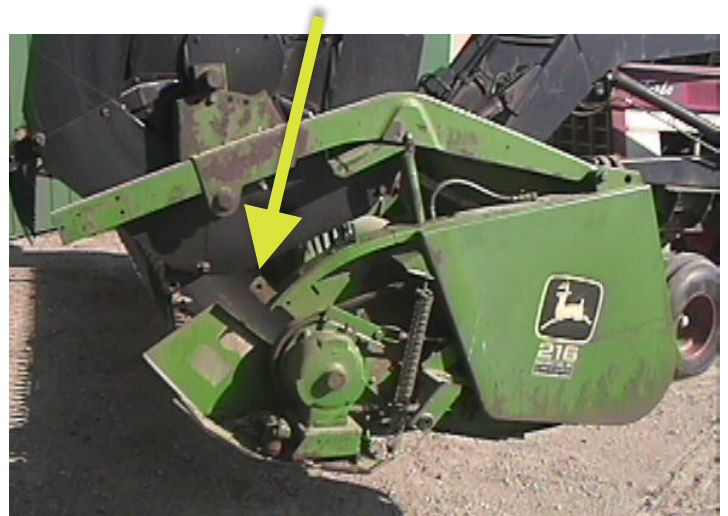


When you remove the old style dividers, removal of linkage mounted to reel lift arm is also required. The old spring will be replaced by the new spring and adjustment bolt.

View after removal of old divider, spring and brackets.



View after shifting spring mount bracket.



*The bracket that the old spring is hooked into (above sickle drive) is mounted with 3 carriage bolts. Remove all 3 bolts, shift the spring bracket forward one set of holes, and remount with 2 bolts.*

Hook the new spring into shifted bracket, mount the divider, then stick the adjustment bolt up through the hole in the angle bracket located on the divider and thread it into the new spring (approx. 3").