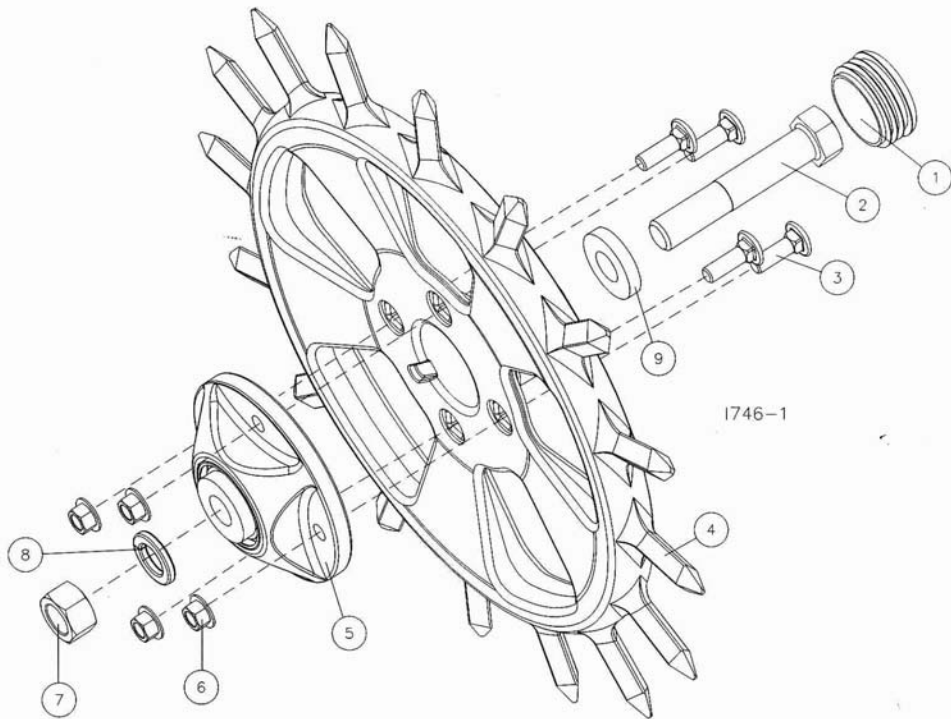




6200-001/ 6200-010/ 6200-011

CAST SPIKE CLOSE WHEEL KIT

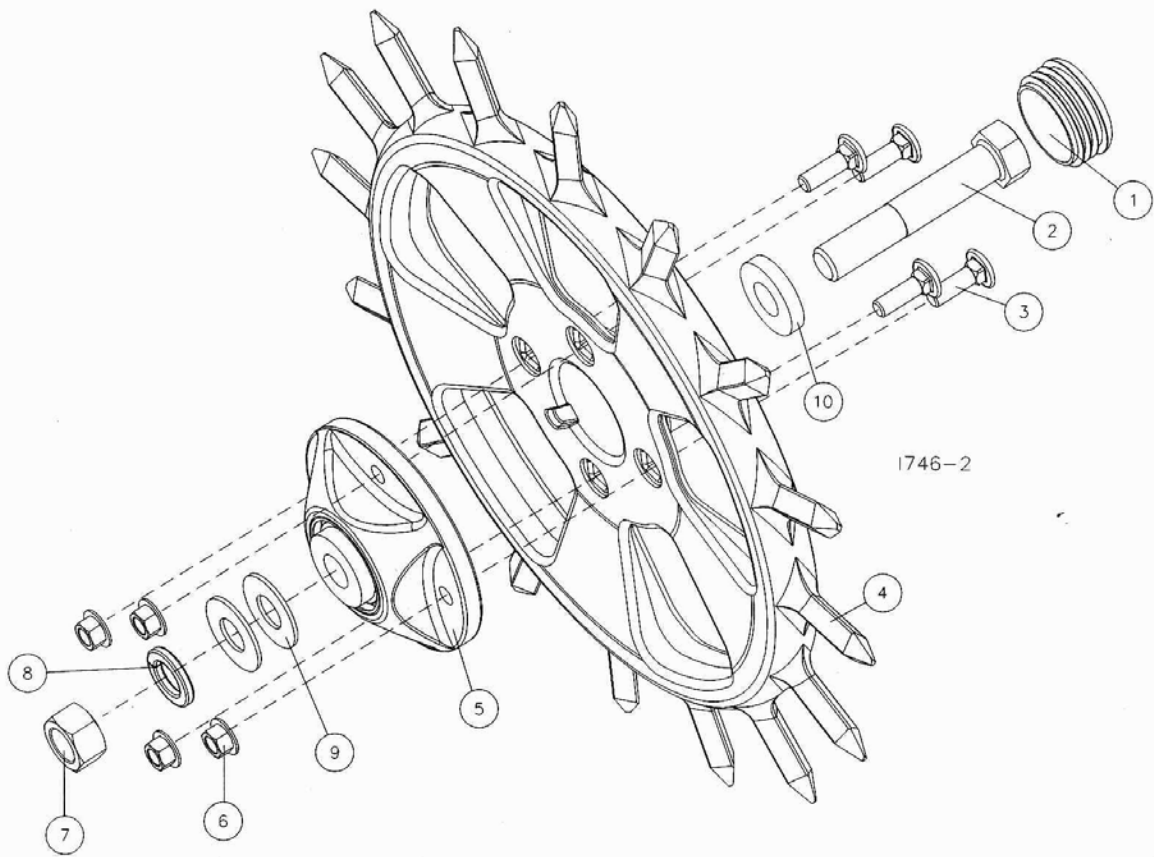
PARTS IDENTIFICATION



6200-001 - CAST SPIKE CLOSE WHEEL KIT - (KINZE)

DET	QTY	PART NO.	DESCRIPTION
1	2	2515-726	POLY HUB CAP, NIAGRA #RT14
2	2	2502-325	5/8-11 X 3 HHCS GR 5 ZYD.
3	8	2505-206	5/16-18 X 1 CAR BLT GR 5 ZYD.
4	2	6200-355	CAST SPIKE WHEEL, PAINTED
5	2	2965-128	HUB AND BEARING ASS'Y., 4 BOLT
6	8	2520-206	5/16-18 FLANGE LOCK NUT ZYD.
7	2	2520-452	5/8-11 HEX NUT ZYD.
8	2	2525-451	5/8-11 MED LOCK WASHER ZYD.
9	2	2527-530	1.50D X 21/32ID 3/16TK MA BU

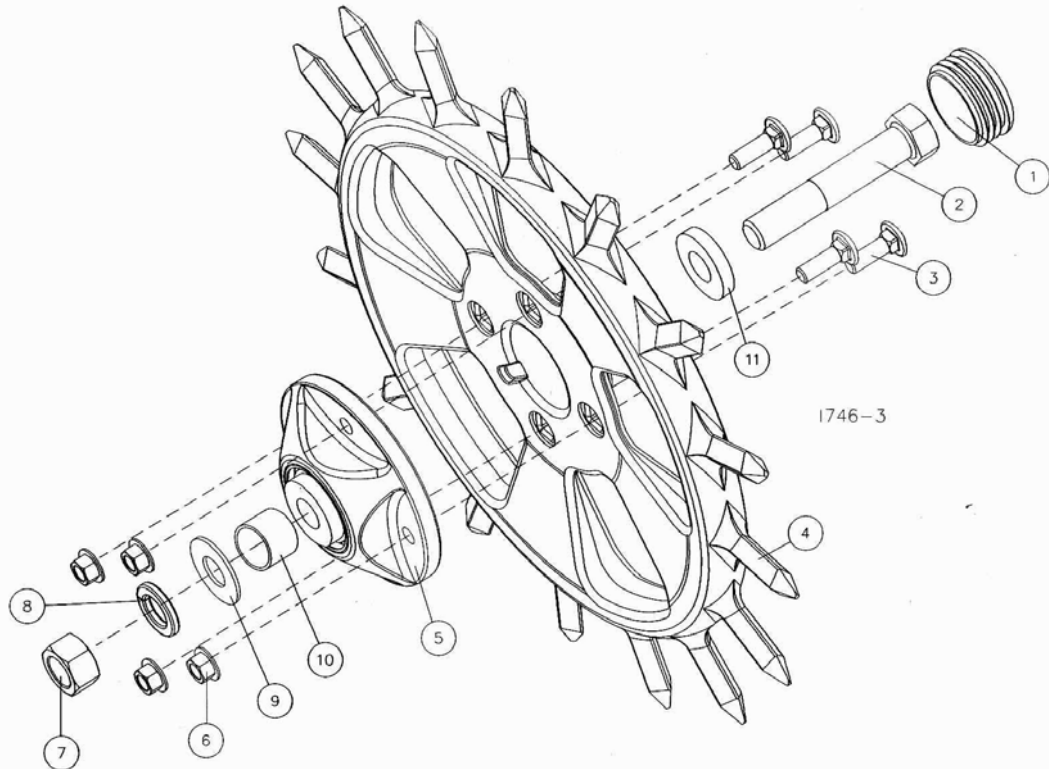
PARTS IDENTIFICATION



6200-001 - CAST SPIKE CLOSE WHEEL KIT - (WHITE)

DET	QTY	PART NO.	DESCRIPTION
1	2	2515-726	POLY HUB CAP, NIAGRA #RT14
2	2	2502-324	5/8-11 X 3-1/2 HHCS GR 5 ZYD.
3	8	2505-206	5/16-18 X 1 CAR BLT GR 5 ZYD.
4	2	6200-355	CAST SPIKE WHEEL, PAINTED
5	2	2965-128	HUB AND BEARING ASS'Y., 4 BOLT
6	8	2520-206	5/16-18 FLANGE LOCK NUT ZYD.
7	2	2520-452	5/8-11 HEX NUT ZYD.
8	2	2525-451	5/8-11 MED LOCK WASHER ZYD.
9	4	2526-455	WASHER 21/32" X 1 1/4" X 1/4"
10	2	2527-530	1.50D X 21/32ID 3/16TK MA BU

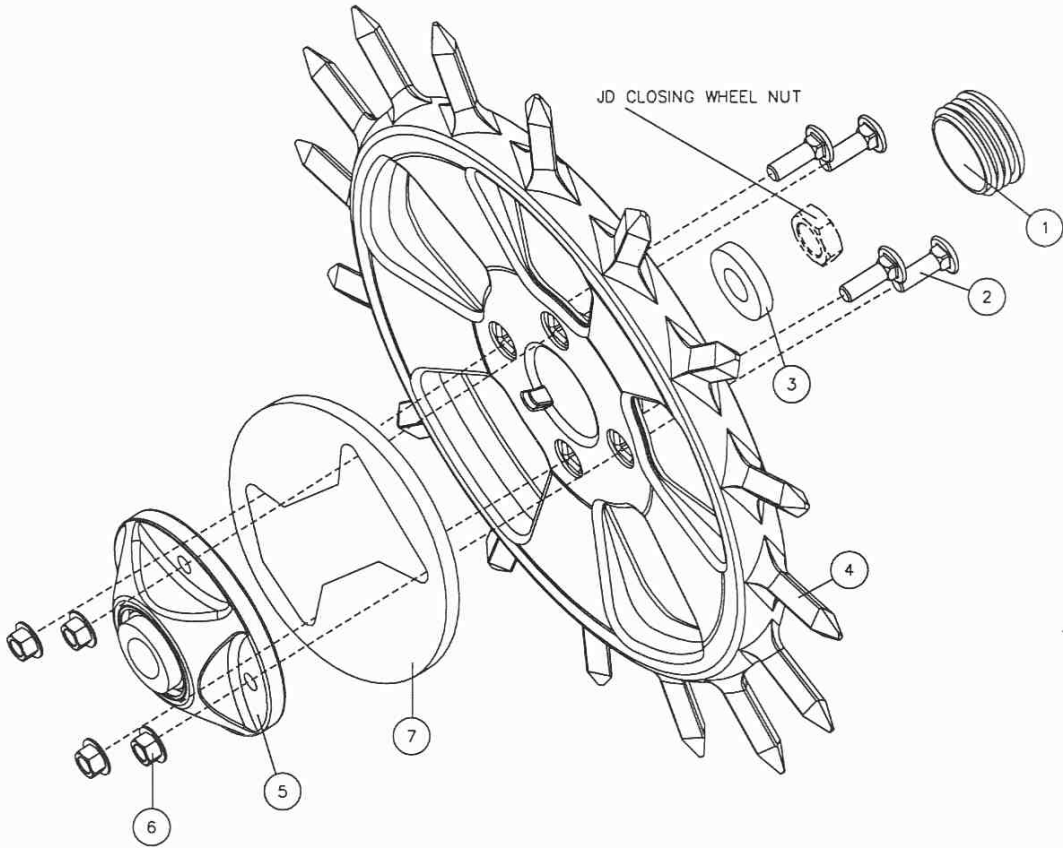
PARTS IDENTIFICATION



6200-001 – CAST SPIKE CLOSE WHEEL KIT – (JOHN DEERE)

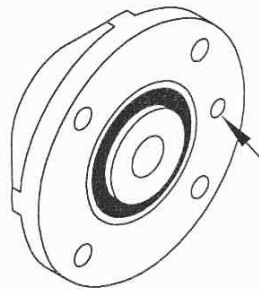
DET	QTY	PART NO.	DESCRIPTION
1	2	2515-726	POLY HUB CAP, NIAGRA #RT14
2	2	2502-324	5/8-11 X 3-1/2 HHCS GR 5 ZYD.
3	8	2505-206	5/16-18 X 1 CAR BLT GR 5 ZYD.
4	2	6200-355	CAST SPIKE WHEEL, PAINTED
5	2	2965-128	HUB AND BEARING ASS'Y., 4 BOLT
6	8	2520-206	5/16-18 FLANGE LOCK NUT ZYD.
7	2	2520-452	5/8-11 HEX NUT ZYD.
8	2	2525-451	5/8-11 MED LOCK WASHER ZYD.
9	2	2526-455	WASHER 21/32" X 1 1/4" X 1/4"
10	2	6000-335	9/16" BUSHING
11	2	2527-530	1.50D X 21/32ID 3/16TK MA BU

PARTS IDENTIFICATION



6200-003 SPIKE CLOSING WHEEL FOR JD 7200

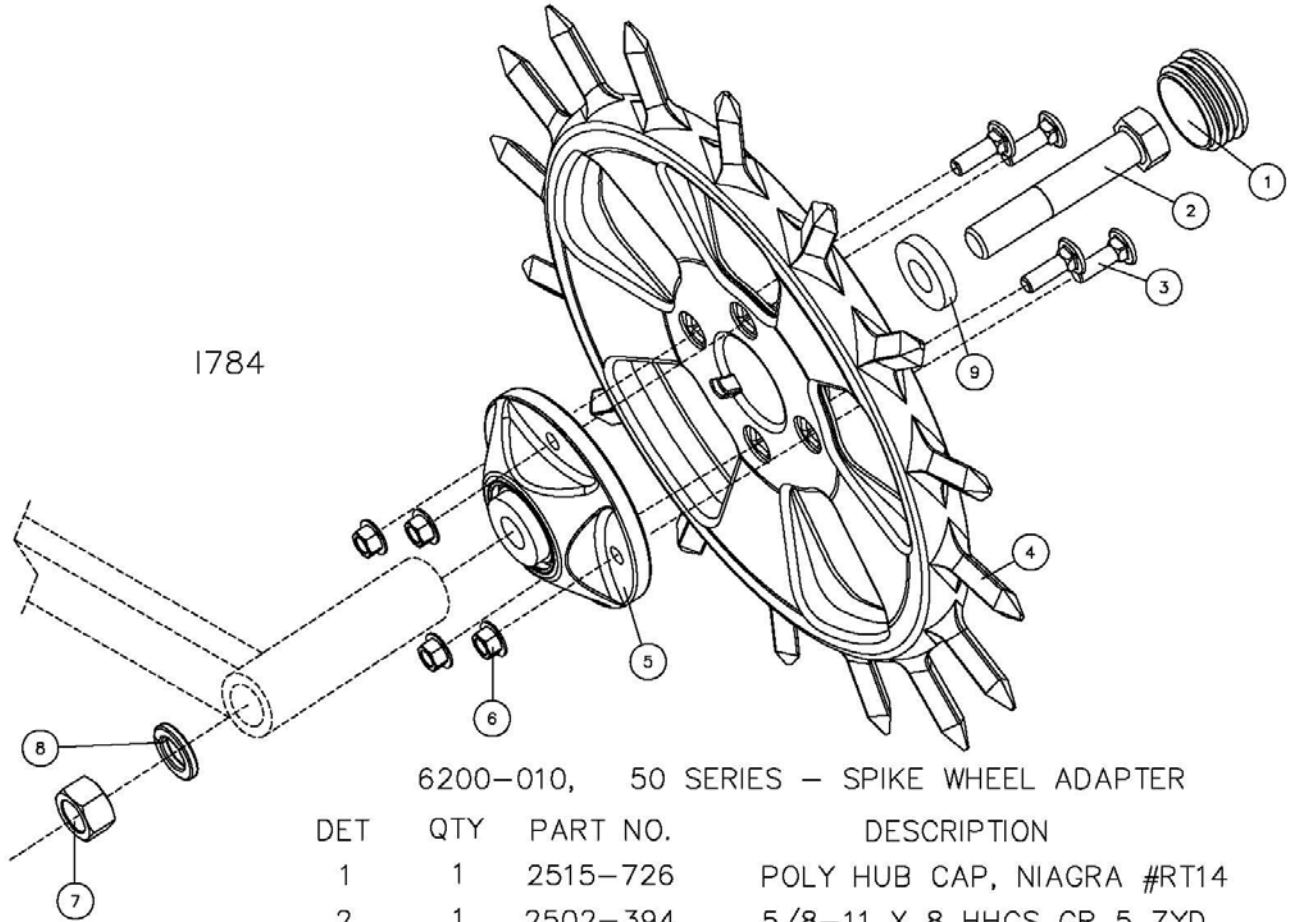
DET	QTY	PART NO.	DESCRIPTION
1	2	2515-726	POLY HUB CAP, NIAGRA #RT14
2	8	2505-207	5/16-18 X 1-1/4 CAR BLT GR 5 ZYD.
3	2	2527-530	1.50OD X 21/32ID 3/16TK MA BU
4	2	6200-355	CAST SPIKE WHEEL, PAINTED
5	2	6200-358	BEARING HUB, 7200 CLOSING WHEEL
6	8	2520-206	5/16-18 FLANGE LOCK NUT ZYD.
7	2	6200-360	SHIM SPACER



1769

ALIGN GREASE
FITTING HOLES.

PARTS IDENTIFICATION

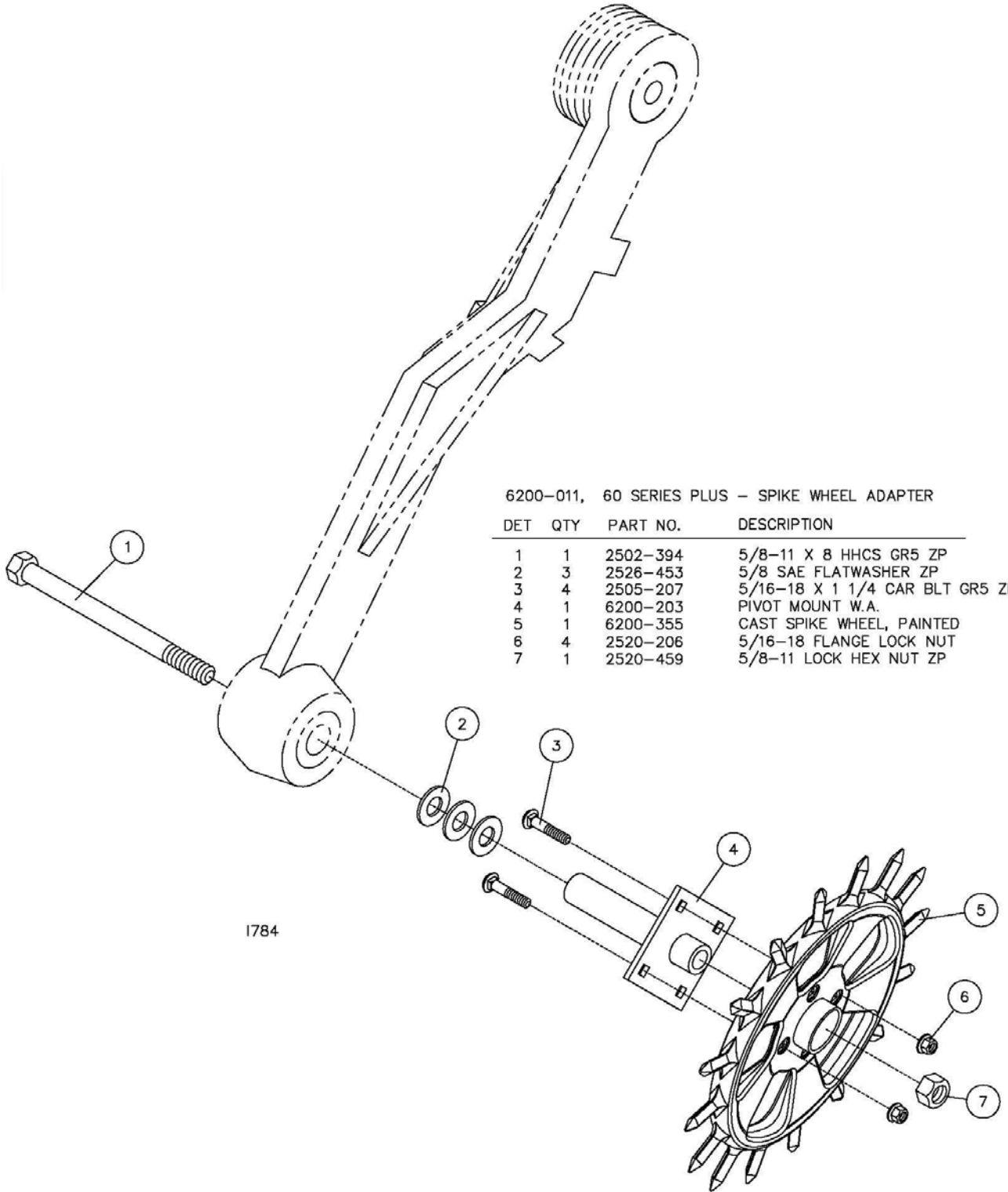


6200-010, 50 SERIES - SPIKE WHEEL ADAPTER

DET	QTY	PART NO.	DESCRIPTION
1	1	2515-726	POLY HUB CAP, NIAGRA #RT14
2	1	2502-394	5/8-11 X 8 HHCS GR 5 ZYD.
3	4	2505-206	5/16-18 X 1 CAR BLT GR 5 ZYD.
4	1	6200-355	CAST SPIKE WHEEL, PAINTED
5	1	2965-128	HUB AND BEARING ASS'Y., 4 BOLT
6	4	2520-206	5/16-18 FLANGE LOCK NUT ZYD.
7	1	2520-452	5/8-11 HEX NUT ZYD.
8	1	2525-451	5/8-11 MED LOCK WASHER ZYD.
9	1	2527-530	1.50D X 21/32ID 3/16TK MA BU



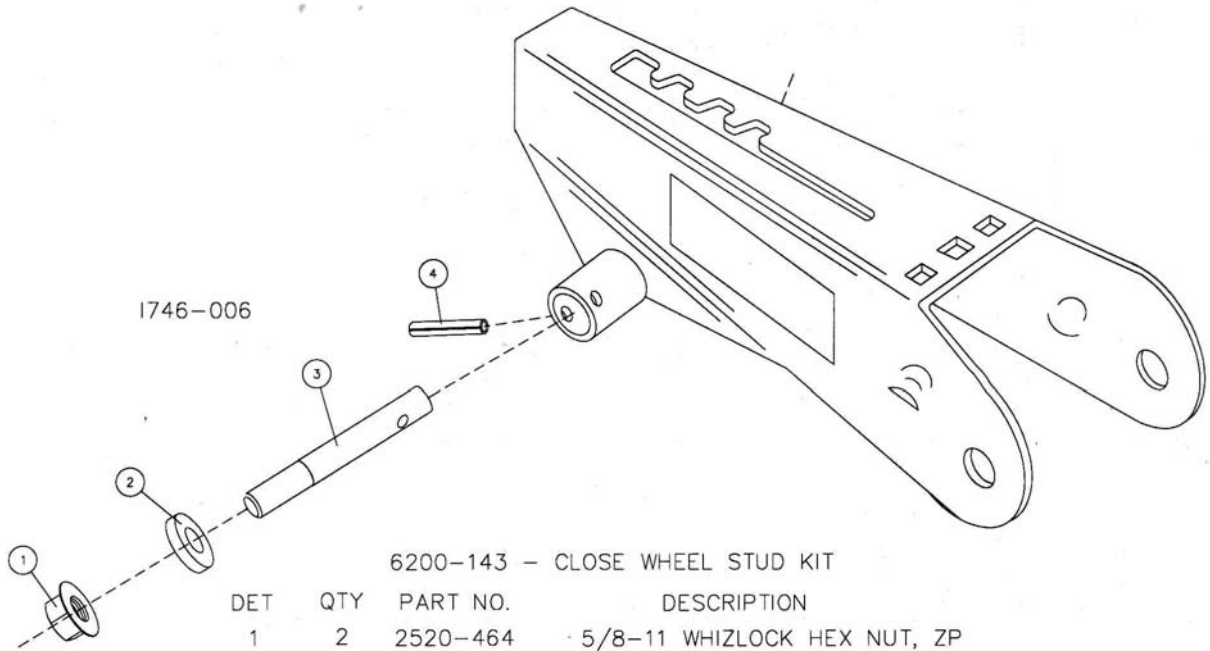
PARTS IDENTIFICATION



6200-011, 60 SERIES PLUS - SPIKE WHEEL ADAPTER

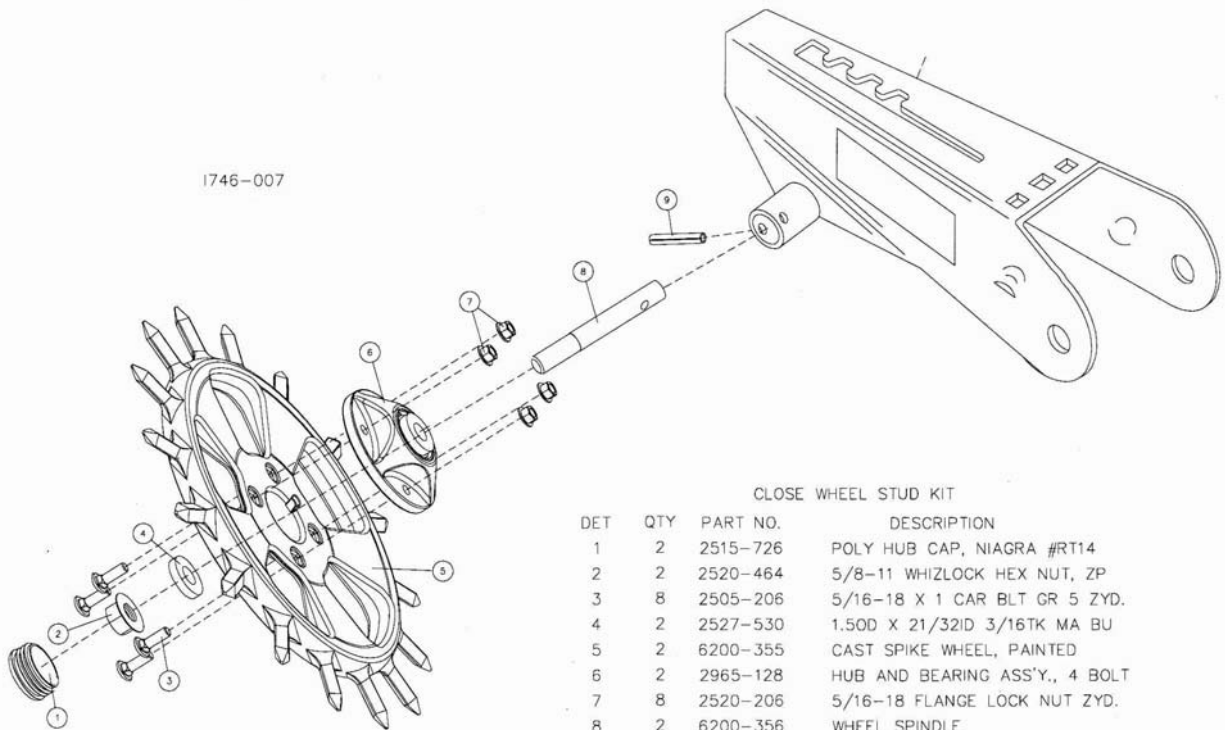
DET	QTY	PART NO.	DESCRIPTION
1	1	2502-394	5/8-11 X 8 HHCS GR5 ZP
2	3	2526-453	5/8 SAE FLATWASHER ZP
3	4	2505-207	5/16-18 X 1 1/4 CAR BLT GR5 ZP
4	1	6200-203	PIVOT MOUNT W.A.
5	1	6200-355	CAST SPIKE WHEEL, PAINTED
6	4	2520-206	5/16-18 FLANGE LOCK NUT
7	1	2520-459	5/8-11 LOCK HEX NUT ZP

PARTS IDENTIFICATION



6200-143 - CLOSE WHEEL STUD KIT

DET	QTY	PART NO.	DESCRIPTION
1	2	2520-464	5/8-11 WHIZLOCK HEX NUT, ZP
2	2	2527-530	1.50D X 21/32ID 3/16TK MA BU
3	2	6200-356	WHEEL SPINDLE
4	2	2530-155	1/4 X 1-1/4 ROLL PIN ZP

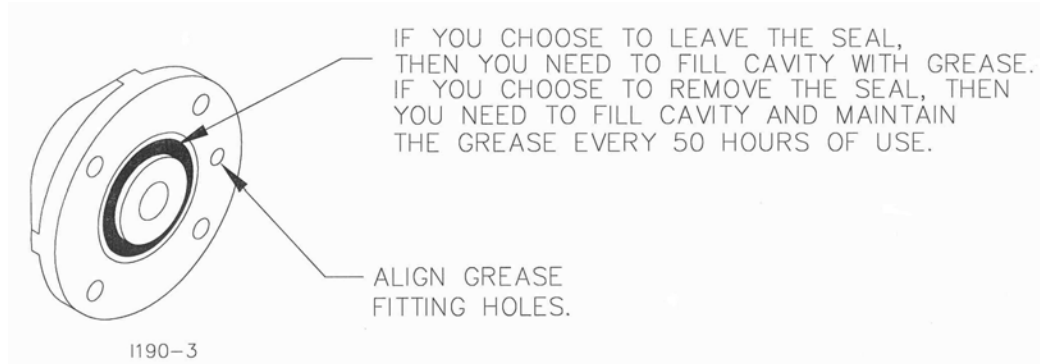


CLOSE WHEEL STUD KIT

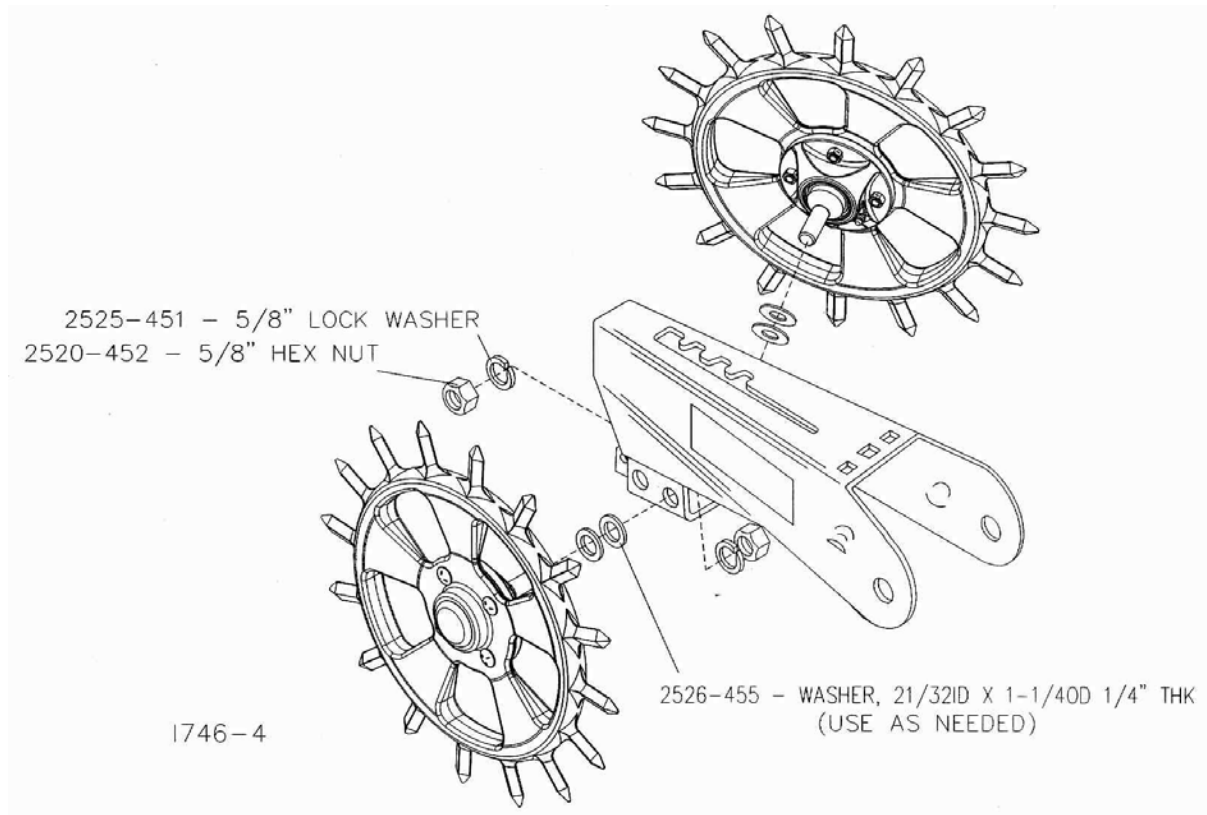
DET	QTY	PART NO.	DESCRIPTION
1	2	2515-726	POLY HUB CAP, NIAGRA #RT14
2	2	2520-464	5/8-11 WHIZLOCK HEX NUT, ZP
3	8	2505-206	5/16-18 X 1 CAR BLT GR 5 ZYD.
4	2	2527-530	1.50D X 21/32ID 3/16TK MA BU
5	2	6200-355	CAST SPIKE WHEEL, PAINTED
6	2	2965-128	HUB AND BEARING ASS'Y., 4 BOLT
7	8	2520-206	5/16-18 FLANGE LOCK NUT ZYD.
8	2	6200-356	WHEEL SPINDLE
9	2	2530-155	1/4 X 1-1/4 ROLL PIN ZP

ASSEMBLY INSTRUCTIONS

STEP 1. Assemble the close wheels to the hub/bearing using the 5/16" x 1" carriage bolts and 5/16" flange lock nuts.

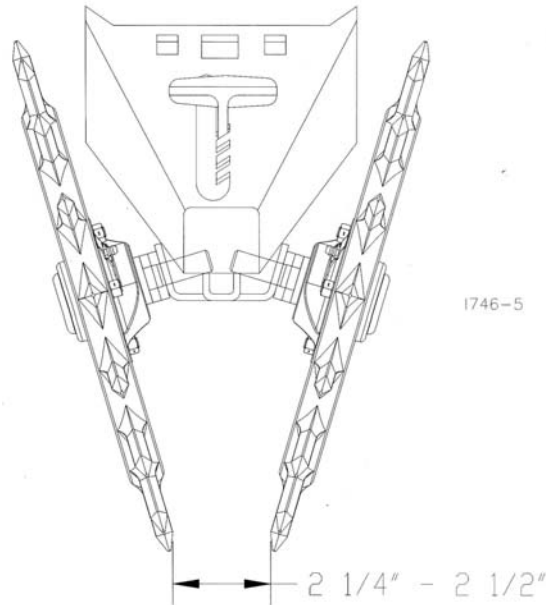


STEP 2. Attach the wheel assemblies to the close wheel arm.



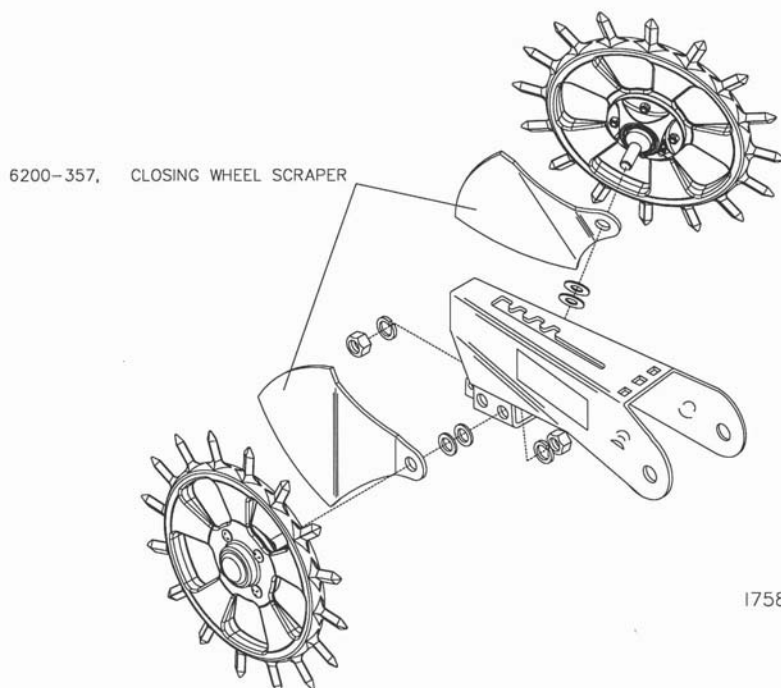
ASSEMBLY INSTRUCTIONS

STEP 3. Install the wheels, using the spacers as needed, so that the distance at the bottom of the wheels is approximately 2-1/4"-2-1/2".



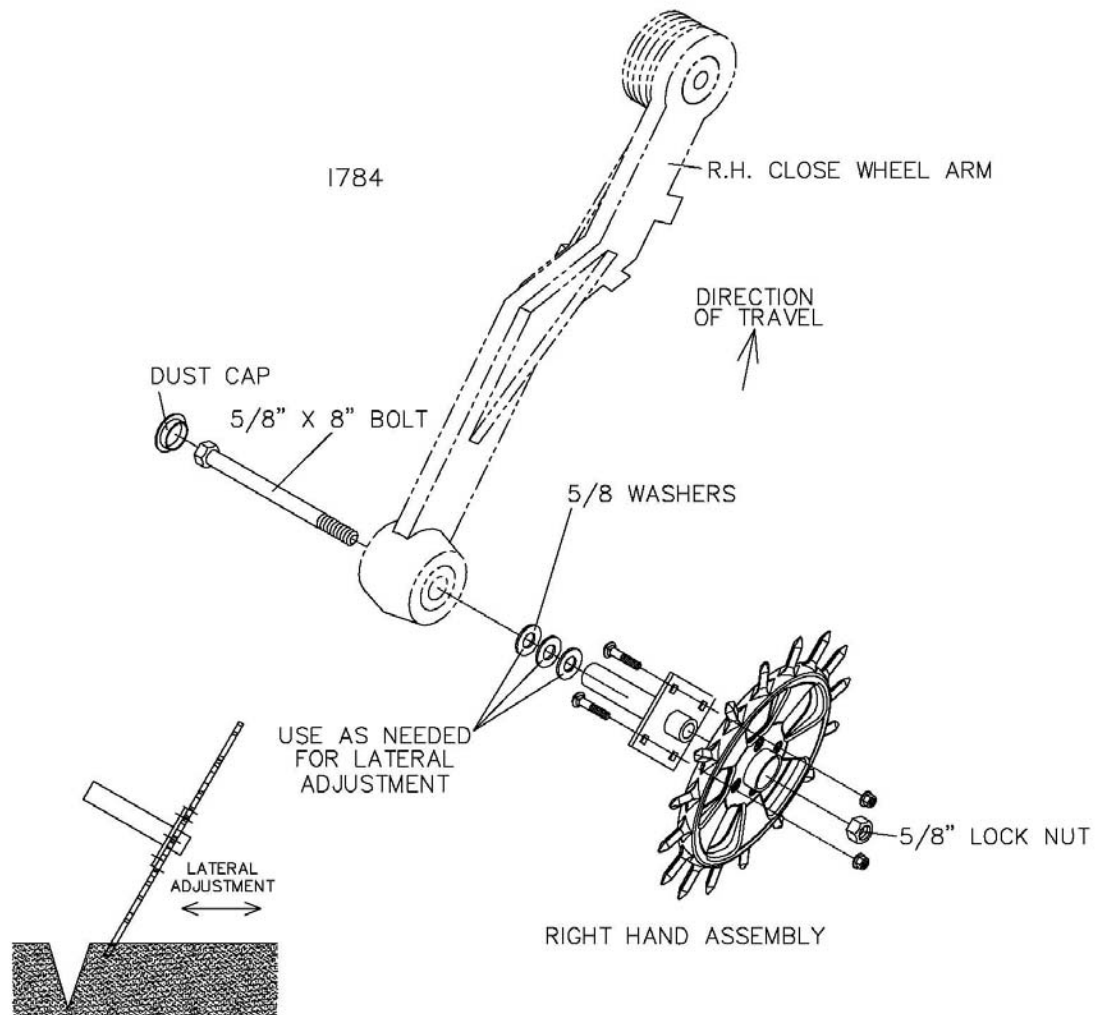
STEP 4. Adjust the closing wheel spring tension as necessary. If the seed trench is not being closed properly, increase closing wheel spring pressure. Closing wheels must not sink into the soil too deeply, the seed placement could be adversely affected, especially when planting shallow. If the closing wheels are applying too much pressure and the seed is being moved by the closing wheels, decrease closing wheel pressure. Light soils usually require less down pressure; heavy soils more down pressure.

6200-002, SCRAPER KIT FOR 6200-001



OPERATION

Attach the wheel assembly to the close wheel arm using a 5/8" x 8" bolt, washers, and 5/8" lock nut. **NOTE:** Use the washers as necessary for lateral adjustment of the closing wheel in relationship to the seed furrow. Then install the dust cap onto the close wheel arm.

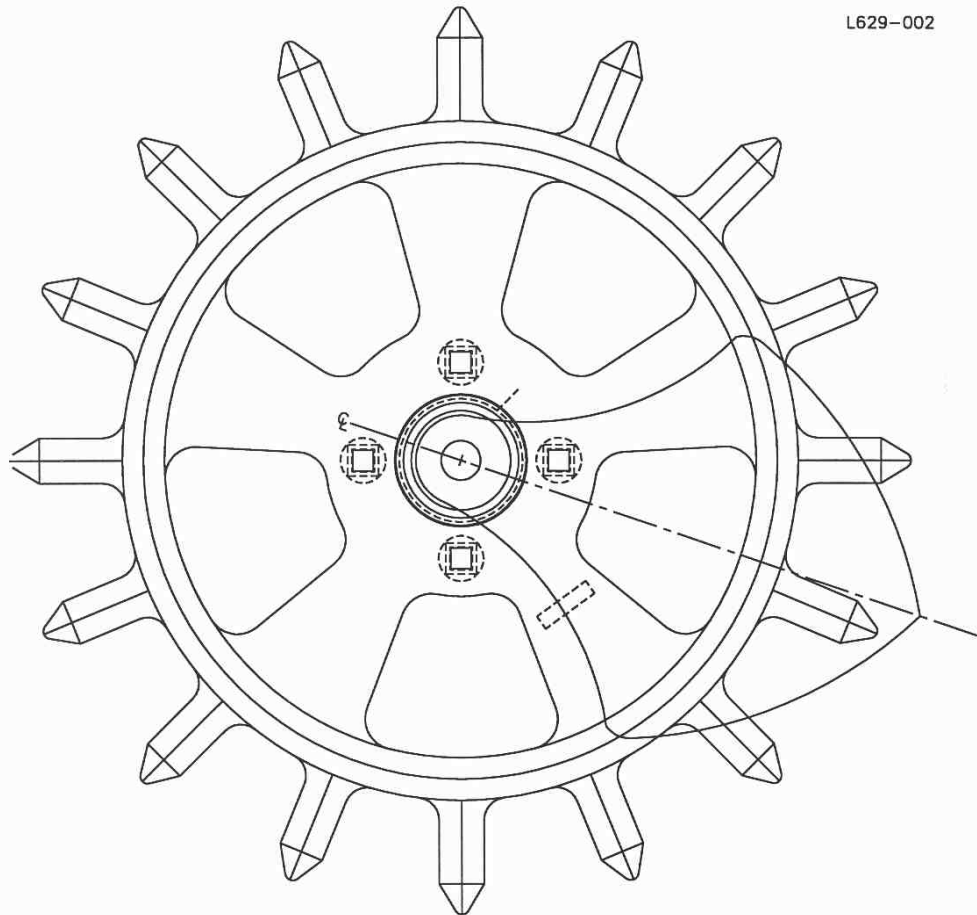


Lateral adjustment is important because the seed furrow may not be covered/closed if the closing wheel is too far from the seed furrow; or the seed placement will be effected if the close wheel is too close to the seed furrow.

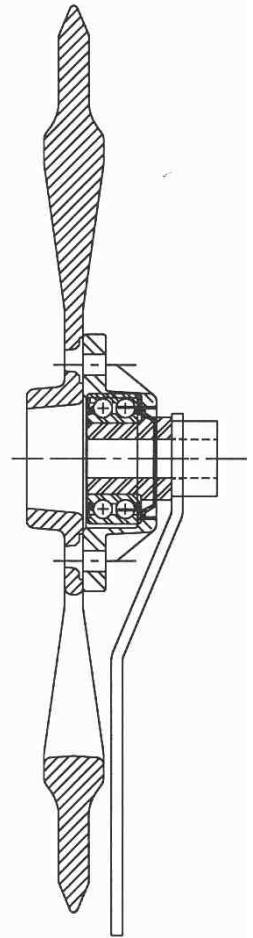
The 6200-011 Close Wheel is designed to crumble the sidewall not to "squeeze" the sidewall. For this reason it is important that the firming wheel is functioning properly and supplying adequate pressure on the seed that is being planted.

6200-002

CLOSING WHEEL SCRAPER SIDE VIEW



L629-002



← FORWARD TRAVEL

Our name Is getting known

Just a few years ago, Yetter products were sold primarily to the Midwest only. Then we embarked on a program of expansion and moved into the East, the South, the West and now north into Canada. We're even getting orders from as far away as Australia and Africa.

So, when you buy Yetter products . . .you're buying a name that's recognized. A name that's known and respected. A name that's become a part of American agriculture and has become synonymous with quality and satisfaction in the field of conservation tillage.

Thank you.

YETTER MANUFACTURING CO.
Colchester, IL 62326-0358 • 309/776-4111
Toll Free 800/447-5777
Fax 309/776-3222
Website: WWW.YETTERCO.COM
E-MAIL: INFO@YETTERCO.COM

2565-734_REV_A 10/09