



## 6150 SERIES MARKERS

# OPERATOR & SET-UP MANUAL

2565-376\_REV\_E 03/2014



**YETTER MANUFACTURING CO.**  
*FOUNDED 1930*

Colchester, IL 62326-0358  
Toll free: 800/447-5777  
309/776-3222 (Fax)

Website: [www.yetterco.com](http://www.yetterco.com)  
E-mail: [info@yetterco.com](mailto:info@yetterco.com)

# YETTER

## FOREWORD

You've just joined an exclusive but rapidly growing club.

For our part, we want to welcome you to the group and thank you for buying a Yetter product.

We hope your new Yetter products will help you achieve both goals-increase your productivity and increase your efficiency so that you may generate more profit.

This operator's manual has been designed into four major sections: Foreword, Safety Precautions, Installation Instructions and Parts Breakdown.



This **SAFETY ALERT SYMBOL** indicates important safety messages in the manual. When you see this symbol, be alert to the possibility of **PERSONAL INJURY** and carefully read the message that follows.

The word **NOTE** is used to convey information that is out of context with the manual text. It contains special information such as specifications, techniques and reference information of a supplementary nature.

The word **IMPORTANT** is used in the text when immediate damage will occur to the machine due to improper technique or operation. Important will

apply to the same information as specified by note only of an immediate and urgent nature.

It is the responsibility of the user to read the operator's manual and comply with the safe and correct operating procedure and to lubricate and maintain the product according to the maintenance schedule in the operator's manual.

The user is responsible for inspecting his machine and for having parts repaired or replaced when continued use of the product would cause damage or excessive wear to the other parts.

It is the user's responsibility to deliver his machine to the Yetter dealer who sold him the product for service or replacement of defective parts, which are covered by the warranty policy.

If you are unable to understand or follow the instructions provided in this publication, consult your local Yetter dealer or contact:

### **YETTER MANUFACTURING CO.**

309/776-4111

800/447-5777

309/776-3222 (FAX)

Website: [www.yetterco.com](http://www.yetterco.com)

E-mail: [info@yetterco.com](mailto:info@yetterco.com)

## WARRANTY

Yetter Manufacturing warrants all products manufactured and sold by it against defects in material. This warranty being expressly limited to replacement at the factory of such parts or products as shall appear to be defective after inspection. This warranty does not obligate the Company to bear cost of labor in replacement of parts. It is the policy of the Company to make improvements without incurring obligations to add them to any unit already sold. No warranty is made or authorized to be made, other than herein set forth. This warranty is in effect for one year after purchase.

Dealer \_\_\_\_\_

**Yetter Manufacturing warrants its own products only and cannot be responsible for damages to equipment on which mounted.**

## **SAFETY**

**A brief description of signal words that may be used in this manual:**

**CAUTION:** Used as a general reminder of good safety practices or to direct attention to unsafe practices.

**WARNING:** Denotes a specific potential hazard.

**DANGER:** Denotes the most serious specific potential hazard.



### **SAFETY PRECAUTIONS**

You can make your farm a safer place to live and work if you observe the safety precautions given. Study these precautions carefully and insist that those working with you and for you follow them.

Finally, remember this: someone's carelessness, neglect or oversight usually causes an accident.



### **WARNING**

Never clean, lubricate or adjust a machine that is in motion. Always lower or block the implement before performing service

If machine must be serviced in the raised position, jack or block it up to prevent it from accidentally falling and injuring someone.

Check clearance of markers from tractor cab or operator when not equipped with cab.

Do not allow riders on the tractor or implement.

Use speeds and caution dictated by the terrain being traversed. Do not operate on any slope steep enough to cause tipping or loss of control.

Read and understand the operator's manual and require all other persons who will operate the equipment to do the same.

Be familiar with all tractor and implement controls and be prepared to stop engine and implements quickly in an emergency.

Consult your implement and tractor operator's manual for correct and safe operating practices.

Beware of towed implement width and allow safe clearance.

**FAILURE TO HEED MAY RESULT IN PERSONAL INJURY OR DEATH.**

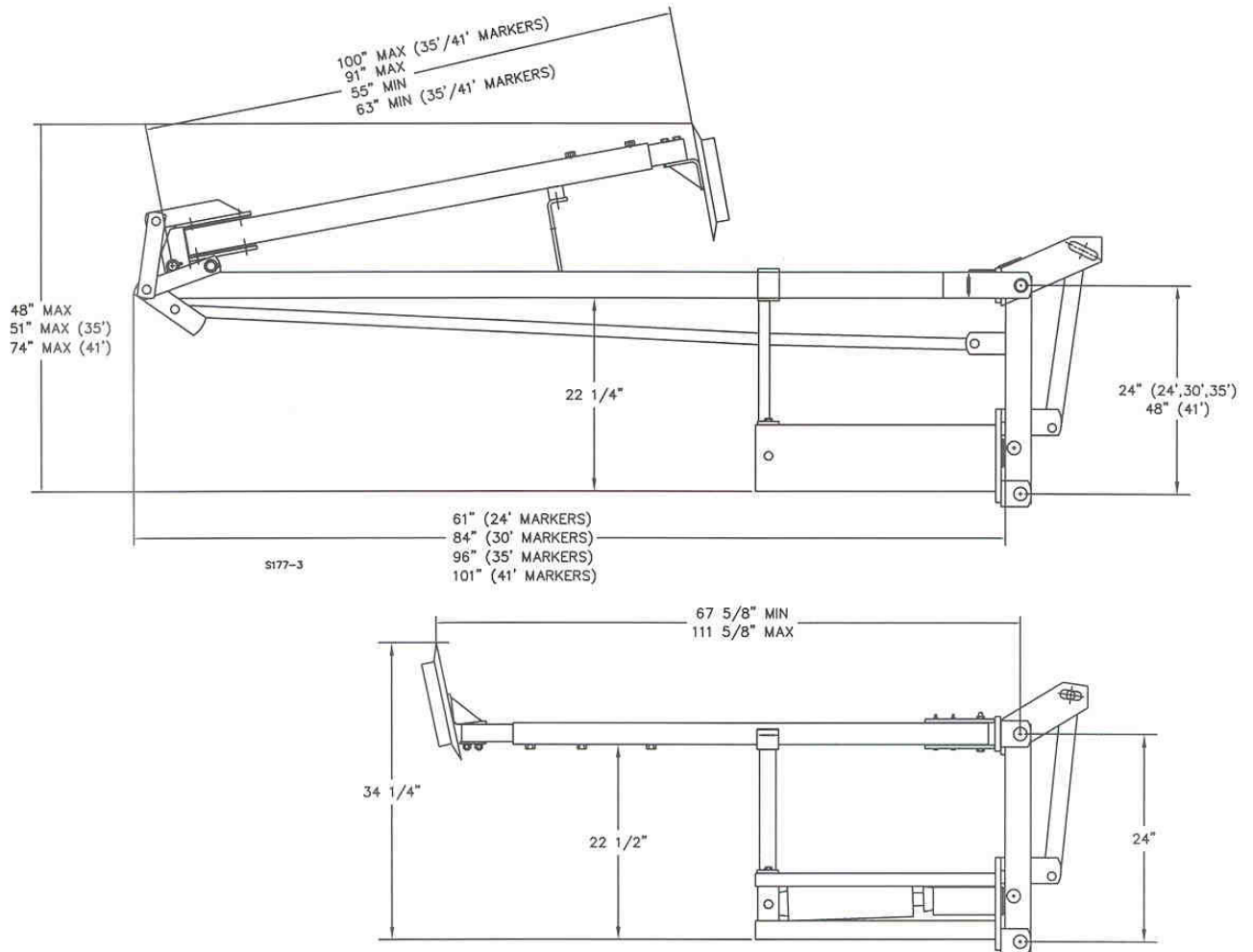
## MARKER APPLICATION CHART

| Yetter Part No. | Description   | Marker Reach |
|-----------------|---|--------------|
| 6150-115        | Bi-Fold Marker, 15-20 ft. for 15-20 ft. Drills, 4rN & 6rN Planters etc. | 87"-132"     |
| 6150-124        | Tri-Fold Marker, 24 ft. for 24 ft. Drills                               | 141"-171"    |
| 6150-130        | Tri-Fold Marker, 30 ft. for 30 ft. Drills, 8rW & 12rN Planters etc.     | 163"-193"    |
| 6150-135        | Tri-Fold Marker, 35 ft. for 35 ft. Implements                           | 193"-223"    |

### MOUNTING KITS

| PAGE |   | PAGE   |                                   |
|------|---|--------|-----------------------------------|
| 16.  | 6001-016 JD 1520                                    | 25,26. | 6001-191 JD 515 & 520             |
| 17.  | 6001-018 JD 455                                     | 27.    | 6001-195 IH 5200 & 5400           |
| 18.  | 6001-022 Tye Series V                               | 28.    | 6001-198 JD 750/1560/1590, 30 ft. |
| 19.  | 6001-026 7x7 Cultivator                             | 29.    | 6100-108 GP 1500 & 2000 Series    |
| 20.  | 6001-028 JD 750/1560/1590, Bi-Fold                  | 30.    | 6100-110 Planter                  |
| 21.  | 6001-031 JD 1850/1860/1890 w/o CCS                  | 31.    | 6150-090 MARKER MOUNT KIT         |
| 22.  | 6001-033 7x7/8x8 BAR                                | 32.    | 6150-091 White 6000/8000          |
| 23.  | 6001-042 IH 5500                                    | 33.    | 6150-101 DMI 4x6                  |
| 24.  | 6001-118 M & W, Marliss & Tye                       | 34.    | 6150-162 J.D. 1690/1890           |
|      | 6001-120 Great Plains<br>(Won't fit GP 3 sect. 30') | 35.    | 6150-165 6" Extension Kit         |
|      |   | 36.    | Extension Kits 6001-179, 6001-199 |

Various u-bolts and brackets are available for row crop planter applications.



## GENERAL INFORMATION

Yetter Drill Markers were designed to operate on grain drills and planters from 14 feet to 35 feet wide. For non-folding grain drills from 14 to 22 feet wide, bi-fold markers are used.

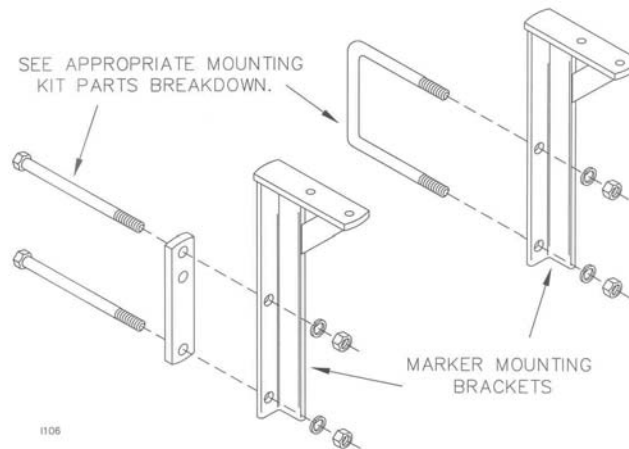
All Yetter Markers are hydraulically actuated. A sequence valve is provided to alternate automatically from left to right marker. After each raise cycle the valve switches hydraulic oil flow to the opposite marker.

Yetter markers were designed for hydraulic systems providing up to 2500 psi hydraulic pressure. For hydraulic systems that have variable flow control, this control may be used to adjust marker speed. It may be necessary to provide restrictors in the lines to reduce marker speed with some tractors.

## MOUNTING KIT INSTALLATION

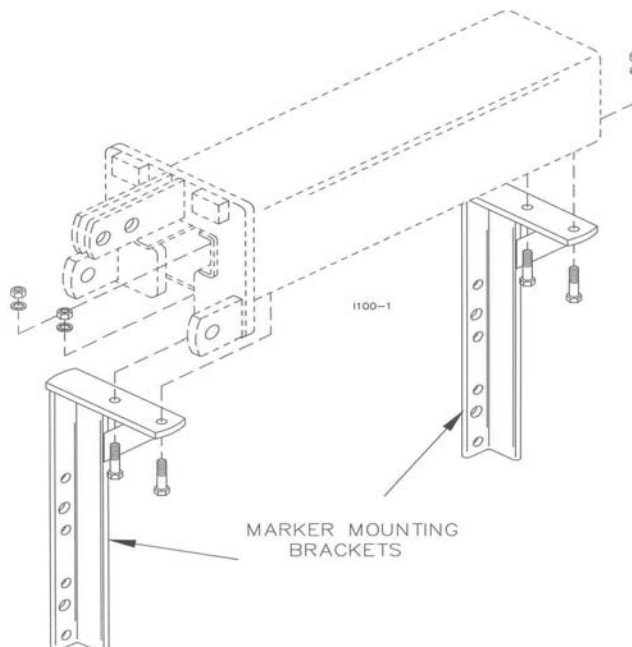
On Great Plains, M & W, Marliss, Tye, IH5200/5400 and JD 750/1560, assemble mounting brackets to front of drill frame as shown using hardware provided in the mounting kit for your particular type of drill. **See appropriate drawing and parts list.**

## MARKER INSTALLATION



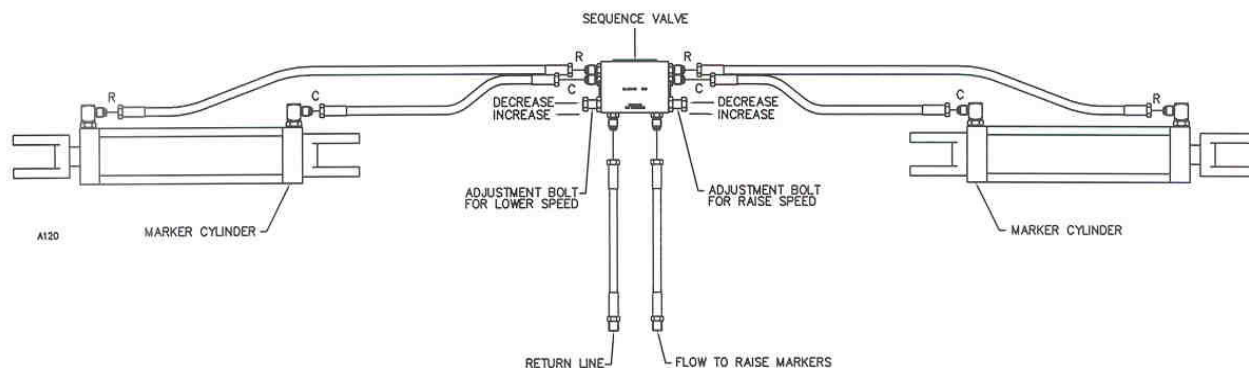
Mount marker base to mounting brackets using 1/2 x 1-3/4" cap screws, lock washers and nuts. Two sets of holes are provided in the marker base toward the outer end of the drill. Use the hole set that allows clearance of obstruction on the frame for your particular implement.

NOTE: If drill is equipped with a grass seeder attachment, it may be necessary to install a marker extension kit.



# INSTALLATION

## HYDRAULIC SET-UP FOR MARKERS



## HYDRAULIC INSTALLATION

### HYDRAULIC HOOK UP

**! DANGER:** Inspect and replace worn or frayed hydraulic hose. Keep all connections tight, escaping hydraulic fluid under pressure can have sufficient force to penetrate the skin and cause serious injury. Fluid escaping from a small hole can almost be invisible. Use a piece of cardboard or wood rather than hands to search for suspected leaks. Failure to heed may result in personal injury or death.

**! WARNING:** Lower the cart to the ground, and remove any pressure in the lines before opening the hydraulic lines to install the marker hoses.

1. Connect the port on the front of the sequence valve marked "LOWER" to the tractor or the return side of the drill lift system. If the markers are to lower with a Yetter Coulter Cart, connect this LOWER port to the return side of the cart hydraulic system. This is the bottom port of the right-hand (slave) cart cylinder.

2. **IMPORTANT** – Be VERY careful when first actuating markers with hydraulic pressure. Cycle hydraulics several times only slightly lifting marker off stops. Apply pressure for several seconds in raise position to purge air from hydraulic cylinders. After several cycles, the marker should be completely lowered. When lowering the first time proceed VERY slowly.

**NOTE:** Air left in the system will compress when pressurized, this may cause erratic and violent damaging motion of the marker arms.

3. Measure the time required for each marker to fold and unfold. If the markers are operating too fast, they must be slowed down to provide adequate life. Bi-fold markers should take more than 4 seconds to fold and more than 4 seconds to unfold. Tri-fold markers should take more than 8 seconds to fold and more than 8 seconds to unfold.

4. Some tractors have a provision to control remote cylinder speed with an adjustment near the remote cylinder ports. If the markers are actuated with a separate tractor valve this adjustment is available.

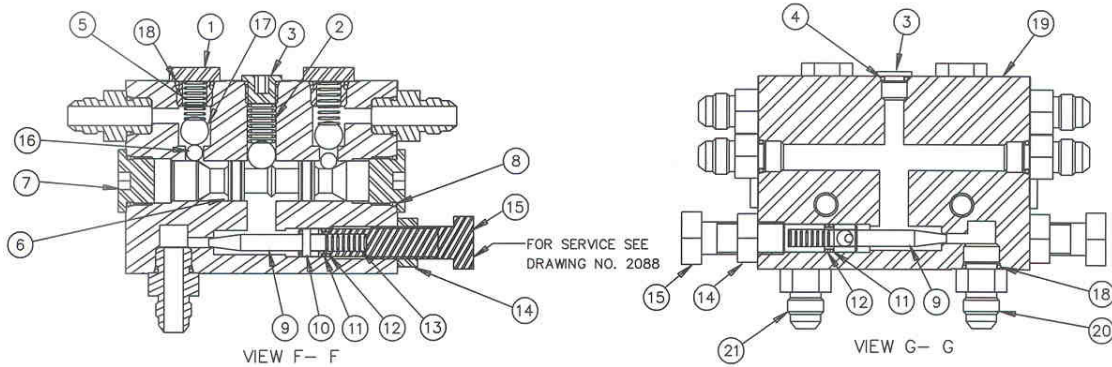
5. Restricted fittings are provided in all tri-fold markers to prevent damage from folding and unfolding too fast. If markers are too slow drill out the restrictor fitting using a 1/16" drill bit.

6. Adjustable restrictors are also provided in the sequence valve. These are adjusted with the bolts and jam nuts on each side of the sequence valve. Adjustments of the raise speed are made with the bolt on the left side of the valve with "RAISE" stamped vertically above it. Adjustments of the lowering speed are made with the bolt on the right side of the valve with "LOWER" stamped vertically beneath it.

7. Adjustments are made with these bolts by screwing them clockwise into the valve to reduce operating speed or by screwing them counterclockwise to increase operating speed. Adjustments should be made in small increments, 1/6 of turn or less at a time, being sure to retighten the jam nut.

**! WARNING:** On drills and planters with switch operated hydraulic valves, a new switch operated hydraulic valve should be installed to operate the markers. If the markers are plumbed with an existing switch operated valve they may extend or retract unexpectedly when you press the switch, resulting in damage to equipment or property or possible injury to yourself or others in the vicinity.

## SERVICE MARKER SEQUENCE VALVE



| ITEM | QTY. | PART NUMBER                   | DESCRIPTION                  | ITEM         | QTY. | PART NUMBER | DESCRIPTION                  |                          |
|------|------|-------------------------------|------------------------------|--------------|------|-------------|------------------------------|--------------------------|
| 1    | 2    | 1430                          | PLUG, HEX. HEAD              | 11           | 2    | 1100-011    | O-RING                       |                          |
| 2    | 1    | 1099                          | SPRING, DETENT               | 10           | 2    | 1217        | PIN, SPRING - Ø.125          |                          |
| 3    | 2    | 1132-05                       | PLUG, SAE O-RING- HEX.SOCKET | 11           | 2    | 1100-011    | O-RING                       |                          |
| 4    | 2    | 1402-905                      | O-RING                       | 12           | 2    | 1089-011    | BACK-UP RING                 |                          |
| 5    | 2    | 1042                          | SPRING                       | 13           | 2    | 1211        | SPRING, COMPRESSION          |                          |
| 6    | 1    | SELECT SPOOL FOR PROPER SPEED |                              | 14           | 2    | 1218        | NUT, HEX.JAM, ZN-YEL. PLT'D. |                          |
|      |      | SPOOL NO.                     | ORIFICE                      | ASSEMBLY NO. | 15   | 2           | 1180                         | SCREW, ADJ. FLOW CONTROL |
|      |      | 5027                          | .047                         | 4129-047     | 16   | 2           | 1087-250                     | BALL, CHROMIUM STEEL     |
|      |      | 2153                          | .055                         | 4129-055     | 17   | 3           | 1087-.437                    | BALL, CHROMIUM STEEL     |
|      |      | 2136                          | .062                         | 4129-062     | 18   | 8           | 1402-906                     | O-RING                   |
|      |      | 2154                          | .076                         | 4129-076     | 19   | 1           | 3161                         | BODY, SEQUENCE VALVE     |
| 7    | 2    | 1132-08                       | PLUG,SAE O-RING-HEX.SOCKET   | 20           | 6    | 1092-06     | FITTING, STRAIGHT CONN.      |                          |
| 8    | 2    | 1402-908                      | O-RING                       | 21           | 6    | 1219-06     | CAP,VINYL-FOR STORE AND SHIP |                          |
| 9    | 2    | 1179                          | NEEDLE, FLOW CONTROL         | 22           | 0    | 2088        | ASM, NEEDLE                  |                          |
| 10   | 2    | 1217                          | PIN, SPRING - Ø.125          | 23           | 0    | 1223        | KIT, SEAL                    |                          |

### SERVICE REPAIR KIT – 2515-349

#### DISASSEMBLY and ASSEMBLY

If markers do not sequence, clean dirt from valve spool bore (6). If markers tend to creep downward, check for dirt, nicks/scratches in ball check valve areas (16).

Note: Be sure the hoses are connected to the correct ports before disassembling the valve for cleaning or repair. (See schematics.)

#### Disassembly:

1. Remove hex head plugs (1), springs (2), and steel balls (16 & 17).
2. Remove plug (3), spring (2), steel ball (17).
3. Remove plugs (7) from each end of body.

Important! Be sure plugs, springs and balls (Step 1 and 2) are removed before attempting to remove spool.

4. Carefully remove spool (6) from valve body.
5. Remove flow restrictor assembly (15) from valve body.

#### Inspection:

1. Clean spool and restrictors in solvent.  
Note: Restrictor disassembly is not required for cleaning.
2. Clean valve body after checking exterior for signs of o-ring leakage.
3. If spool is nicked or scratched, remove with crocus cloth. Spool must slide freely in bore.
1. If ball seats are nicked or scratched, install larger ball against seat, tap ball with brass rod to "seat" ball.

Note: Remove spool for this procedure.

2. Inspect o-rings. Replace if necessary.

#### Assembly:

1. Apply clean hydraulic fluid to threads, o-rings, spool, valve bore. Reassemble in reverse order of disassembly.
2. Open restrictors one turn minimum.
3. Install valve on planter and readjust marker operating speed with restrictors.

#### Marker Operation

Markers fail to sequence

Valve spool stuck in sequence valve

Disassemble valve and clean spool

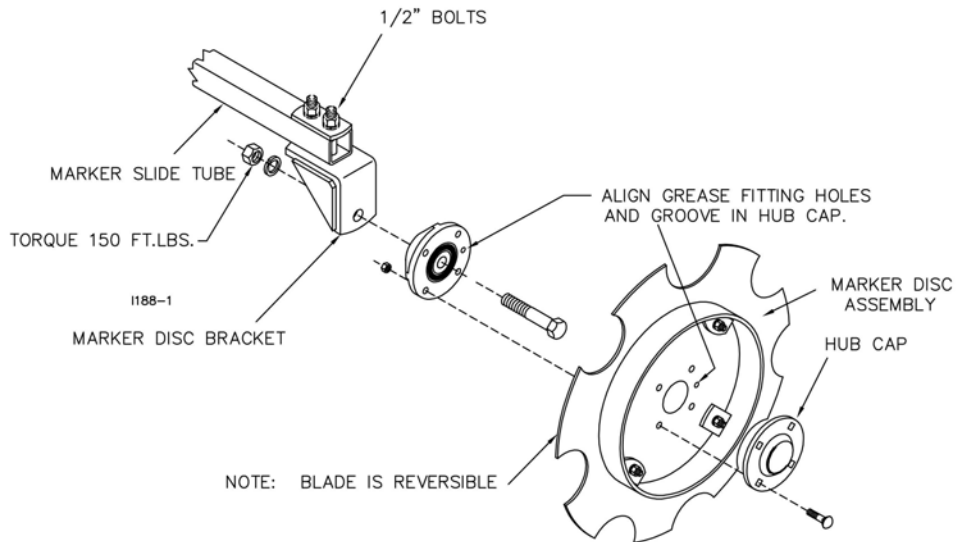
Raised marker slowly lowers

Check ball not seated in

Disassemble valve and re-seat ball

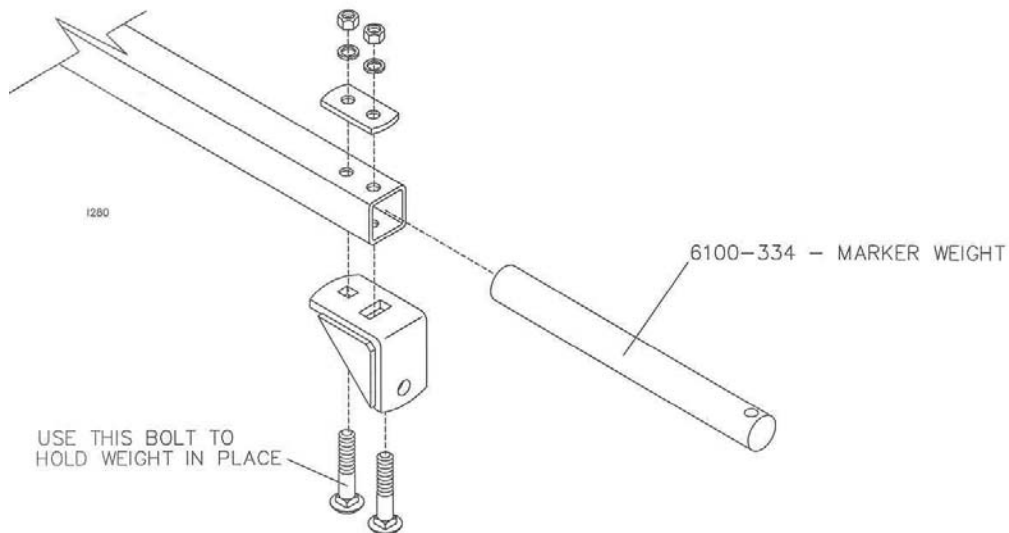
## MARKER DISC ASSEMBLY

1. Assemble the marker disc assembly to the hub and bearing assembly, using a 5/16 x 1-1/4" carriage bolts and locknuts then tighten.
2. Assemble hub and bearing assembly to the marker disc bracket using D-Bolt, 5/8" nut and lock washer then tighten. Torque 150 ft./lbs.
3. Loosen the two 1/2" bolts on the outer end of the marker slide tube and adjust the marker disc brackets to desired angle and retighten.
4. Fill hub and bearing assembly with general-purpose grease.



REVISED 02/01/12

## OPTIONAL 6100-334 – MARKER WEIGHT

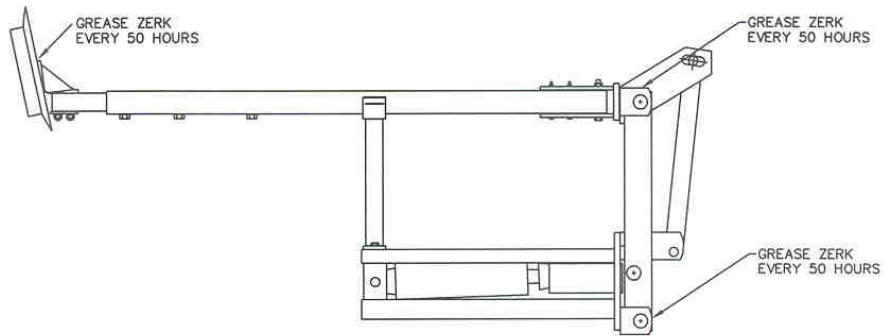
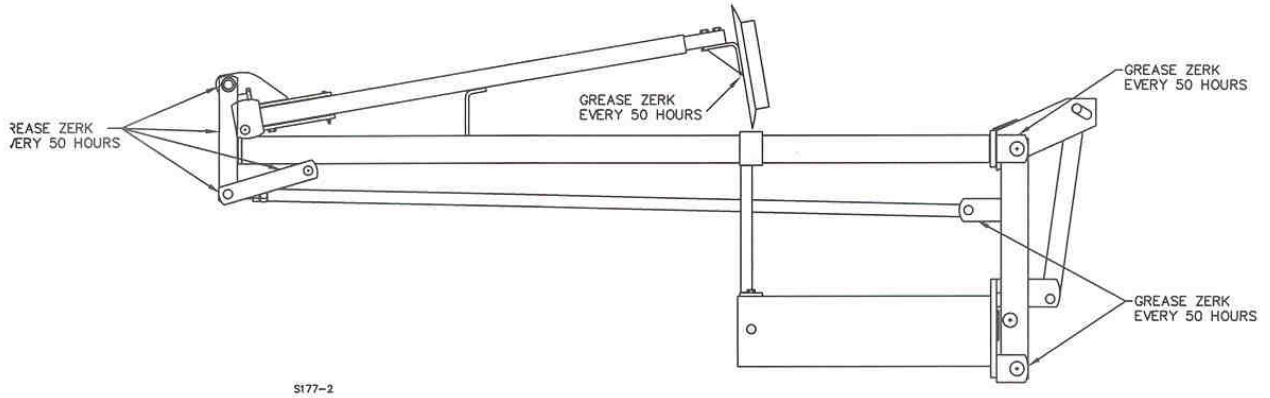




# MAINTENANCE

## MARKER

There are three grease zerks on the bi-fold marker and eight grease zerks on the tri-fold marker. (See drawing). Grease every 50 hours. Grease the hub on each marker disc assembly every 50 hours.



# MAINTENANCE

## BEARING ASSEMBLY AND LUBRICATION

### Practice Safety

Understand and practice safe service procedures before doing work. Follow ALL the operating, maintenance and safety information in the equipment operator manual. Clear the area of bystanders, especially small children, when performing any maintenance or adjustments. Keep work area clean and dry. Use adequate lighting for the job. Use only tools, jacks and hoists of sufficient capacity for the job.

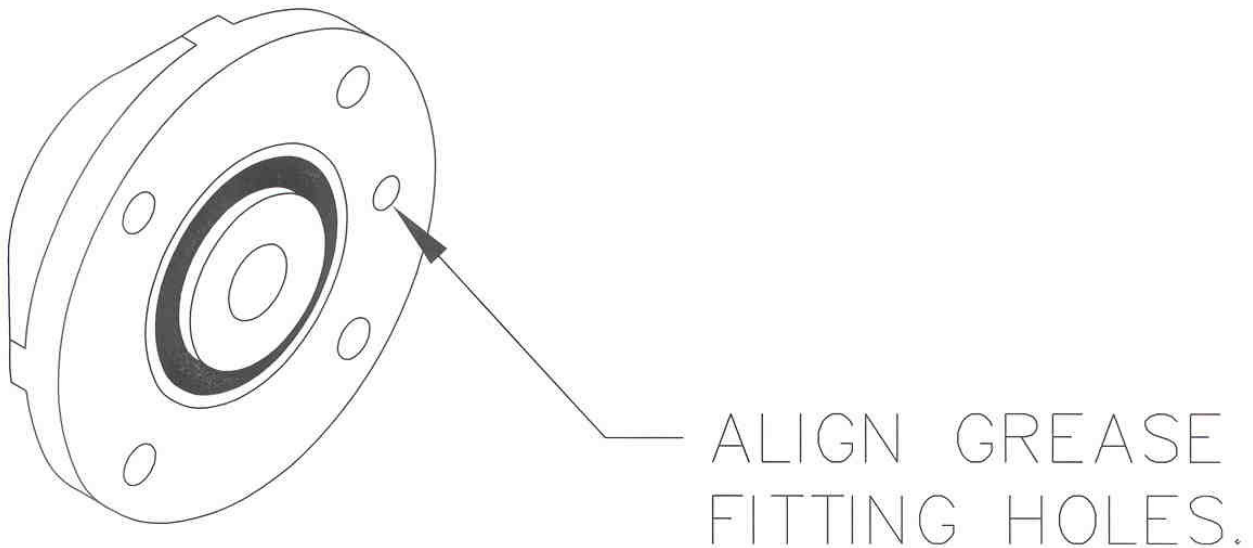
Never lubricate, service, or adjust machine while it is moving. Keep hands, feet, and clothing from power-driven moving and rotating parts. Disengage all power and operate controls to relieve pressure. Lower equipment to the ground and stop the engine. Remove the key. Wait for all moving parts to stop before servicing, adjusting, repairing or unplugging.

Securely support any machine elements with blocks or safety stands that must be raised for service work.

Keep all parts in good condition and properly installed. Fix damaged equipment immediately. Replace worn or broken parts. Remove any buildup of grease, oil, or debris.

Make sure all guards are in place and properly secured when maintenance work is completed.

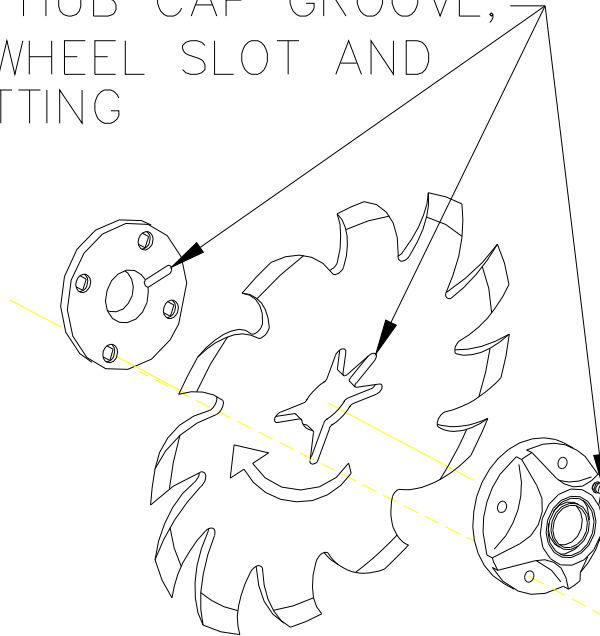
### Assembly



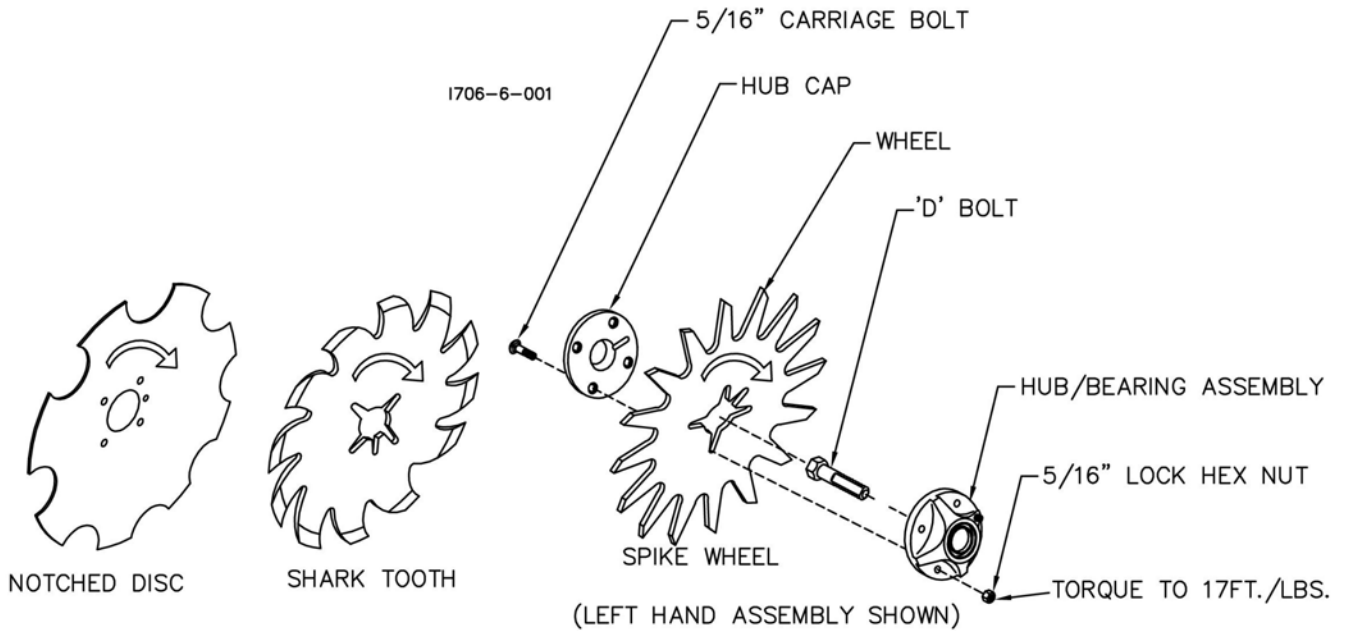
I190-1

# MAINTENANCE

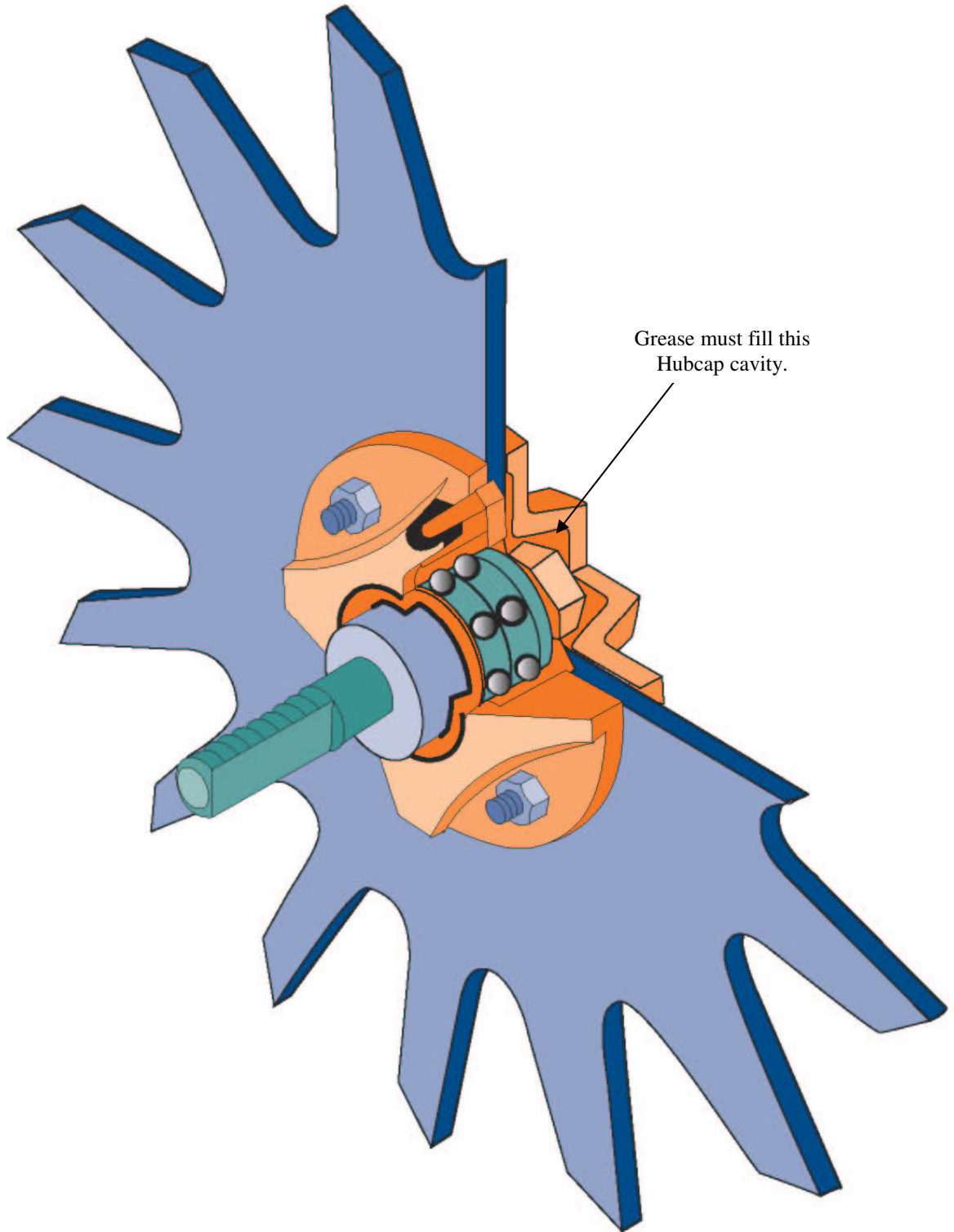
ALIGN THE HUB CAP GROOVE,  
WITH THE WHEEL SLOT AND  
GREASE FITTING



NOTE: Be certain to align the grease fitting with the slot in the wheel and the hubcap so that the grease can flow freely.



# MAINTENANCE



# MAINTENANCE

## Lubrication



**CAUTION:** To help prevent serious injury or death to you or others caused by unexpected movement, service machine on a level surface. Lower machine to ground or sufficiently lock or block raised machine before servicing. If machine is connected to tractor, engage parking brake and place transmission in "PARK", shut off engine and remove key. If machine is detached from tractor, block wheels and use shop stands to prevent movement.



**CAUTION:** Do not clean, lubricate, or adjust machine while in motion.

Use grease based on NLGI consistency numbers and the expected air temperature range during the service interval.

Use a **multi-purpose lithium, water resistant, moderate speed, and NLGI grade #2** grease.

Other greases may be used if they meet the following **NLGI Performance**

**Classification: GC-LB**

**IMPORTANT:** Some types of grease thickener are not compatible with others. Consult your grease supplier before mixing different types of grease.

## Alternative Lubricants

Conditions in certain geographical areas may require special lubricants and lubrication practices which do not appear in the operator's manual. If there are any questions, consult Yetter Manufacturing Co. to obtain latest information and recommendation.

| PART #   | DESCRIPTION  | OUNCES OF GREASE |
|----------|--|------------------|
| 2967-404 | 13" TAPER TOOTH R.M. WHEEL                             | 1.12 OZ          |
| 2967-602 | 13" SHARK TOOTH R.M. WHEEL                             | 1.12 OZ          |
| 2967-186 | FLOATER WHEEL KIT W/R.M. WHEEL                         | 2.08 OZ          |
| 2967-596 | HEAVY DUTY OR BEVEL R.M. WHEEL W/<br>FLOATER WHEEL KIT | 2.40 OZ          |

## Storing Lubricants

Your machine can operate at top efficiency only if clean lubricants are used.

Use clean containers to handle all lubricants.

Store them in an area protected from dust, moisture and other contaminants.

## MAINTENANCE

### Lubrication Symbols



Lubricate with grease at hourly interval indicated on symbol.

### Lubrication Intervals



**IMPORTANT:** The recommended service intervals are based on normal conditions; severe or unusual conditions may require more frequent lubrication.

Perform each lubrication and service procedure at the beginning and end of each season.

Clean grease fittings before using grease gun, to avoid injecting dirt and grit into the bearing. Replace any lost or broken fittings immediately. If a fitting fails to take grease, remove and clean thoroughly, replace fitting if necessary. Also check for failure of adjoining parts.

### BEARING REPLACEMENT INSTALLATION

1. When assembling the spoke wheels, bearing assembly and hubcap, be sure to align the grease transfer hole in the spoke wheel with the groove in the hubcap and hole in the hub to allow grease passage.
2. Install/assemble the wheels, hubs and caps.
3. Grease the wheel/hub/bearing assembly.

# MAINTENANCE

## Storing the Equipment

Store the machine in an area away from human activity

Store machine in RAISED position.

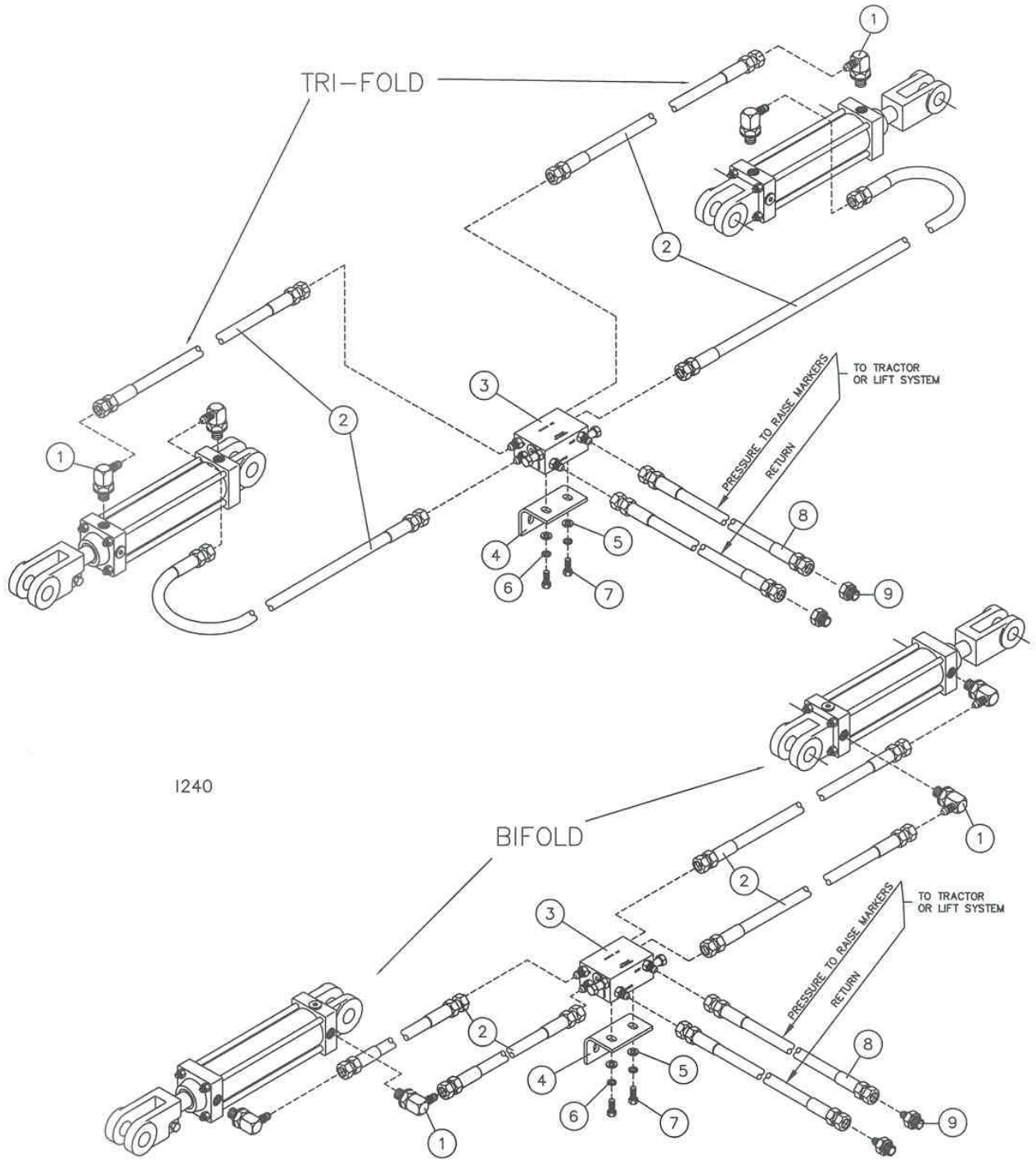
Install service locks on all wheel cylinders.

At the end of the season, the machine should be thoroughly inspected and prepared for storage.

Repair or replace any worn or damaged components to prevent down time at the start of the next season. Store machine under cover with all parts in operating condition.

- Clean machine thoroughly to remove all dirt, debris and crop residue, which would hold moisture and cause rusting.
- Inspect machine for worn or broken parts. See your Yetter Farm Equipment dealer during the off-season so that parts or service can be acquired when machine is not needed in the field.
- Lubricate bearings as outlined in the Lubrication section
- Paint all parts which are chipped or worn and require repainting.
- Store machine in a clean, dry place with the planting unit out of the sun.
- If the machine cannot be stored inside, cover with a waterproof tarpaulin and tie securely in place.
- Do not allow children to play on or around the machine

# PARTS IDENTIFICATION



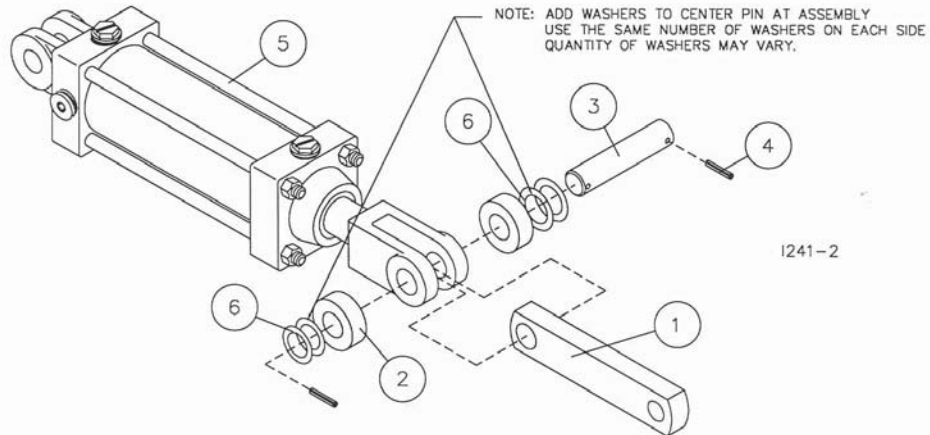
1240

| KEY | QTY. | PART NO. | DESCRIPTION   |
|-----|------|----------|---|
| 1   | 4    | 2515-324 | 90°, 3/4 SAE TO -6 JIC                              |
|     | 4    | 2515-330 | 90°, REST., 3/4 SAE TO -6 JIC (TRI-FOLD)            |
| 2   | 4    | 2515-366 | HOSE, 1/4 X 110" W/-6 JIC ENDS (15' JD750)          |
|     | 4    | 2515-367 | HOSE, 1/4 X 135" W/-6 JIC ENDS (15'-20', 20' JD750) |
|     | 4    | 2515-371 | HOSE, 1/4 X 180" W/-6 JIC ENDS (24')                |
|     | 4    | 2515-373 | HOSE, 1/4 X 220" W/-6 JIC ENDS (30')                |
| 3   | 1    | 2515-314 | ADJUSTABLE SEQUENCE VALVE                           |
| 4   | 1    | 6001-425 | SEQUENCE VALVE BRACKET (BENT)                       |
| 5   | 2    | 2526-251 | 3/8 STD. FLATWASHER ZP                              |
| 6   | 2    | 2525-251 | 3/8 MED. LOCKWASHER ZP                              |
| 7   | 2    | 2502-237 | 3/8-16 X 1 HHCS GR .5 ZP                            |
| 8   | 2    | 2515-366 | HOSE 1/4 X 110" W/-6 JIC ENDS (15' JD750)           |
|     | 2    | 2515-367 | HOSE, 1/4 X 135" W/-6 JIC ENDS (20', 20' JD750)     |
| 9   | 2    | 2515-327 | ADAPTOR, 3/4 SAE TO -6 JIC (JD750 ONLY)             |



# PARTS IDENTIFICATION

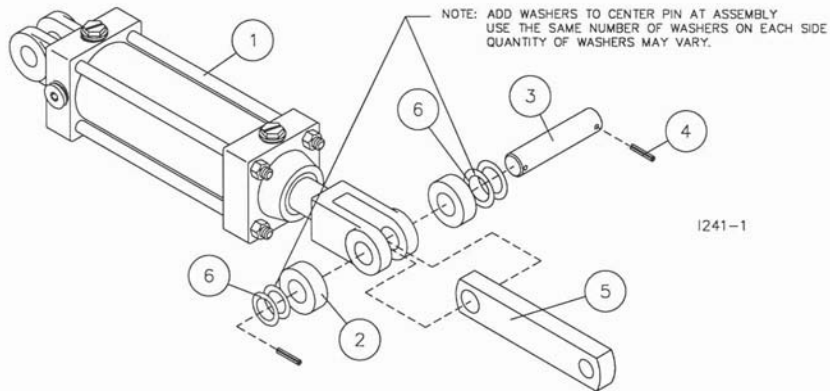
## 3" & 3-1/2" CYLINDER ASSEMBLY



6150-140 - 3" CYLINDER ASSEMBLY 15'-20'  
 6150-145 - 3" CYLINDER ASSEMBLY 24'-30'  
 6150-146 - 3-1/2" CYLINDER ASSEMBLY 35'

| DET | QTY | PART NO. | DESCRIPTION                           |
|-----|-----|----------|---------------------------------------|
| 1   | 1   | 6150-362 | CYLINDER LINK, 1" THICK               |
| 2   | 2   | 6001-368 | CYLINDER ROLLER                       |
| 3   | 1   | 6001-348 | CYLINDER ROLLER PIN                   |
| 4   | 2   | 2530-108 | 3/16" X 1-1/2" ROLL PIN ZP            |
| 5   | 1   | 2515-337 | 3" X 8" CYLINDER (SAE)                |
|     | 1   | 2515-375 | 3" X 8" CYLINDER (SAE) 24'&30' MODELS |
|     | 1   | 2515-391 | 3-1/2" X 8" CYLINDER (SAE) 35' MODEL  |
|     | EA  | 2515-338 | SEAL KIT, 3" CYLINDER                 |
|     | EA  | 2515-382 | SEAL KIT, 3 1/2" CYLINDER             |
| 6   | 4   | 2527-564 | WASHER, 1"ID X1-1/2"OD X14GA          |

## 4" CYLINDER ASSEMBLY



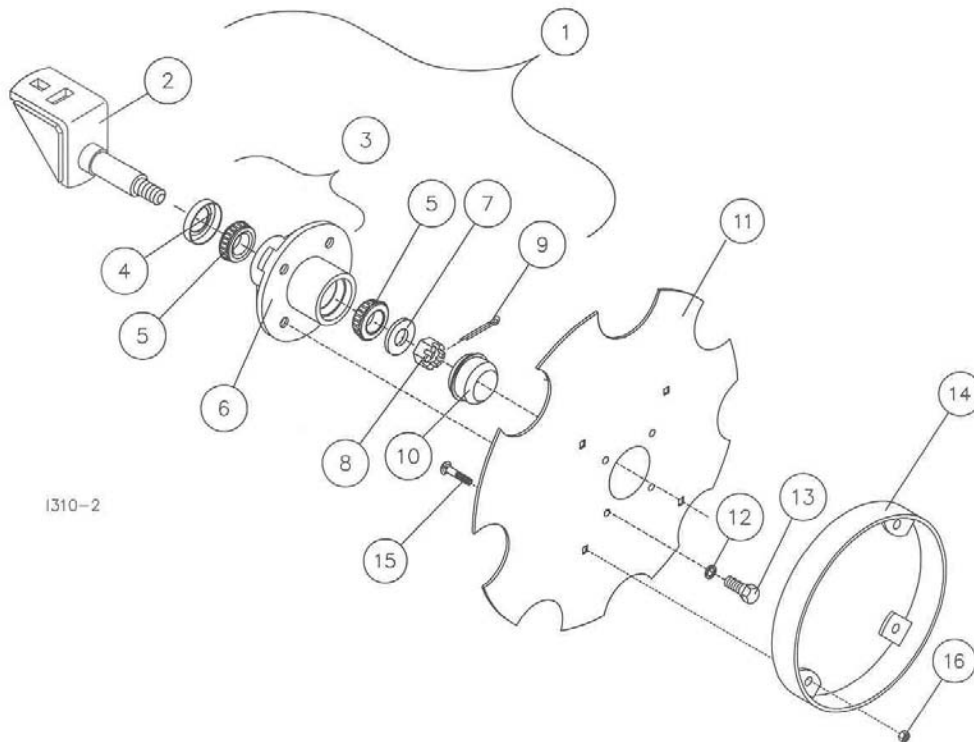
6150-129 4" CYLINDER ASSEMBLY 41'

| DET | QTY | PART NO. | DESCRIPTION                           |
|-----|-----|----------|---------------------------------------|
| 1   | 1   | 2515-822 | ASAE 4" X 8" CYL (SAE)                |
|     | EA. | 2515-823 | SEAL KIT, 4" CYLINDER                 |
| 2   | 2   | 6001-524 | 2-1/2" OD CYLINDER ROLLER ZYD         |
| 3   | 1   | 6150-457 | 1-1/4"OD CYLINDER PIN ZYD             |
| 4   | 2   | 2530-153 | 1/4" X 2" ROLL PIN ZP                 |
| 5   | 1   | 6150-427 | CYLINDER LINK 1" THICK                |
| 6   | 4   | 2526-561 | WASHER, 1-17/64"ID X 1-7/8"OD X 14 GA |

# PARTS IDENTIFICATION

## 6150-118 - HEAVY DUTY DISC KIT W/DEPTH BAND

| KEY | QTY. | PART NO. | DESCRIPTION  |
|-----|------|----------|--|
| 1   | 1    | 6150-133 | HUB & BRACKET ASSEMBLY<br>(INCLUDES NO. 2,3,5,7,8,9, and 10) |
| 2   | 1    | 6150-221 | HD MARKER BRACKET W.A.                                       |
| 3   | 1    | 6600-160 | HUB SUB ASSEMBLY<br>(INCLUDES NO. 4,5, and 6)                |
| 4   | 1    | 2550-054 | SEAL, CR #12437  |
| 5   | 2    | 2550-053 | 1 1/16 BEARING L44649  |
| 6   | 1    | 6600-161 | HUB WITH CUPS<br>(INCLUDES 2 CUPS (WILTON #L46610)           |
| 7   | 1    | 2570-197 | WASHER, 1 1/2 O.D. X 13/16 I.D.                              |
| 8   | 1    | 2520-503 | 3/4-16 SLOTTED HEX NUT BLACK                                 |
| 9   | 1    | 2531-106 | 3/16 X 1-3/4 COTTER PIN BLACK                                |
| 10  | 1    | 2570-196 | HUB CAP  |
| 11  | 1    | 6001-609 | .138 X 16" NOTCH MARKER DISC                                 |
| 12  | 4    | 2525-352 | 1/2 MED LOCK WASHER ZYD                                      |
| 13  | 4    | 2502-344 | 1/2-20 X 1 HHCS GR 5 ZYD                                     |
| 14  | 1    | 6150-253 | HD DEPTH CONTROL BAND W.A.                                   |
| 15  | 4    | 2505-205 | 5/16-18 X 3/4 CAR BLT GR 5 ZYD                               |
| 16  | 4    | 2520-205 | 5/16-18 LOCK HEX NUT ZYD                                     |



1310-2

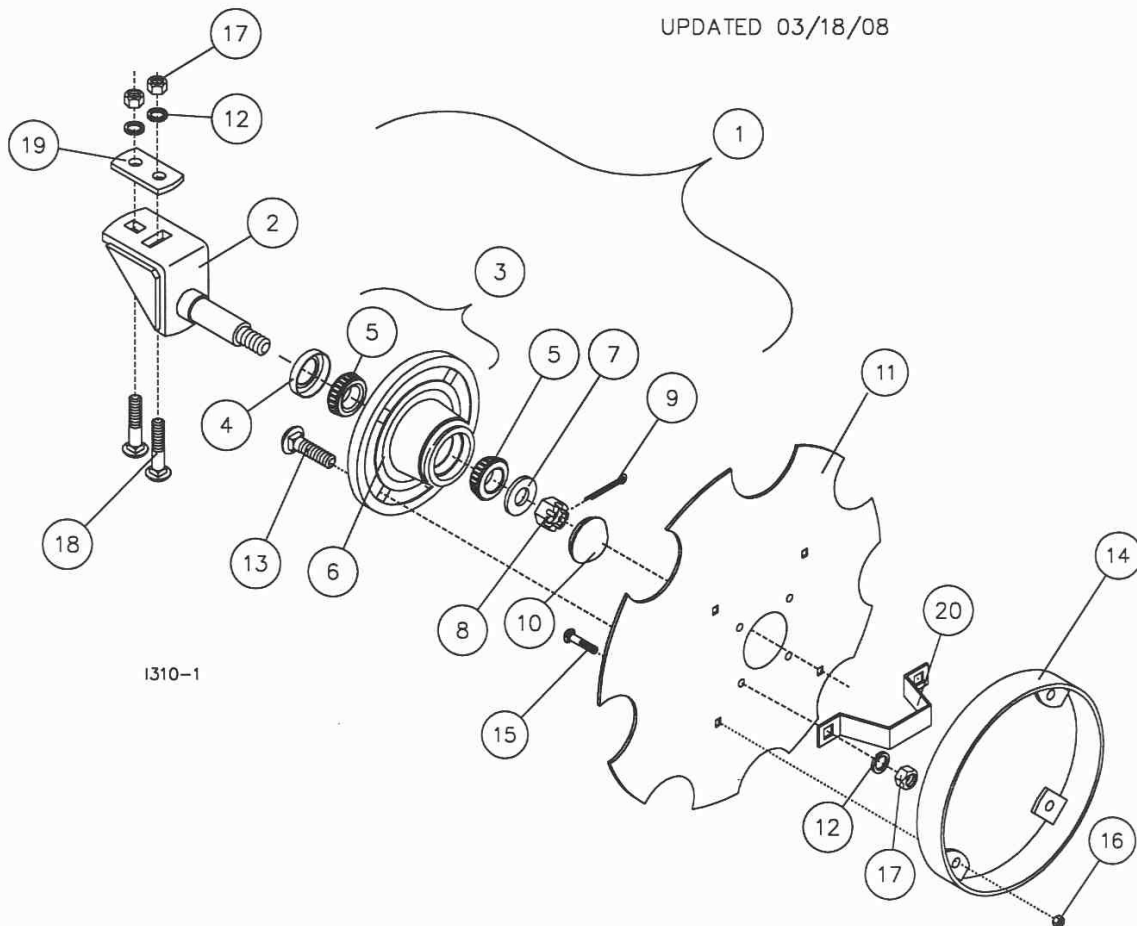
MANUFACTURED 1/95 - 12/00

# PARTS IDENTIFICATION

## 6150-155 HEAVY DUTY DISC KIT W/DEPTH BAND

| Key | Qty | Part No. | Description   |
|-----|-----|----------|---|
| 1   | 1   | 6150-153 | HUB & BRACKET ASSY<br>(INCLUDES # 2,3,5,7,8,9 & 10) |
| 2   | 1   | 6001-294 | HD MARKER BRACKET W.A.                              |
| 3   | 1   | 2900-102 | HUB SUB ASSEMBLY<br>(INCLUDES # 4,5 & 6)            |
| 4   | 1   | 2550-066 | TRIPLE LIP SEAL, NTI #1812-4                        |
| 5   | 2   | 2550-027 | CONE, LM67048                                       |
| 6   | 1   | 2900-105 | HUB PRESSED ASSEMBLY                                |
| 7   | 1   | 2526-449 | 5/8 FLATWASHER, 1/4 +/- .010 THK.                   |
| 8   | 1   | 2520-469 | 5/8-11 SLOTTED HEX NUT ZP.                          |
| 9   | 1   | 2531-102 | 1/8 X 1 1/4 COTTER PIN BLACK                        |
| 10  | 1   | 2570-375 | HUB CAP, WILTON #909902                             |
| 11  | 1   | 2571-151 | .138 X 16" NOTCH DISC W/DEPTH BAND HOLES            |
| 12  | 6   | 2525-352 | 1/2 MED LOCKWASHER ZP                               |
| 13  | 4   | 2505-344 | 1/2-13 X 1-3/4 CAR BLT GR 5 ZP                      |
| 14  | 1   | 6150-253 | HD DEPTH CONTROL BAND W.A.                          |
| 15  | 4   | 2505-205 | 5/16-18 X 3/4 CAR BOLT GR. 5 ZP                     |
| 16  | 4   | 2520-205 | 5/16-18 LOCK HEX NUT ZP                             |
| 17  | 6   | 2520-352 | 1/2-13 HEX NUT ZP                                   |
| 18  | 2   | 2505-351 | 1/2-13 X 4 CAR. BOLT GR. 5 ZP                       |
| 19  | 1   | 6001-481 | CLAMP PLATE   |
| 20  | 1   | 2987-301 | HUB CAP RETAINER                                    |

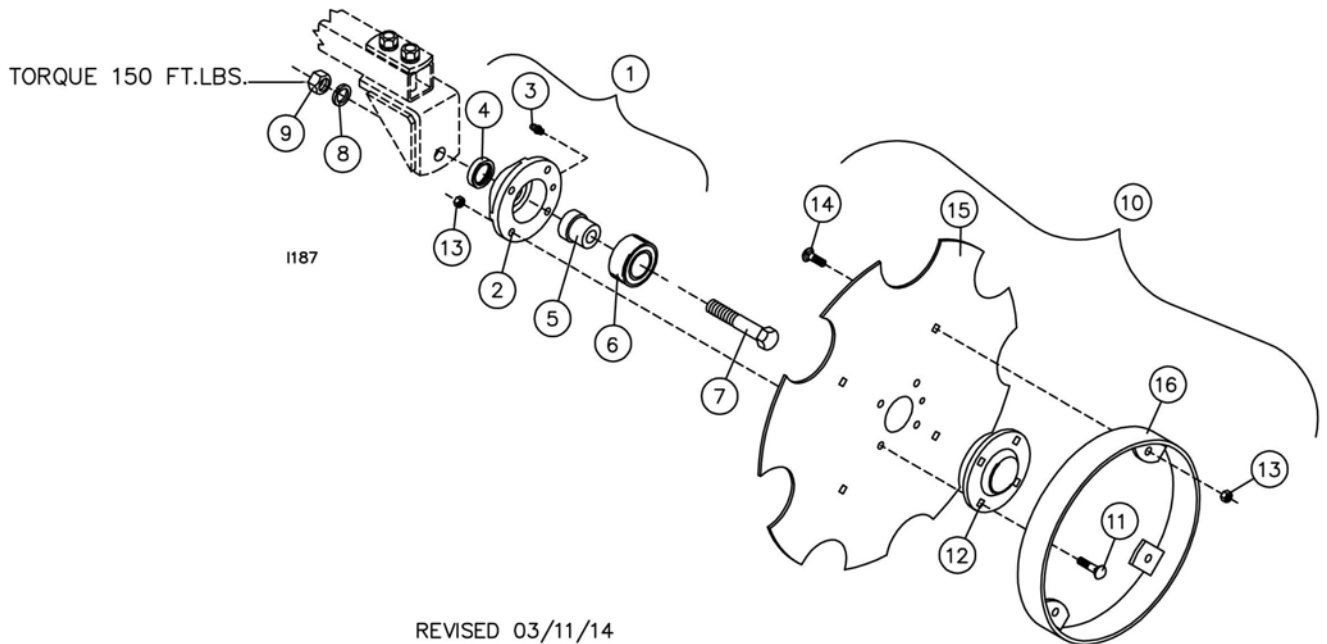
UPDATED 03/18/08



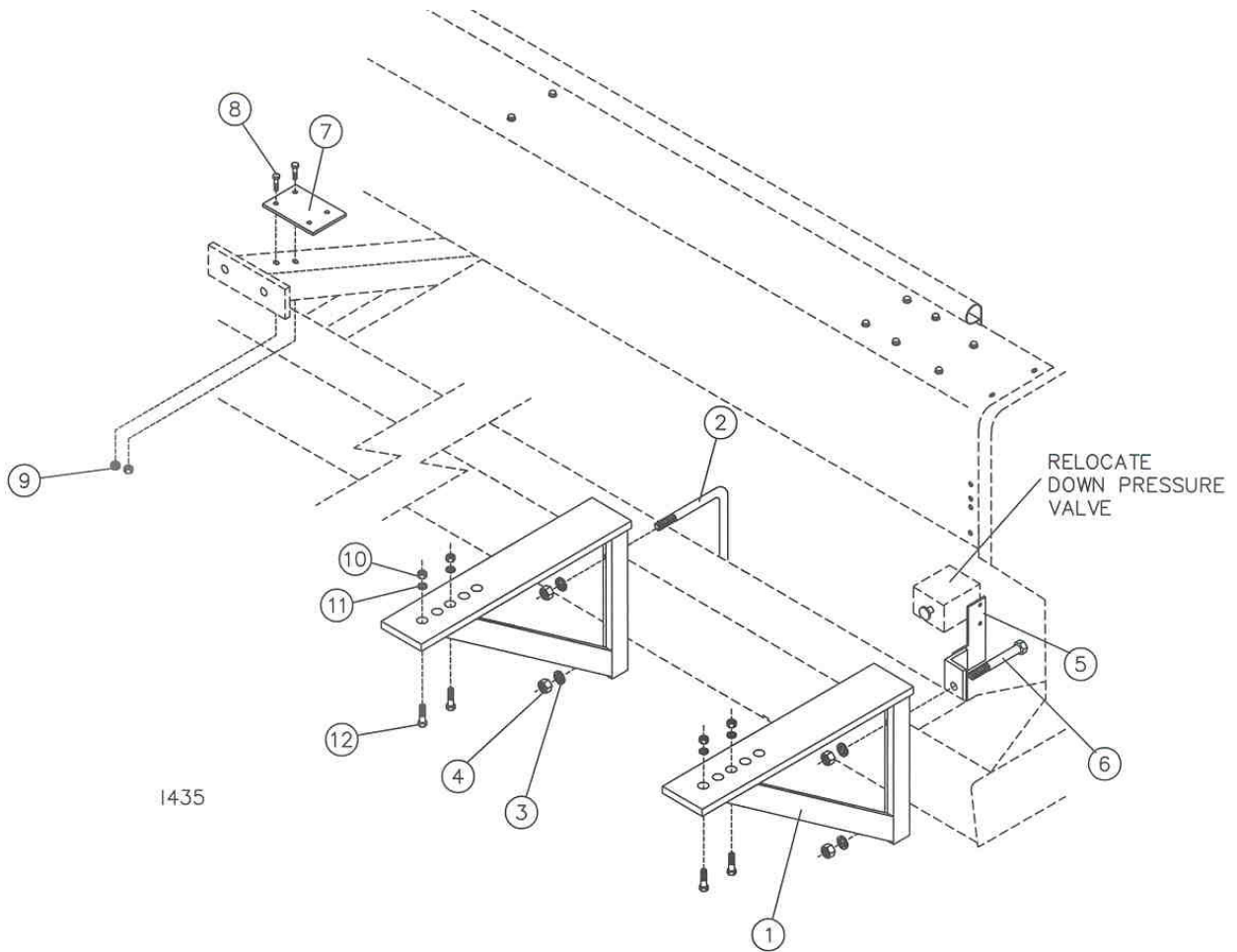
# PARTS IDENTIFICATION

## NOTCHED - MARKER DISC ASSEMBLY

| KEY | QTY. | PART NO. | DESCRIPTION   |
|-----|------|----------|---|
| 1   | 1    | 2965-128 | HUB AND BEARING ASSEMBLY, 4 BOLT<br>(INCLUDES # 2, 3, 4, 5 & 6) |
| 2   | 1    | 2965-351 | HUB CASTING, MACHINED, 4 BOLT<br>(INCLUDES # 3)                 |
| 3   | 1    | 2533-110 | 1/4-28 STRAIGHT SELF-TAP GREASE ZRK ZP.                         |
| 4   | 1    | 2550-069 | SEAL, TRIPLE LIP, NTI# 1812-5                                   |
| 5   | 1    | 2570-715 | BEARING INSERT, TRASHMASTER                                     |
| 6   | 1    | 2570-594 | BEARING, 2 ROW  |
| 7   | 1    | 2570-740 | D-BOLT, FLANGED, 5/8-11 X 2.812" GR. 8 ZYD                      |
| 8   | 1    | 2525-451 | 5/8 MED. LOCKWASHER ZP.   |
| 9   | 1    | 2520-452 | 5/8-11 HEX NUT ZP.  |
| 10  | 1    | 6001-610 | NOTCHED MARKER DISC ASSY.                                       |
| 11  | 4    | 2505-207 | 5/16-18 X 1 1/4" CAR. BLT. GR.5 ZP.                             |
| 12  | 1    | 2965-352 | HUB CAP CASTING, 4 BOLT, BLACK                                  |
| 13  | 8    | N10213   | 5/16-18 HEX FLANGE SERRATED NUT                                 |
| 14  | 4    | 2505-205 | 5/16-18 X 3/4" CAR. BLT. GR.5 ZP.                               |
| 15  | 1    | 6001-495 | MARKER DISC, NOTCH, PUNCH, 4 BOLT                               |
| 16  | 1    | 6001-217 | DEPTH CONTROL BAND W.A.   |



# PARTS IDENTIFICATION



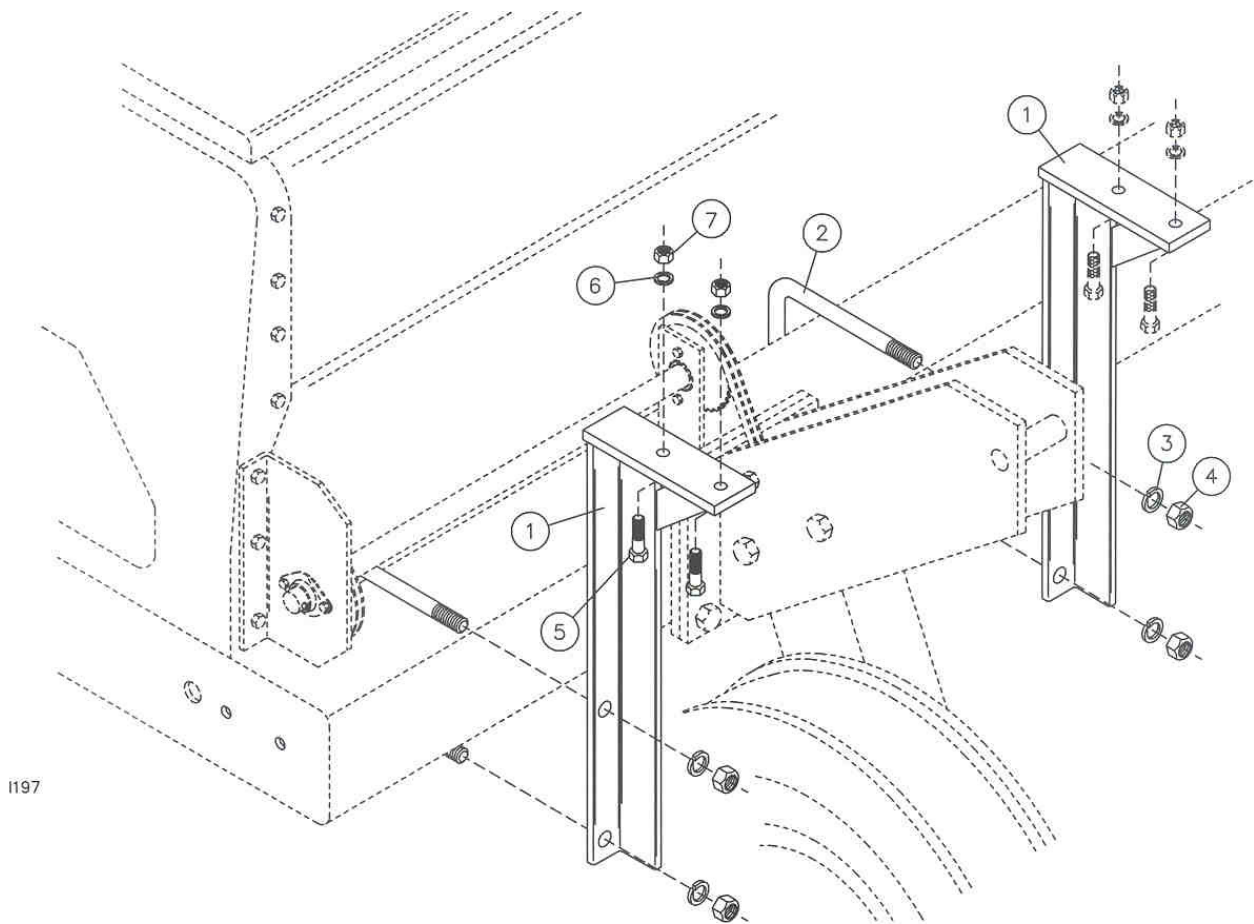
## 6001-016 – MARKER MOUNTING KIT, JOHN DEERE 1520

| KEY | QTY. | PART NO. | DESCRIPTION                         |
|-----|------|----------|-------------------------------------|
| 1   | 4    | 6001-279 | MARKER BRACKET W.A., JD 1520        |
| 2   | 3    | 2570-477 | 3/4 X 7 X 7 U-BOLT ZYD              |
| 3   | 8    | 2525-501 | 3/4 MED LOCK WASHER ZYD.            |
| 4   | 8    | 2520-504 | 3/4-10 HEX NUT ZYD.                 |
| 5   | 1    | 6001-282 | DOWN PRESSURE VALVE MTG. PLATE W.A. |
| 6   | 2    | 2502-509 | 3/4-10 X 7 HHCS GR 5 ZYD            |
| 7   | 1    | 6001-451 | SEQUENCE VALVE ADAPTER PLATE        |
| 8   | 2    | 2502-207 | 5/16-18 X 2 HHCS GR 5 ZYD           |
| 9   | 2    | 2520-205 | 5/16-18 LOCK HEX NUT ZYD            |
| 10  | 8    | 2520-352 | 1/2-13 HEX NUT ZYD                  |
| 11  | 8    | 2525-352 | 1/2 MED LOCK WASHER ZYD             |
| 12  | 8    | 2502-317 | 1/2-13 X 1 3/4 HHCS GR 5 ZYD        |

# PARTS IDENTIFICATION

## 6001-018 – MOUNTING KIT, JD 455 DRILLS

| KEY | QTY. | PART NO. | DESCRIPTION                  |
|-----|------|----------|------------------------------|
| 1   | 4    | 6001-274 | MOUNT ANGLE, JD 455, W.A.    |
| 2   | 4    | 2570-064 | 3/4 X 6 X 8 U-BOLT ZYD       |
| 3   | 8    | 2525-501 | 3/4 MED LOCK WASHER ZYD      |
| 4   | 8    | 2520-504 | 3/4-10 HEX NUT ZYD           |
| 5   | 8    | 2502-317 | 1/2-13 X 1 3/4 HHCS GR 5 ZYD |
| 6   | 8    | 2525-352 | 1/2 MED LOCK WASHER ZYD      |
| 7   | 8    | 2520-352 | 1/2-13 HEX NUT ZYD           |

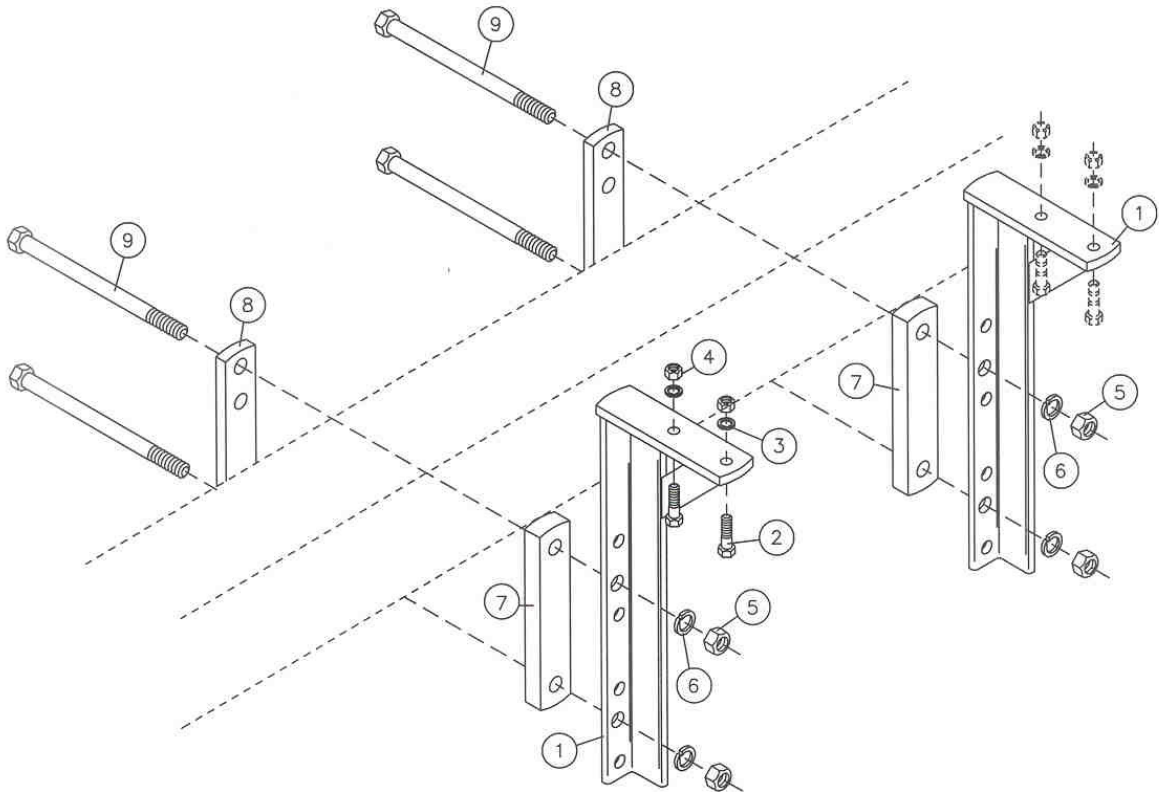


1197

# PARTS IDENTIFICATION

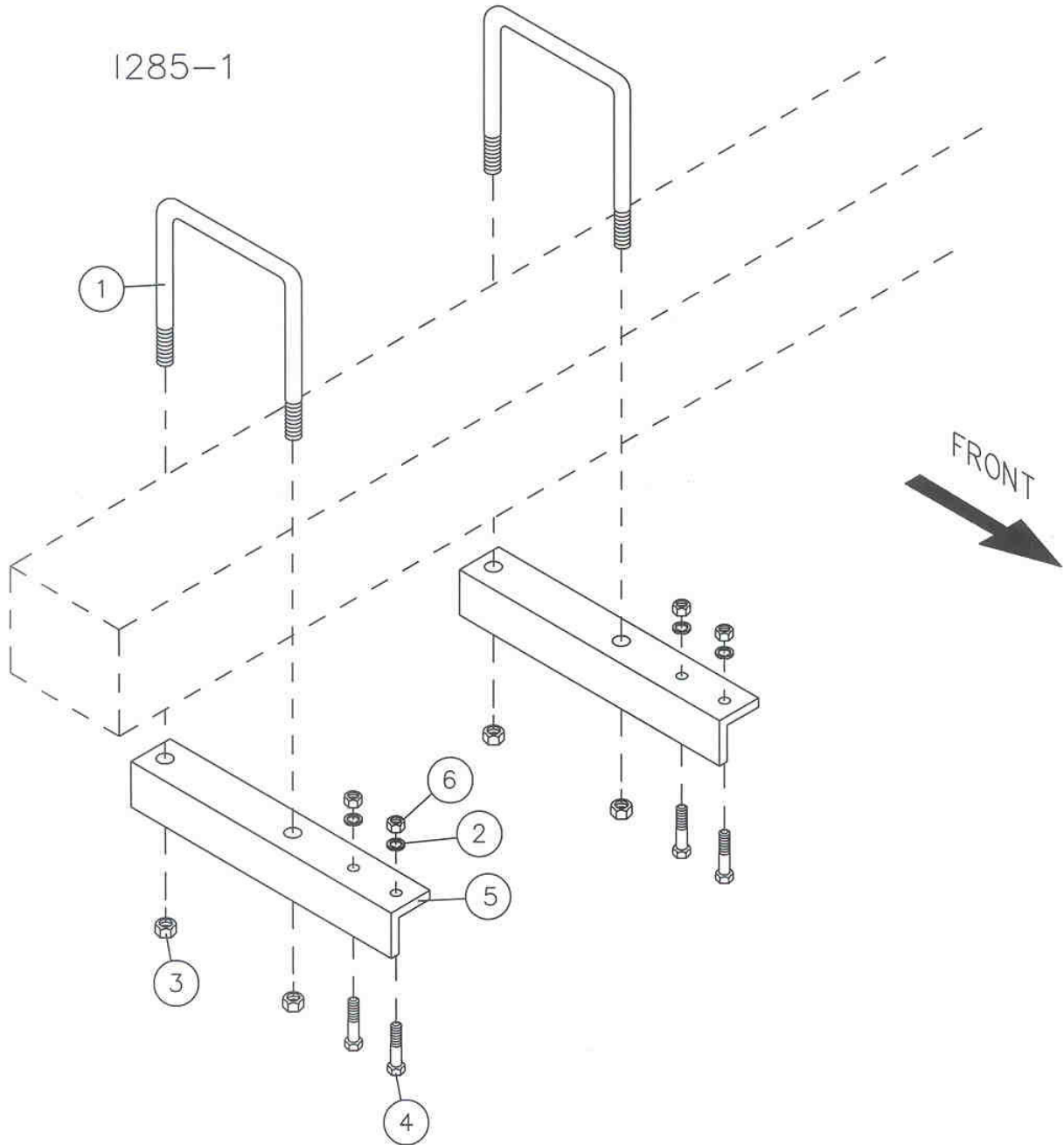
## 6001-022 – MOUNTING KIT, 15' & 20' TYE SERIES 5 30' JOHN DEERE PLANTER 12 ROW 30"

| KEY | QTY. | PART NO. | DESCRIPTION                  |
|-----|------|----------|------------------------------|
| 1   | 4    | 6001-259 | 21" MOUNT ANGLE W.A.         |
| 2   | 8    | 2502-317 | 1/2-13 X 1 3/4 HHCS GR 5 ZYD |
| 3   | 8    | 2525-352 | 1/2 MED LOCK WASHER ZYD      |
| 4   | 8    | 2520-352 | 1/2-13 HEX NUT ZYD           |
| 5   | 8    | 2520-504 | 3/4-10 HEX NUT ZYD           |
| 6   | 8    | 2525-501 | 3/4 MED LOCK WASHER ZYD      |
| 7   | 4    | 6001-477 | 1" SPACER, 7" BAR            |
| 8   | 4    | 2970-324 | MOUNT STRAP                  |
| 9   | 8    | 2502-520 | 3/4-10 X 11" HHCS GR 5 ZYD   |



198

# PARTS IDENTIFICATION

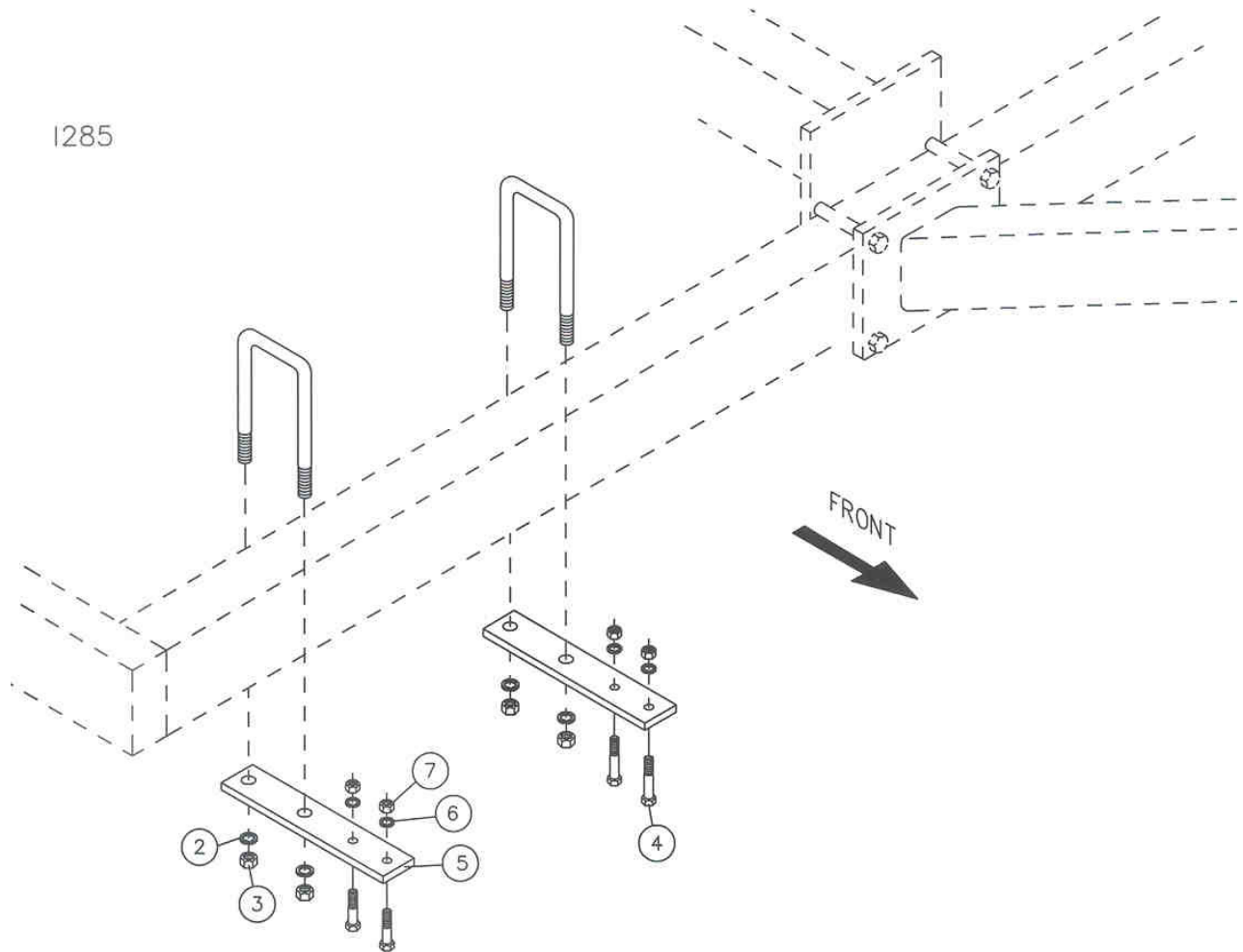


## 6001-026 – MARKER MOUNTING KIT, 7 X 7 CULTIVATOR

| KEY | QTY. | PART NO. | DESCRIPTION                  |
|-----|------|----------|------------------------------|
| 1   | 4    | 2570-626 | 5/8 X 7 X 9 U-BOLT ZYD       |
| 2   | 8    | 2525-352 | 1/2 MED LOCKWASHER ZYD       |
| 3   | 8    | 2520-459 | 5/8-11 HEX LOCK NUT ZYD      |
| 4   | 8    | 2502-294 | 1/2-13 X 1-1/2 HHCS GR 5 ZYD |
| 5   | 4    | 6001-353 | MOUNT ANGLE, 7X7 CULTIVATOR  |
| 6   | 8    | 2520-352 | 1/2-13 HEX NUT ZYD           |



# PARTS IDENTIFICATION

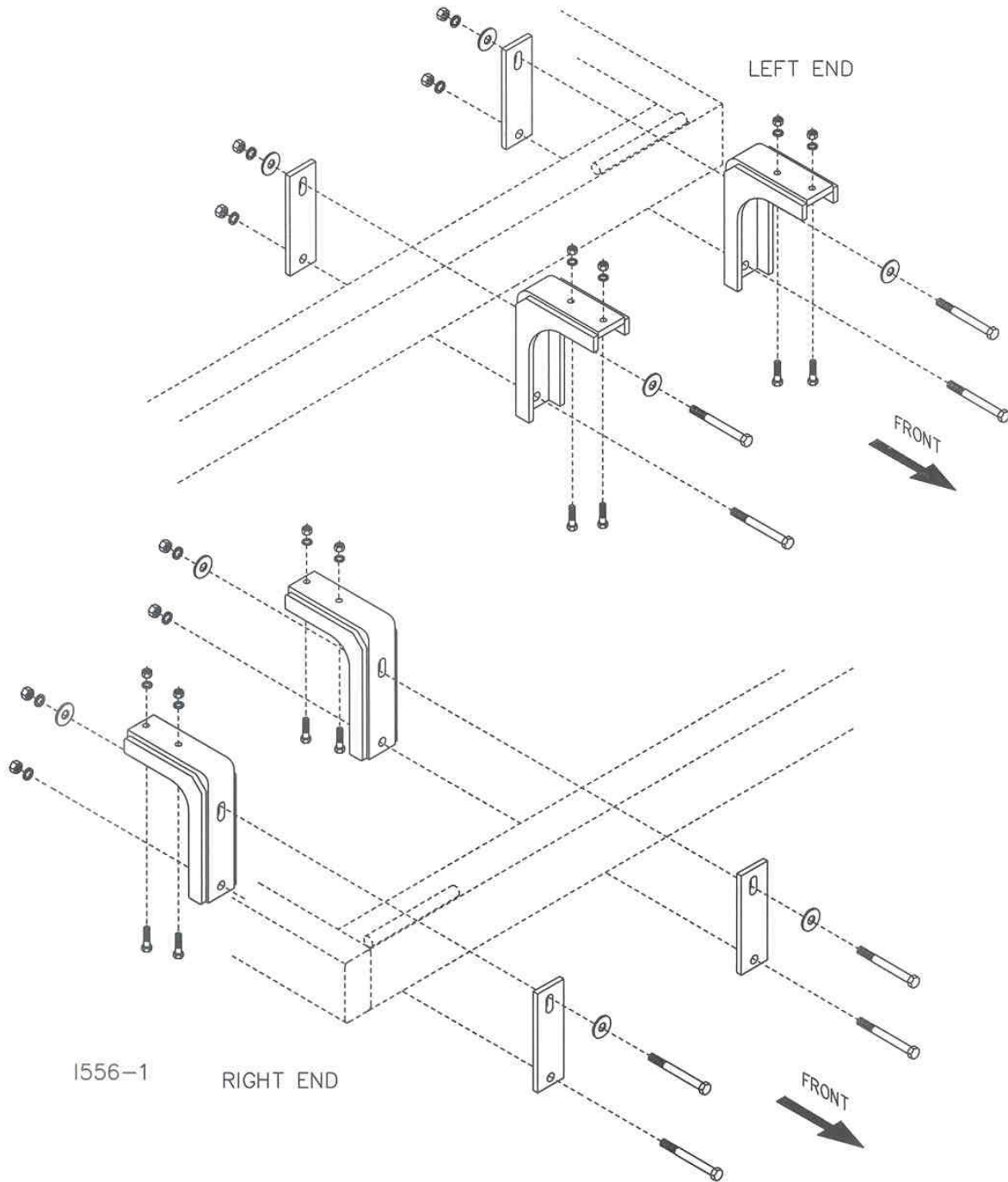


## 6001-028 – MARKER MOUNTING KIT JOHN DEERE 750, 1560, 1590 15FT & 20FT

| KEY | QTY. | PART NO. | DESCRIPTION              |
|-----|------|----------|--------------------------|
| 1   | 4    | 2570-733 | 3/4 X 4 X 8 U-BOLT ZYD   |
| 2   | 8    | 2525-501 | 3/4 MED LOCK WASHER ZYD. |
| 3   | 8    | 2520-504 | 3/4-10 HEX NUT ZYD       |
| 4   | 8    | 2502-351 | 1/2-13 X 2 HHCS GR 5 ZYD |
| 5   | 4    | 6001-416 | MOUNTING PLATE, JD 750   |
| 6   | 8    | 2525-352 | 1/2 MED LOCK WASHER ZYD  |
| 7   | 8    | 2520-352 | 1/2-13 HEX NUT ZYD       |

# PARTS IDENTIFICATION

6001-031 MARKER MOUNTING KIT, JD 1850/1860/1890 W/O CCS TANK

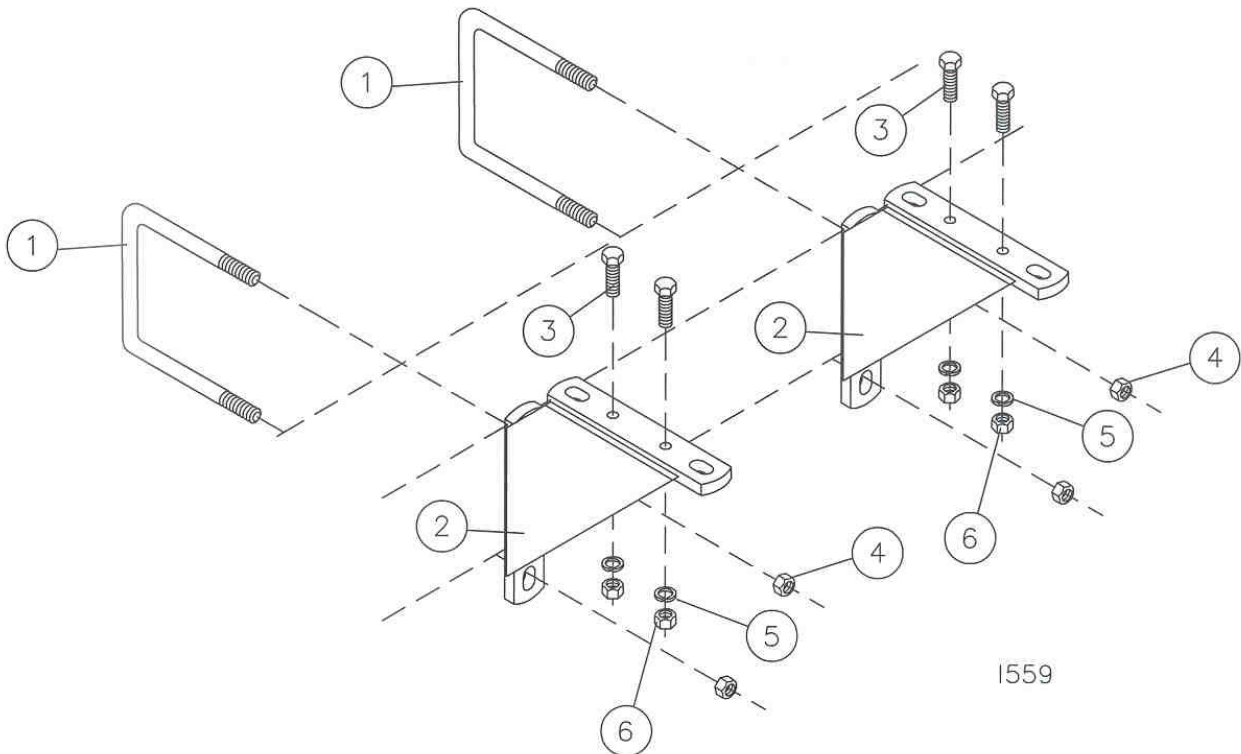


| KEY | QTY | PART NO. | DESCRIPTION               |
|-----|-----|----------|---------------------------|
| 1   | 8   | 2502-509 | 3/4-10 X 7" HHCS GR.5 ZP  |
| 2   | 4   | 6001-284 | MARKER MOUNT W.A.-JD 1850 |
| 3   | 8   | 2526-501 | 3/4 STD. FLATWASHER ZP    |
| 4   | 8   | 2525-501 | 3/4 MED. LOCKWASHER ZP    |
| 5   | 8   | 2520-504 | 3/4-10 HEX NUT ZP         |
| 6   | 8   | 2502-351 | 1/2-13 X 2" HHCS GR. 5 ZP |
| 7   | 8   | 2525-352 | 1/2 MED. LOCKWASHER ZP    |
| 8   | 8   | 2520-352 | 1/2-13 HEX NUT ZP         |
| 9   | 4   | 6001-493 | MARKER MOUNT CLAMP PLATE  |

# PARTS IDENTIFICATION

## 6001-033 - MARKER MOUNT KIT 7 X 7 OR 8 X 8 BAR

| Key | Qty. | Part No. | Description                  |
|-----|------|----------|------------------------------|
| 1   | 4    | 2570-478 | 3/4 X 7" X 9" U-BOLT ZYD     |
|     | 4    | 2570-755 | 3/4 X 8" X 10" U-BOLT ZYD    |
| 2   | 4    | 6001-289 | MARKER MOUNT W.A.            |
| 3   | 8    | 2502-317 | 1/2-13 X 1 3/4" HHCS GR.5 ZP |
| 4   | 8    | 2520-515 | 3/4-16 LOCK HEX NUT ZP       |
| 5   | 8    | 2525-352 | 1/2 MED. LOCKWASHER          |
| 6   | 8    | 2520-352 | 1/2-13 HEX NUT ZP            |

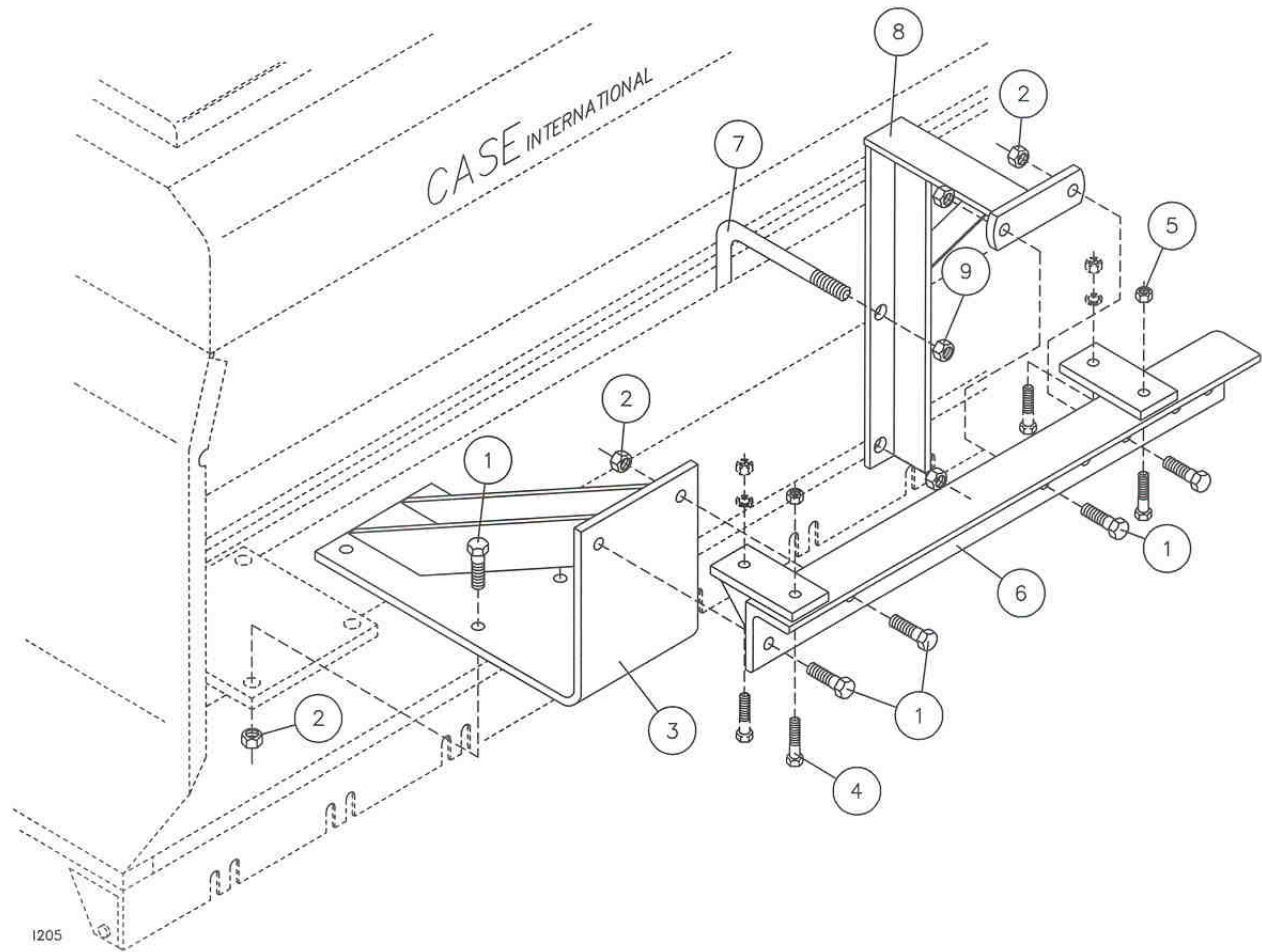


1559

# PARTS IDENTIFICATION

## 6001-042 – MOUNTING KIT, CASE IH 5500 DRILL

| KEY | QTY. | PART NO. | DESCRIPTION                    |
|-----|------|----------|--------------------------------|
| 1   | 16   | 2502-331 | 5/8-11 X 1 3/4 HHCS GR 5 ZYD   |
| 2   | 16   | 2520-459 | 5/8-11 LOCK HEX NUT ZYD        |
| 3   | 2    | 6001-275 | MOUNTING BRACKET W.A., IH 5500 |
| 4   | 8    | 2502-351 | 1/2-13 X 2 HHCS GR 5 ZYD       |
| 5   | 8    | 2520-357 | 1/2-13 LOCK HEX NUT ZYD        |
| 6   | 2    | 6001-276 | MOUNT ANGLE W.A., CASE IH 5500 |
| 7   | 2    | 2570-478 | 3/4 X 7 X 9 U-BOLT ZYD         |
| 8   | 2    | 6001-277 | MOUNTING BRACE W.A., IH 5500   |
| 9   | 4    | 2520-515 | 3/4-10 LOCK HEX NUT ZYD        |



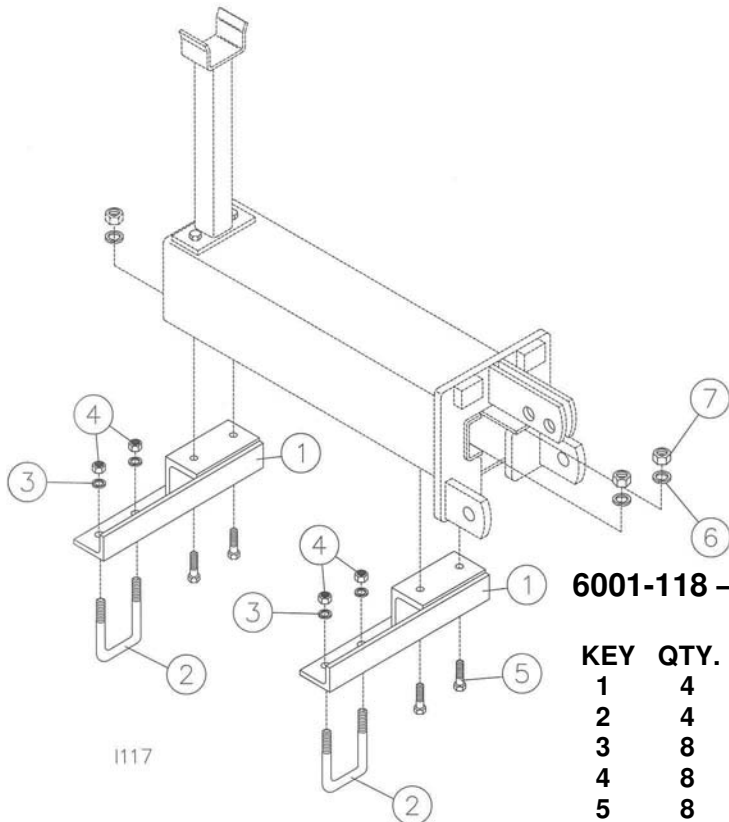
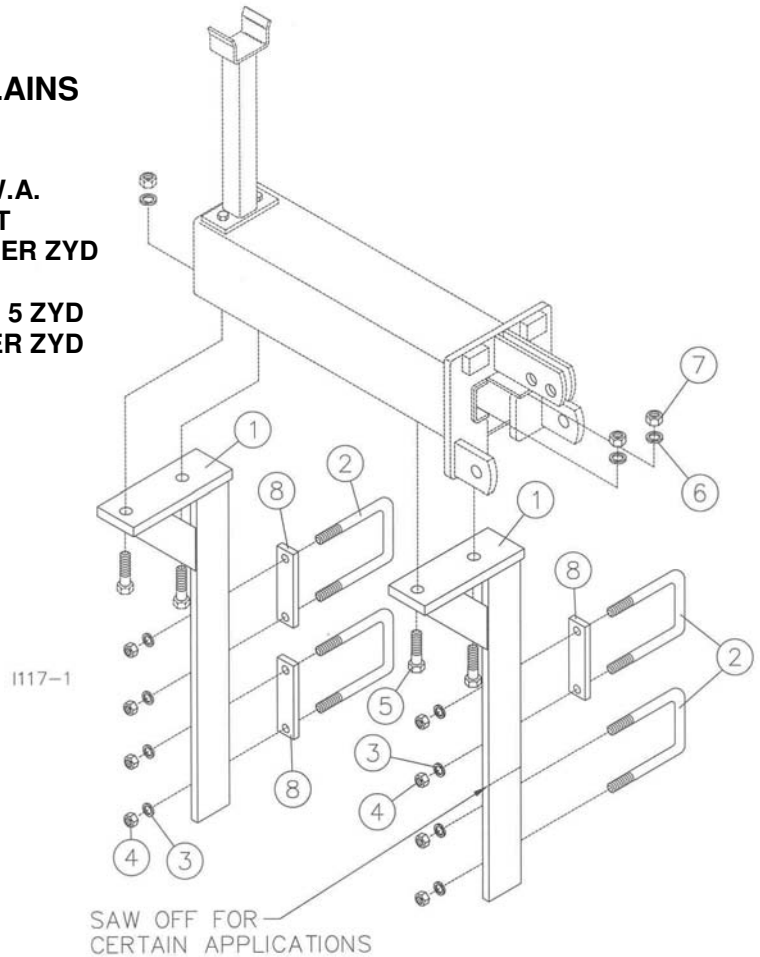
**NOTE: SHOWN ON RIGHT HAND END OF DRILL.**

# PARTS IDENTIFICATION

## 6001-120 – MOUNTING KIT, GREAT PLAINS

| KEY | QTY. | PART NO. | DESCRIPTION                  |
|-----|------|----------|------------------------------|
| 1   | 4    | 6001-259 | 21" MOUNT ANGLE W.A.         |
| 2   | 8    | 2570-564 | 5/8 X 3-1/2 X 5 U-BOLT       |
| 3   | 16   | 2525-451 | 5/8 MED LOCK WASHER ZYD      |
| 4   | 16   | 2520-452 | 5/8-11 HEX NUT ZYD           |
| 5   | 8    | 2502-317 | 1/2-13 X 1 3/4 HHCS GR 5 ZYD |
| 6   | 8    | 2525-352 | 1/2 MED LOCK WASHER ZYD      |
| 7   | 8    | 2520-352 | 1/2-13 HEX NUT ZYD           |
| 8   | 8    | 6001-445 | MOUNTING SPACER              |

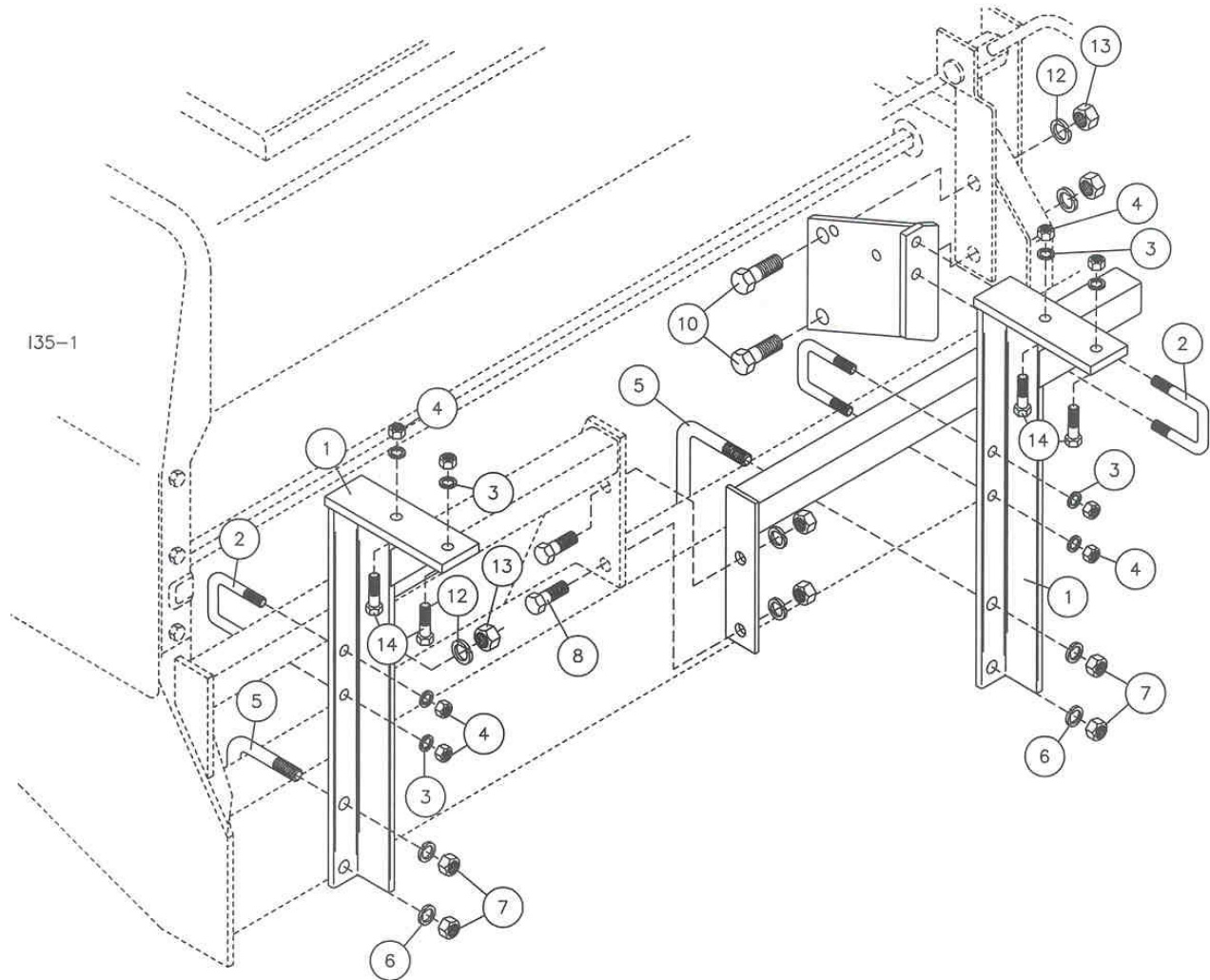
**NOTE:** Part No. 6001-445, Mounting Spacer  
Only used on drills with 7" or 10" spacing.  
Also need to saw off bottom end of 6001-259  
to obtain full range of seeding rates.



## 6001-118 – MOUNTING KIT, (M&W, MARLISS &TYE)

| KEY | QTY. | PART NO. | DESCRIPTION                  |
|-----|------|----------|------------------------------|
| 1   | 4    | 6001-232 | MOUNTING BRACKET W.A.        |
| 2   | 4    | 2570-564 | 5/8 X 3 1/2 X 5 U-BOLT ZYD   |
| 3   | 8    | 2525-451 | 5/8 MED LOCK WASHER ZYD      |
| 4   | 8    | 2520-452 | 5/8-11 HEX NUT ZYD           |
| 5   | 8    | 2502-317 | 1/2-13 X 1 3/4 HHCS GR 5 ZYD |
| 6   | 8    | 2525-352 | 1/2 MED LOCK WASHER ZYD      |
| 7   | 8    | 2520-352 | 1/2-13 HEX NUT ZYD           |

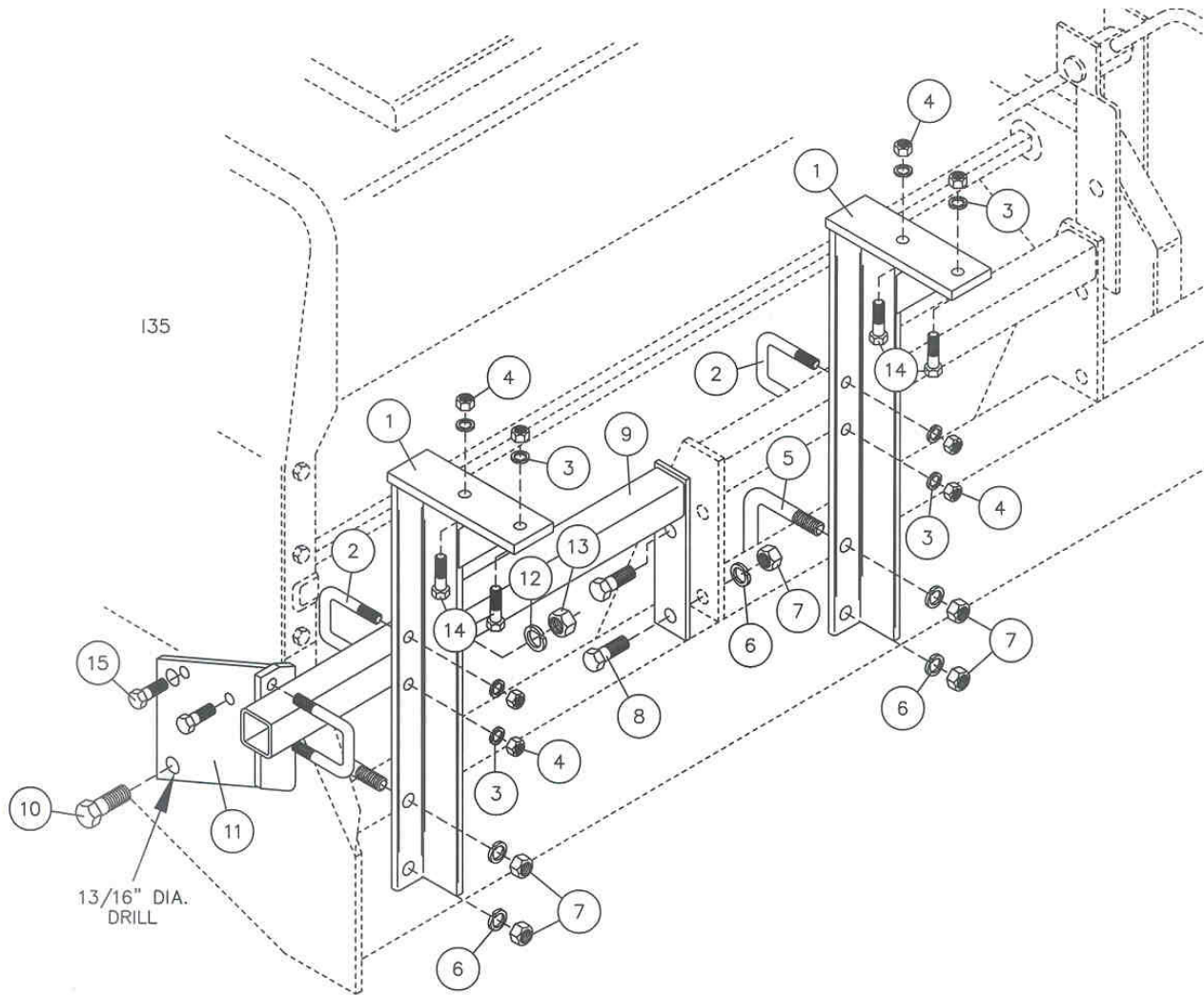
# PARTS IDENTIFICATION



## 6001-191 – MARKER MOUNTING KIT, JD 515/520 (MOUNTED ON JD 515)

| KEY | QTY. | PART NO. | DESCRIPTION                           |
|-----|------|----------|---------------------------------------|
| 1   | 4    | 6001-261 | MOUNT ANGLE W.A., JD 515 & 520        |
| 2   | 6    | 2570-565 | 1/2 X 2 X 3 U-BOLT ZYD                |
| 3   | 20   | 2525-352 | 1/2 MED LOCK WASHER ZYD               |
| 4   | 20   | 2520-352 | 1/2-13 HEX NUT ZYD                    |
| 5   | 4    | 2570-602 | 5/8-11 X 3 X 4 1/2 U-BOLT ZYD         |
| 6   | 12   | 2525-451 | 5/8 MED LOCK WASHER ZYD               |
| 7   | 12   | 2520-452 | 5/8-11 HEX NUT ZYD                    |
| 8   | 4    | 2502-318 | 5/8-11 X 1 1/2 HHCS GR 5 ZYD          |
| 9   | 2    | 6001-262 | 2 X 2 BAR W.A., JD 515 & 520          |
| 10  | 4    | 2502-503 | 3/4-10 X 2 HHCS GR 5 ZYD              |
| 11  | 1    | 6001-455 | 2 X 2 BAR BRACE, JD 515 & 520 (SHOWN) |
|     | 1    | 6001-460 | L.H. 2 X 2 BRACE, JD 515 & 520        |
| 12  | 4    | 2525-501 | 3/4 MED LOCK WASHER ZYD               |
| 13  | 4    | 2520-504 | 3/4-10 HEX NUT ZYD                    |
| 14  | 8    | 2502-317 | 1/2-13 X 1 3/4 HHCS GR 5 ZYD          |

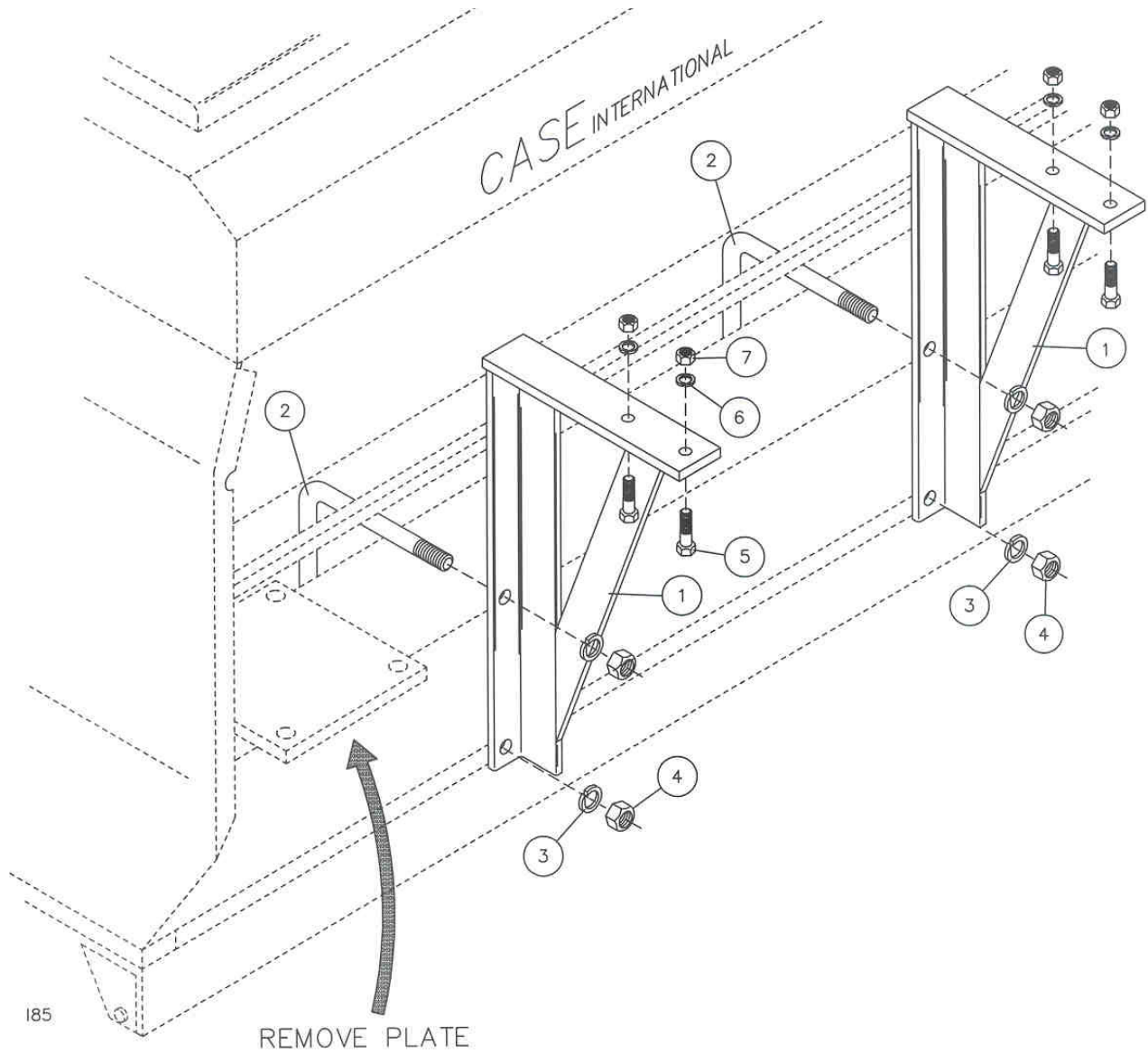
# PARTS IDENTIFICATION



## 6001-191 – MARKER MOUNTING KIT, JD 515/520 (MOUNTED ON JD 520)

| KEY | QTY. | PART NO. | DESCRIPTION                           |
|-----|------|----------|---------------------------------------|
| 1   | 4    | 6001-261 | MOUNT ANGLE W.A., JD 515 & 520        |
| 2   | 6    | 2570-565 | 1/2 X 2 X 3 U-BOLT ZYD                |
| 3   | 20   | 2525-352 | 1/2 MED LOCK WASHER ZYD               |
| 4   | 20   | 2520-352 | 1/2-13 HEX NUT ZYD                    |
| 5   | 4    | 2570-602 | 5/8-11 X 3 X 4 1/2 U-BOLT ZYD         |
| 6   | 12   | 2525-451 | 5/8 MED LOCK WASHER ZYD               |
| 7   | 12   | 2520-452 | 5/8-11 HEX NUT ZYD                    |
| 8   | 4    | 2502-318 | 5/8-11 X 1 1/2 HHCS GR 5 ZYD          |
| 9   | 2    | 6001-262 | 2 X 2 BAR W.A., JD 515 & 520          |
| 10  | 4    | 2502-503 | 3/4-10 X 2 HHCS GR 5 ZYD              |
| 11  | 1    | 6001-455 | 2 X 2 BAR BRACE, JD 515 & 520 (SHOWN) |
|     | 1    | 6001-460 | L.H. 2 X 2 BRACE, JD 515 & 520        |
| 12  | 4    | 2525-501 | 3/4 MED LOCK WASHER ZYD               |
| 13  | 4    | 2520-504 | 3/4-10 HEX NUT ZYD                    |
| 14  | 8    | 2502-317 | 1/2-13 X 1 3/4 HHCS GR 5 ZYD          |

# PARTS IDENTIFICATION

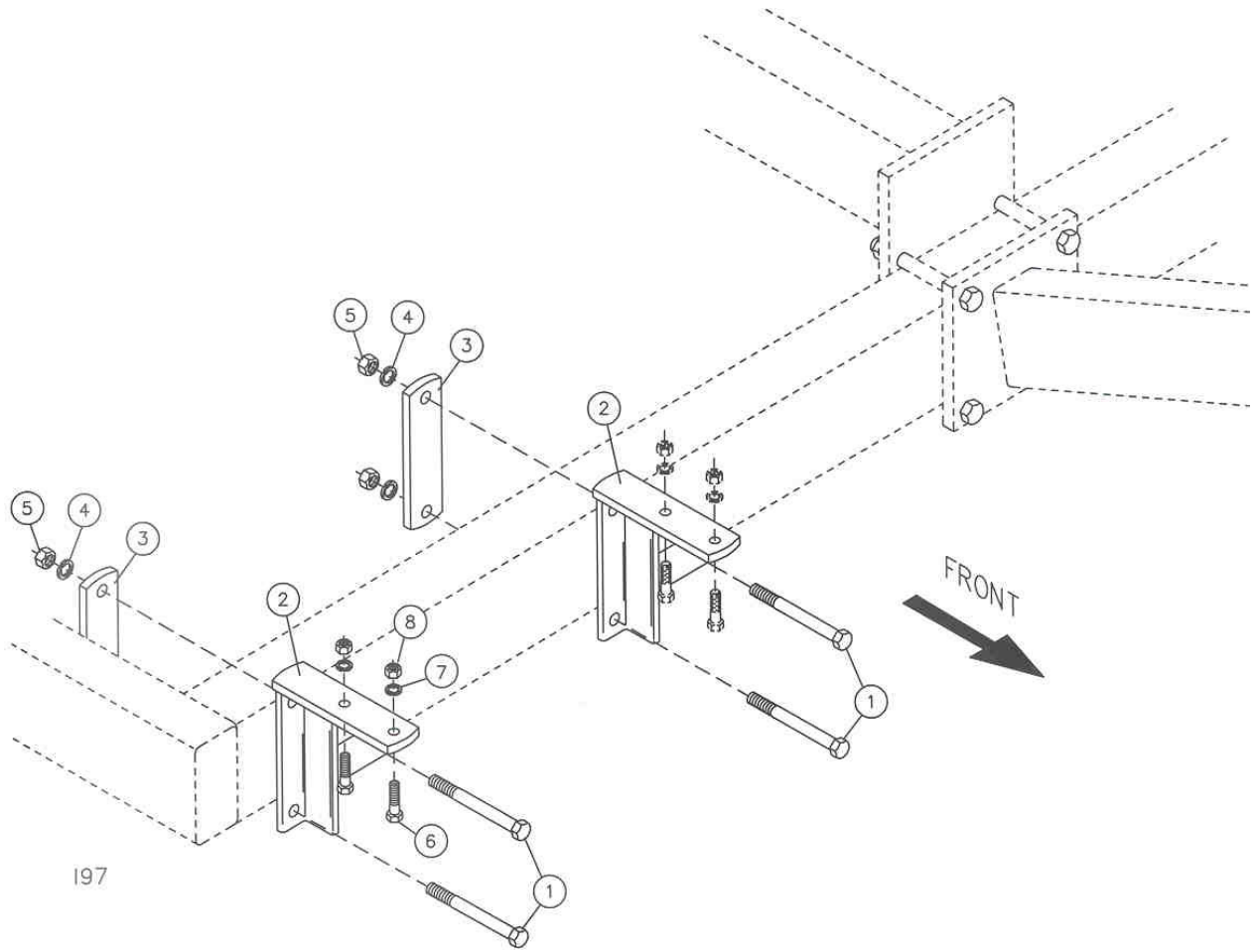


## 6001-195 – MARKER MOUNTING KIT, CASE IH 5200/5400

| KEY | QTY. | PART NO. | DESCRIPTION                             |
|-----|------|----------|---|
| 1   | 2    | 6001-266 | R.H. MARKER MOUNT W.A., IH 5200 (SHOWN) |
|     | 2    | 6001-267 | L.H. MARKER MOUNT W.A., IH 5200         |
| 2   | 4    | 2570-478 | 3/4 X 7 X 9 U-BOLT ZYD                  |
| 3   | 8    | 2525-501 | 3/4 MED LOCK WASHER ZYD                 |
| 4   | 8    | 2520-504 | 3/4-10 HEX NUT ZYD                      |
| 5   | 8    | 2502-317 | 1/2-13 X 1 3/4 HHCS GR 5 ZYD            |
| 6   | 8    | 2525-352 | 1/2 MED LOCK WASHER ZYD                 |
| 7   | 8    | 2520-352 | 1/2-13 HEX NUT ZYD                      |



# PARTS IDENTIFICATION



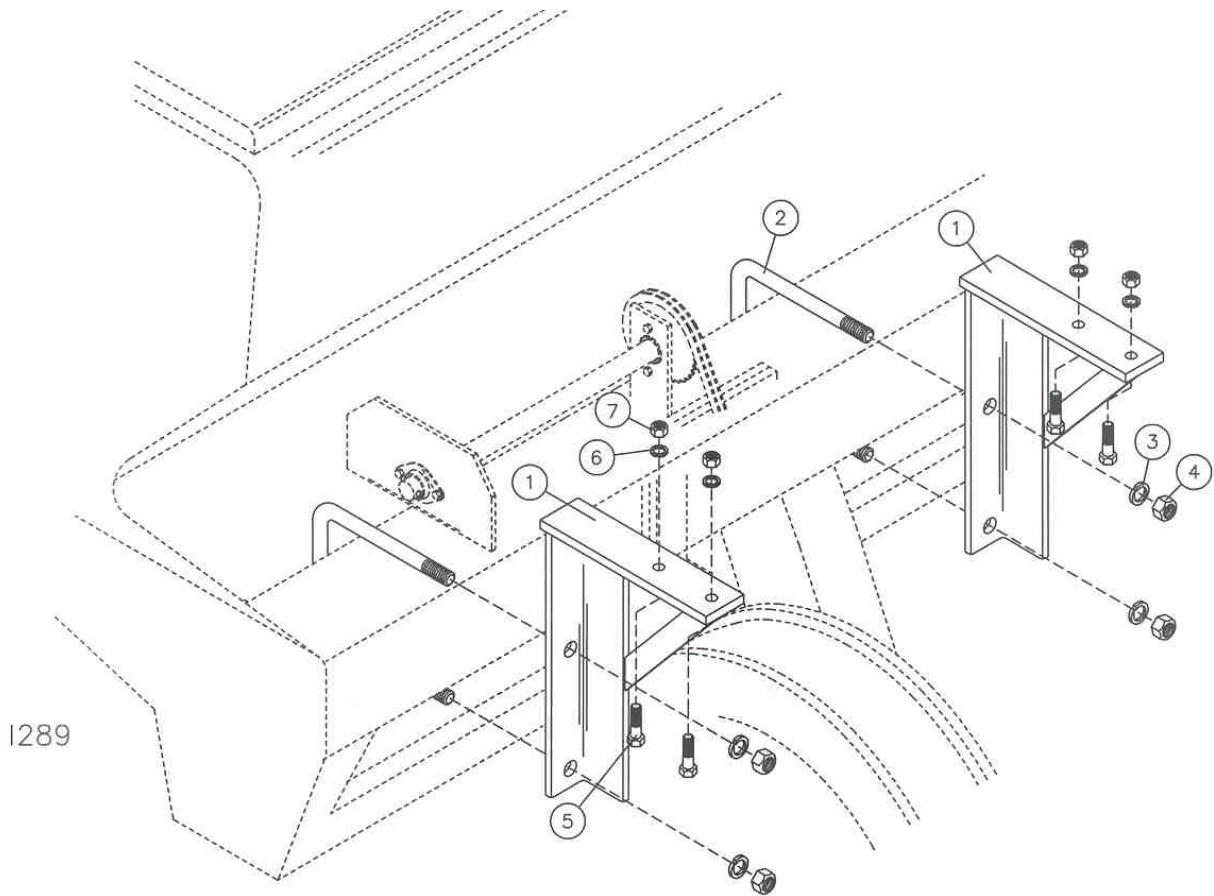
197

**NOTE:** May also be used  
on 4 x 4 toolbar.

## 6001-198 – MARKER MOUNTING KIT, JD 750, 1560, 1590 - 30 FT. MARKERS

| KEY | QTY. | PART NO. | DESCRIPTION                  |
|-----|------|----------|------------------------------|
| 1   | 8    | 2502-335 | 5/8-11 X 6 HHCS GR 5 ZYD     |
| 2   | 4    | 6001-268 | MOUNTING ANGLE W.A., JD 750  |
| 3   | 4    | 6001-470 | CLAMP PLATE, JD 750          |
| 4   | 8    | 2525-451 | 5/8 MED LOCK WASHER ZYD      |
| 5   | 8    | 2520-452 | 5/8-11 HEX NUT ZYD           |
| 6   | 8    | 2502-317 | 1/2-13 X 1 3/4 HHCS GR 5 ZYD |
| 7   | 8    | 2525-352 | 1/2 MED LOCK WASHER ZYD      |
| 8   | 8    | 2520-352 | 1/2-13 HEX NUT ZYD           |

## PARTS IDENTIFICATION

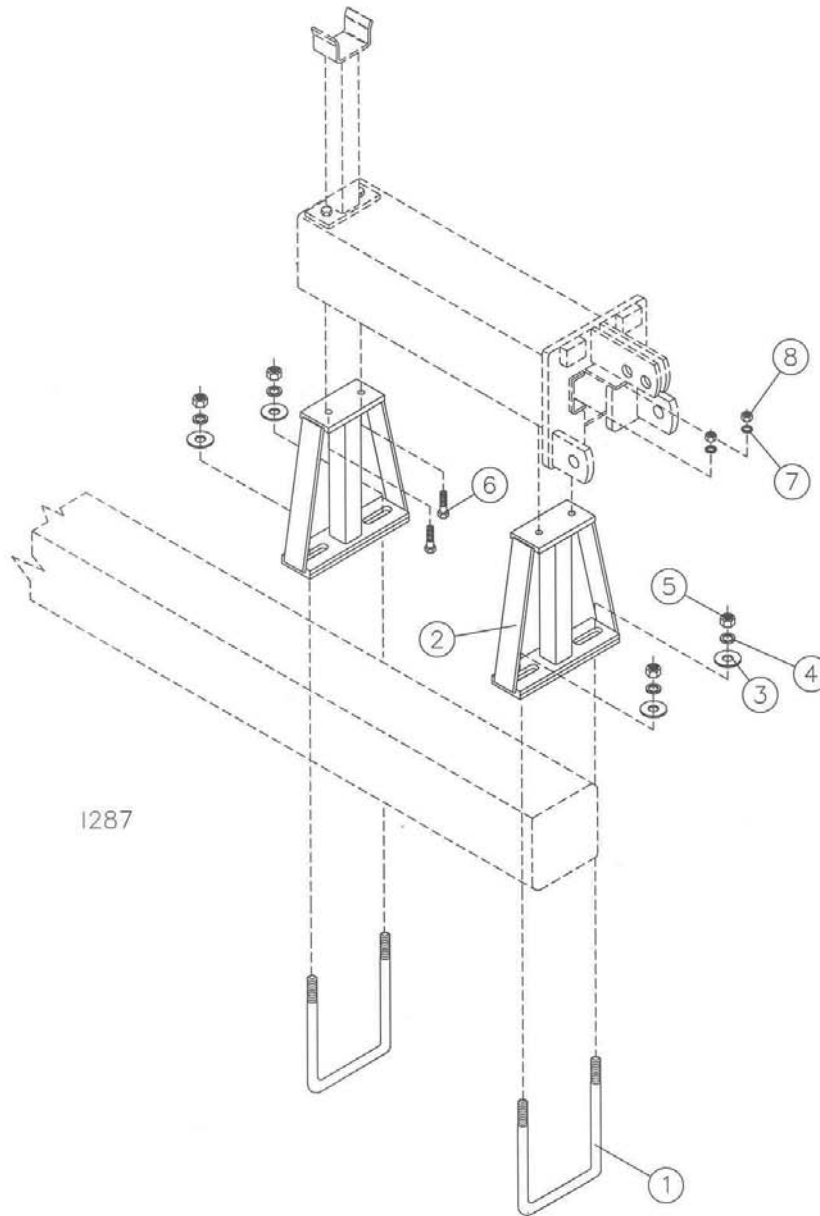


### 6100-108 MOUNTING KIT, G.P. 2000 SERIES

| KEY | QTY. | PART NO. | DESCRIPTION                    |
|-----|------|----------|--------------------------------|
| 1   | 4    | 6100-217 | MOUNT ANGLE, (G.P. 2000) W.A.  |
| 2   | 4    | 2570-064 | 3/4 X 6 X 8 U-BOLT, ZP.        |
| 3   | 8    | 2525-501 | 3/4 MED. LOCKWASHER, ZP.       |
| 4   | 8    | 2520-504 | 3/4-10 HEX NUT, ZP.            |
| 5   | 8    | 2502-317 | 1/2-13 X 1 3/4" HHCS GR.5, ZP. |
| 6   | 8    | 2525-352 | 1/2 MED. LOCKWASHER, ZP.       |
| 7   | 8    | 2520-352 | 1/2-13 HEX NUT, ZP.            |

# PARTS IDENTIFICATION

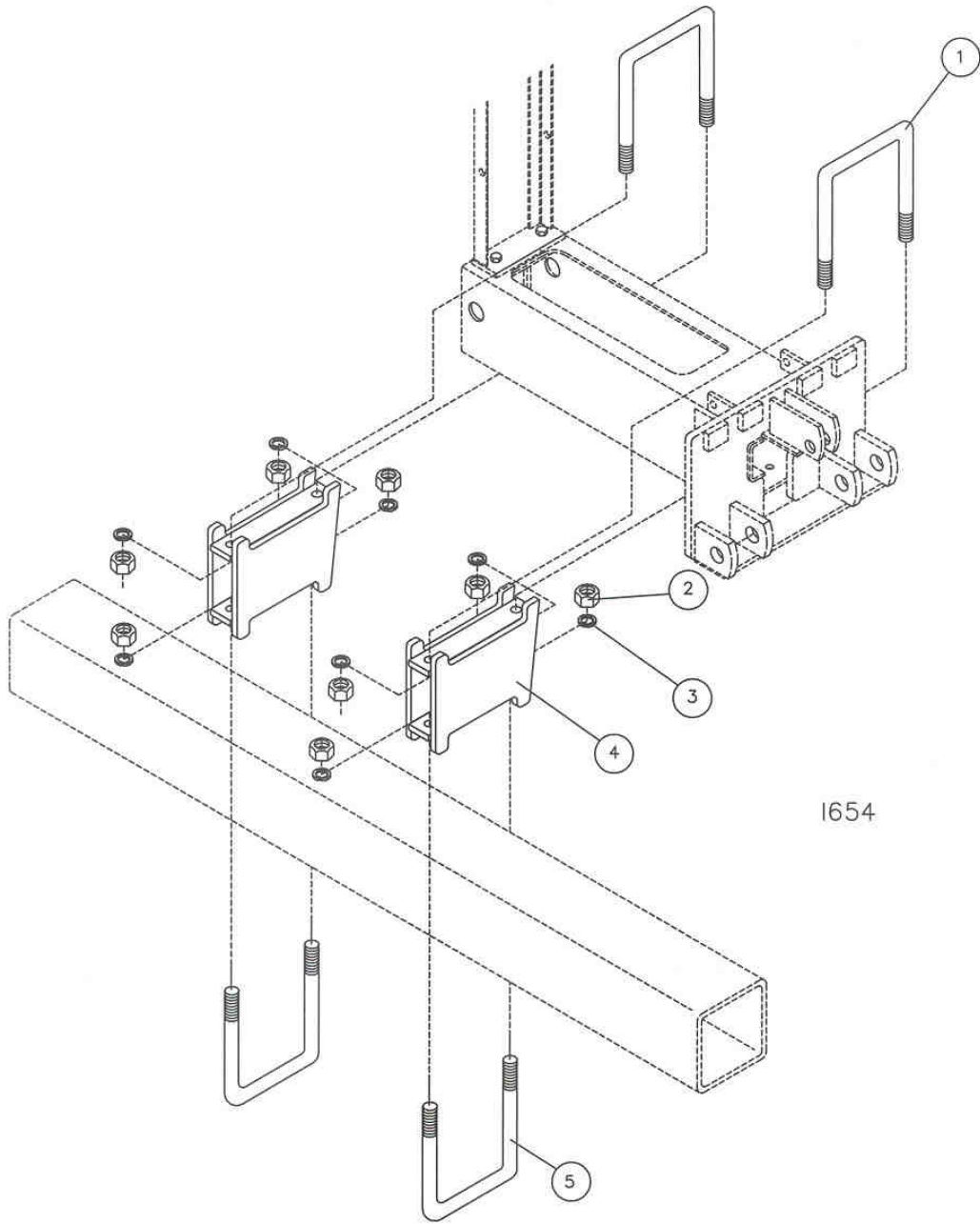
**NOTE:** ON PLANTERS, 6001-022 MOUNTING KIT  
MAY BE USED WHEN TRYING TO CLEAR FERTILIZER TANKS.



## 6100-110 – PLANTER MARKER KIT 5 X 7, 7 X 7 TOOLBAR

| KEY | QTY. | PART NO. | DESCRIPTION                   |
|-----|------|----------|-------------------------------|
| 1   | 4    | 2570-478 | 3/4 X 7 X 9 U-BOLT ZYD        |
| 2   | 4    | 6100-213 | MOUNTING BRACKET W.A. PLANTER |
| 3   | 8    | 2526-501 | 3/4 STANDARD FLAT WASHER ZYD  |
| 4   | 8    | 2525-501 | 3/4 MED LOCK WASHER ZYD       |
| 5   | 8    | 2520-504 | 3/4-10 HEX NUT ZYD            |
| 6   | 8    | 2502-317 | 1/2-13 X 1 3/4 HHCS GR 5 ZYD  |
| 7   | 8    | 2525-352 | 1/2 MED LOCK WASHER ZYD       |
| 8   | 8    | 2520-352 | 1/2-13 HEX NUT ZYD            |

# PARTS IDENTIFICATION



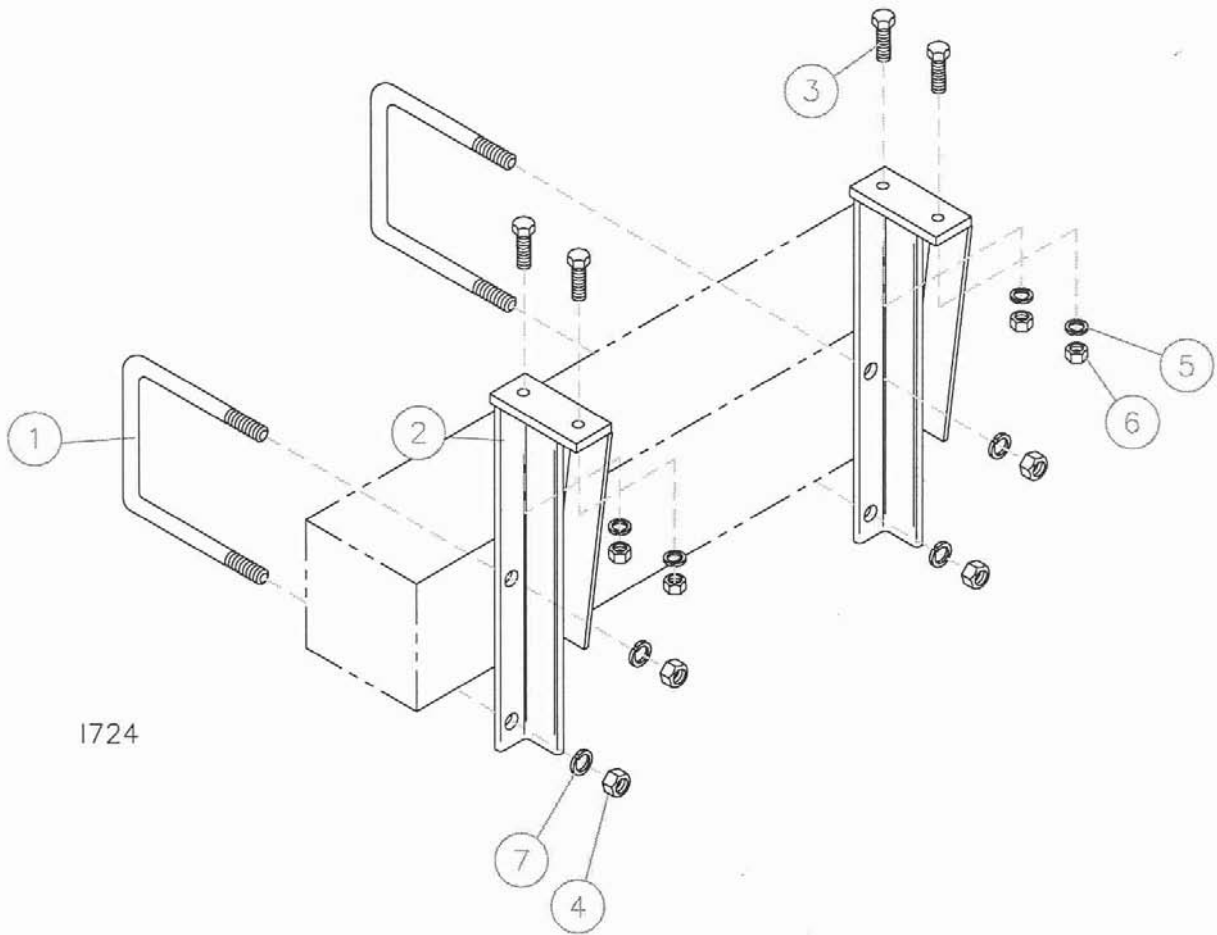
## 6150-090 – MARKER MOUNT KIT

| KEY | QTY | PART NO. | DESCRIPTION             |
|-----|-----|----------|-------------------------|
| 1   | 4   | 2570-771 | 5/8 X 8 X 10 U-BOLT ZYD |
| 2   | 16  | 2520-452 | 5/8 - 11 HEX NUT ZP     |
| 3   | 16  | 2525-451 | 5/8 MED LOCKWASHER      |
| 4   | 4   | 6150-285 | MARKER TUBE MOUNT W.A.  |
| 5   | 4   | 2570-626 | 5/8 X 7 X 9 U-BOLT, ZYD |

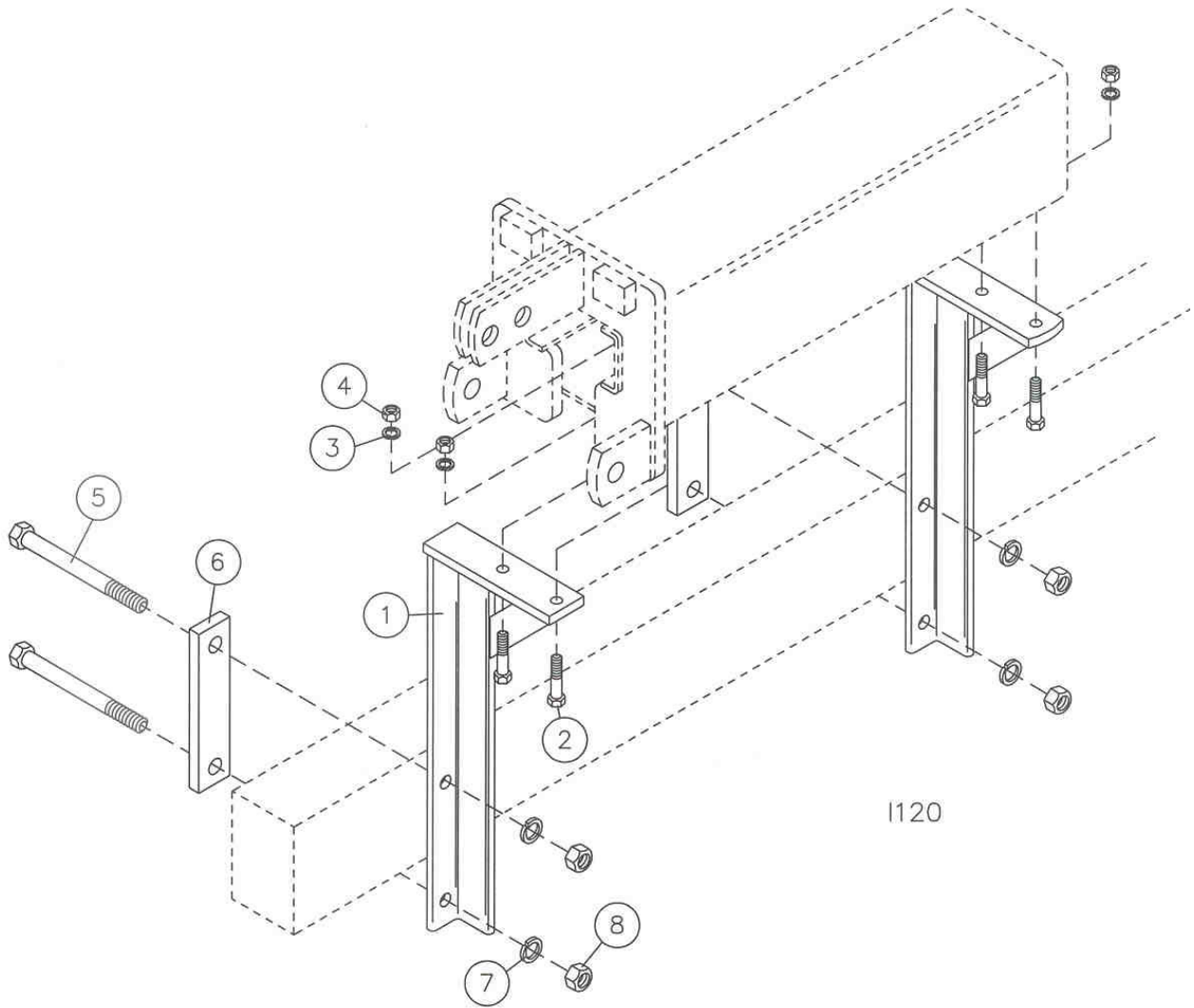
# PARTS IDENTIFICATION

## 6150-091 - MARKER MOUNT KIT, WHITE 6000

| Key | Qty. | Part No. | Description                   |
|-----|------|----------|-------------------------------|
| 1   | 4    | 2570-478 | 3/4 X 7" X 9" U-BOLT ZYD      |
| 2   | 4    | 6150-288 | MARKER MOUNT W.A., WHITE 6000 |
| 3   | 8    | 2502-317 | 1/2-13 X 1 3/4" HHCS GR.5 ZYD |
| 4   | 8    | 2520-504 | 3/4-10 HEX NUT ZYD            |
| 5   | 8    | 2525-352 | 1/2 MED. LOCKWASHER ZYD       |
| 6   | 8    | 2520-352 | 1/2-13 HEX NUT ZYD            |
| 7   | 8    | 2525-501 | 3/4 MED LOCKWASHER ZYD        |



# PARTS IDENTIFICATION

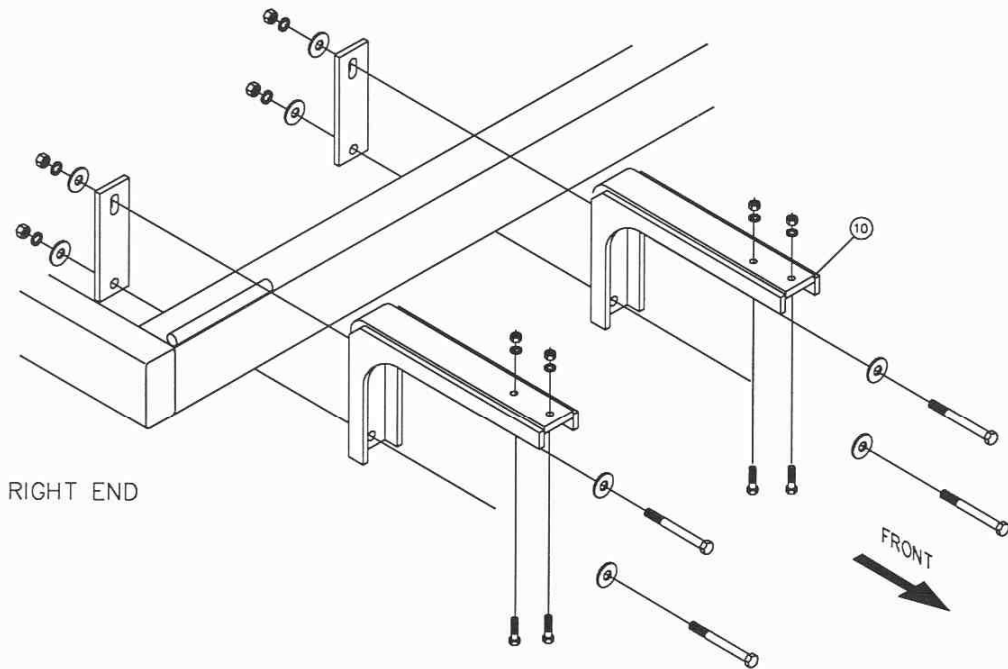
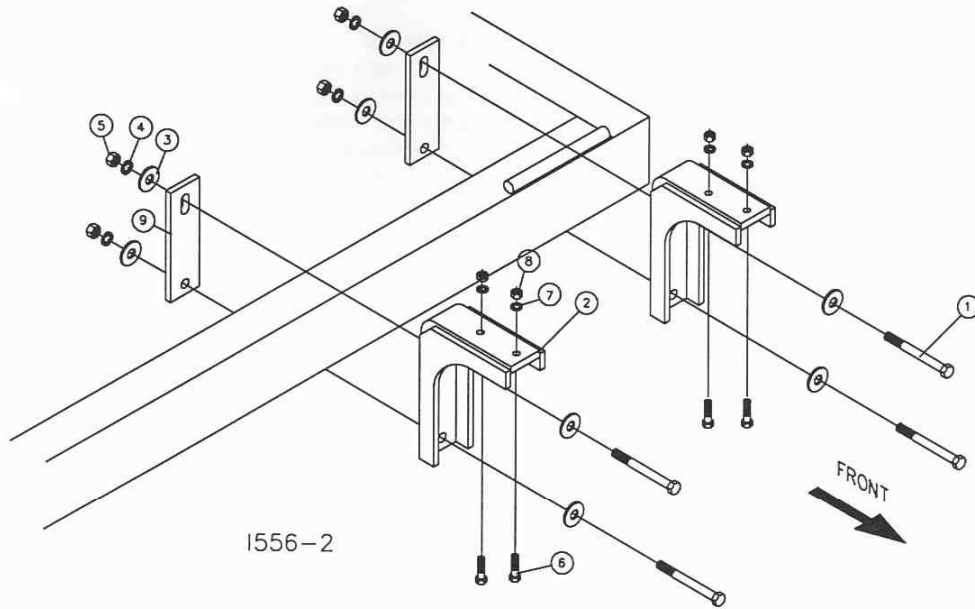


## 6150-101 – DMI 4 X 6 MARKER MTG. KIT

| KEY | QTY. | PART NO. | DESCRIPTION                  |
|-----|------|----------|------------------------------|
| 1   | 4    | 6150-229 | MOUNT ANGLE, DMI W.A.        |
| 2   | 8    | 2502-317 | 1/2-13 X 1-3/4 HHCS GR 5 ZYD |
| 3   | 8    | 2525-352 | 1/2 MED. LOCKWASHER ZP.      |
| 4   | 8    | 2520-352 | 1/2-13 HEX NUT ZP.           |
| 5   | 8    | 2502-510 | 3/4-10 X 6 HHCS GR 5 ZYD     |
| 6   | 4    | 6150-363 | CLAMP PLATE 6 X 6 BAR        |
| 7   | 8    | 2525-501 | 3/4 MED LOCKWASHER ZYD       |
| 8   | 8    | 2520-504 | 3/4-10 HEX NUT ZYD           |

# PARTS IDENTIFICATION

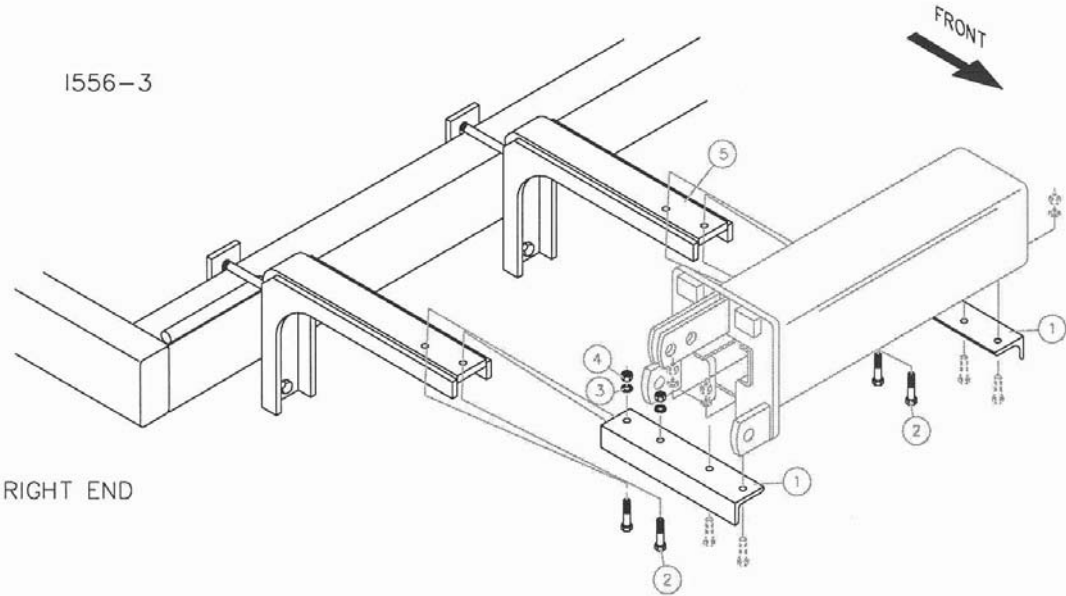
6150-162 MARKER MOUNTING, JD 1690/1890



| KEY | QTY | PART NO. | DESCRIPTION                   |
|-----|-----|----------|-------------------------------|
| 1   | 8   | 2502-510 | 3/4-10 X 6" HHCS GR.5 ZP      |
| 2   | 2   | 6001-284 | MARKER MOUNT<SHORT>           |
| 3   | 8   | 2526-501 | 3/4 STD. FLATWASHER ZP        |
| 4   | 8   | 2525-501 | 3/4 MED. LOCKWASHER ZP        |
| 5   | 8   | 2520-504 | 3/4-10 HEX NUT ZP             |
| 6   | 8   | 2502-296 | 1/2-13 X 2-1/2" HHCS GR. 5 ZP |
| 7   | 8   | 2525-352 | 1/2 MED. LOCKWASHER ZP        |
| 8   | 8   | 2520-352 | 1/2-13 HEX NUT ZP             |
| 9   | 4   | 6001-493 | MARKER MOUNT CLAMP PLATE      |
| 10  | 2   | 6150-286 | MARKER MOUNT<LONG>            |

# PARTS IDENTIFICATION

6150-165 6" EXTENSION BRACKET KIT



| KEY | QTY | PART NO. | DESCRIPTION                        |
|-----|-----|----------|------------------------------------|
| 1   | 2   | 6150-475 | MARKER EXTENSION                   |
| 2   | 4   | 2502-351 | 1/2-13 X 2 HHCS GR.5               |
| 3   | 4   | 2525-352 | 1/2 MED LOCKWASHER                 |
| 4   | 4   | 2520-352 | 1/2-13 HEX NUT                     |
| 5   | 2   | 6150-286 | MARKER MOUNT (LONG) REFERENCE ONLY |

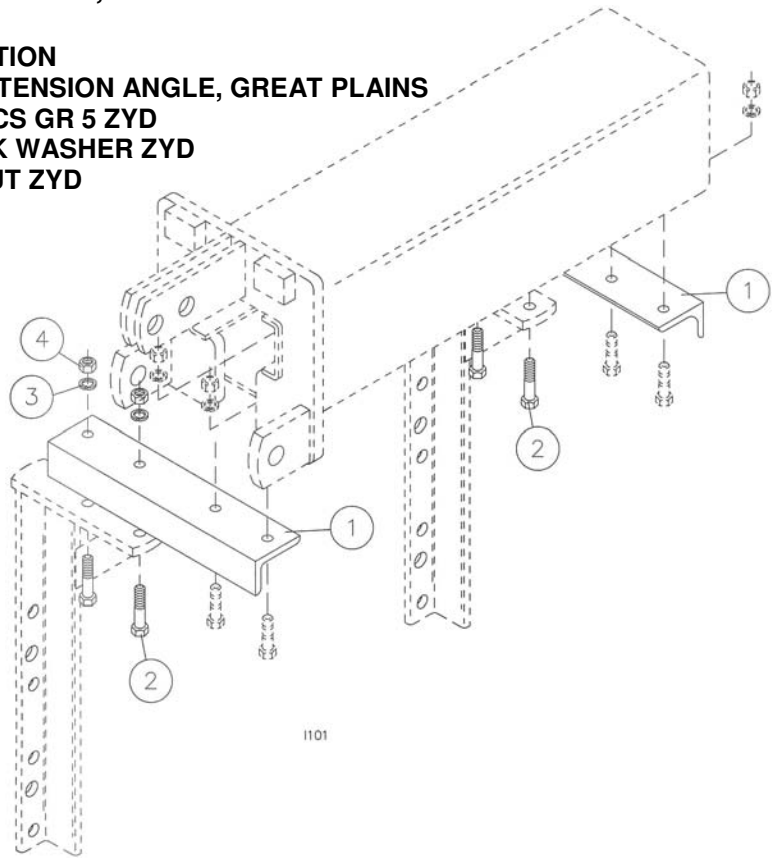


# MARKER EXTENSION KITS

(FOR USE WITH GRASS SEEDER ATTACHEMENTS)

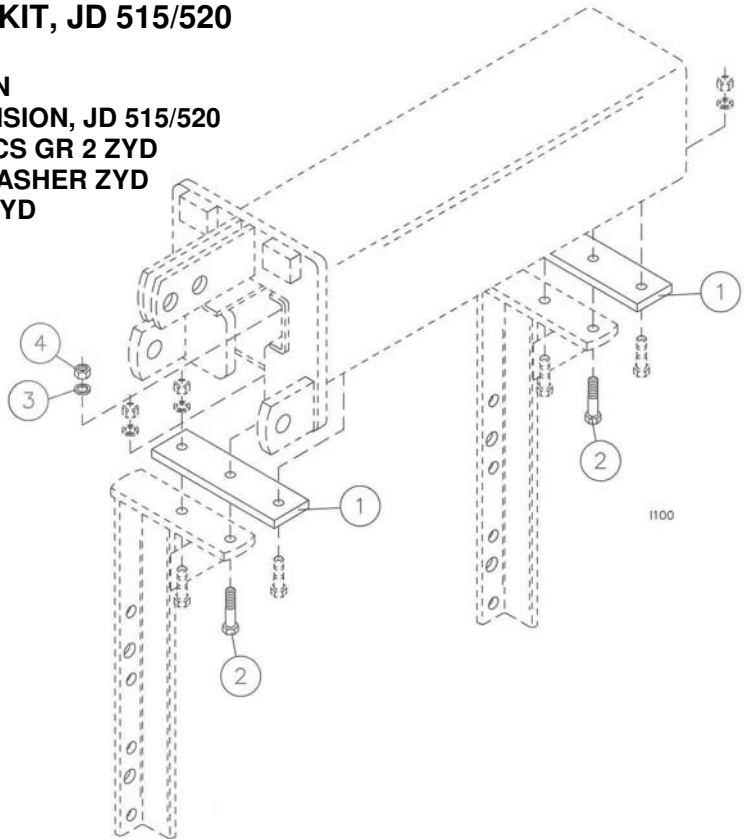
## 6001-179 – MARKER EXTENSION KIT, GREAT PLAINS

| KEY | QTY. | PART NO. | DESCRIPTION                          |
|-----|------|----------|--------------------------------------|
| 1   | 4    | 6001-459 | MARKER EXTENSION ANGLE, GREAT PLAINS |
| 2   | 8    | 2502-351 | 1/2-13 X 2 HHCS GR 5 ZYD             |
| 3   | 8    | 2525-352 | 1/2 MED LOCK WASHER ZYD              |
| 4   | 8    | 2520-352 | 1/2-13 HEX NUT ZYD                   |

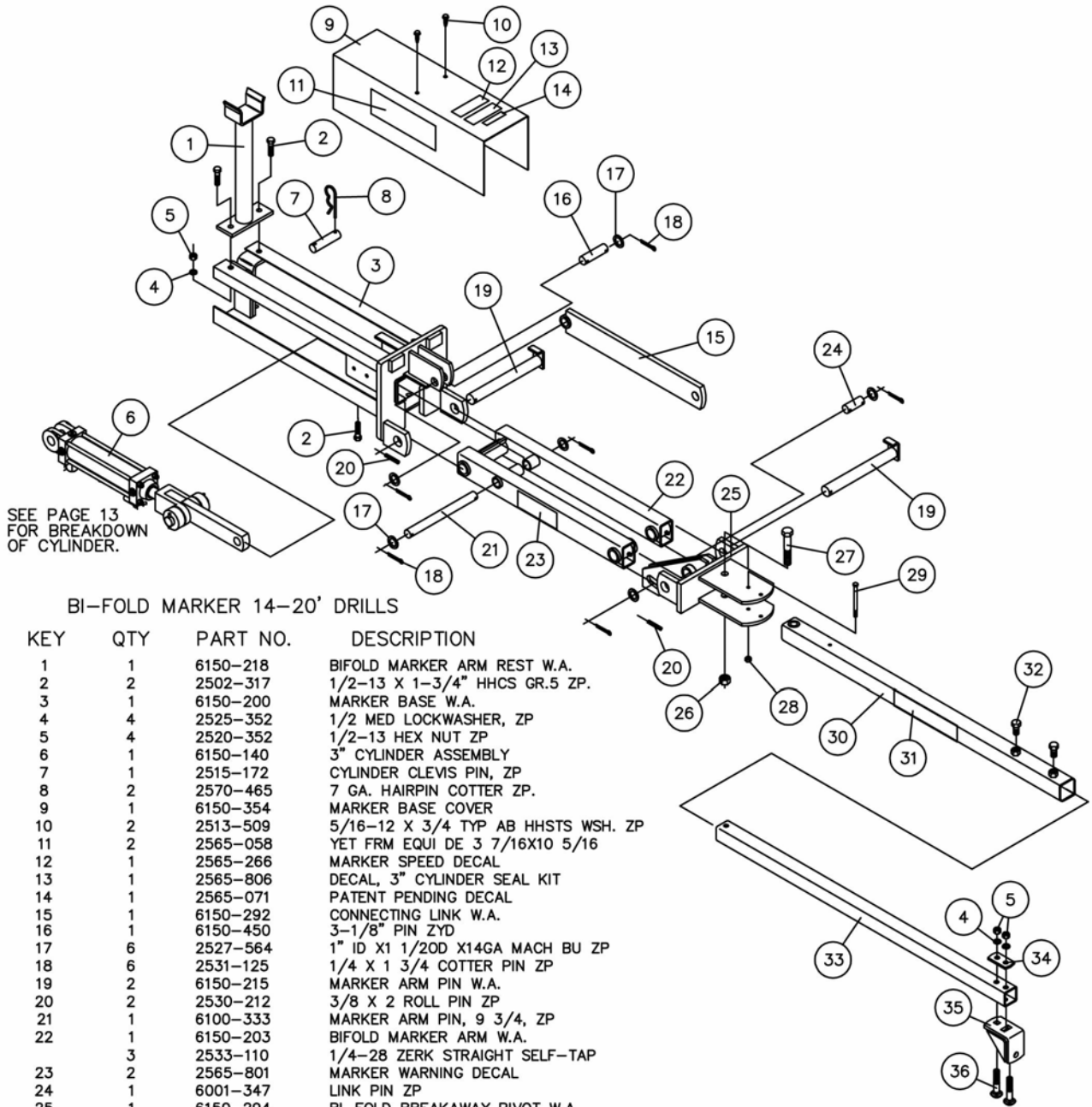


## 6001-199 – MARKER EXTENSION KIT, JD 515/520

| KEY | QTY. | PART NO. | DESCRIPTION                  |
|-----|------|----------|------------------------------|
| 1   | 4    | 6001-476 | MARKER EXTENSION, JD 515/520 |
| 2   | 4    | 2502-296 | 1/2-13 X 2-1/2 HHCS GR 2 ZYD |
| 3   | 4    | 2525-352 | 1/2 MED LOCK WASHER ZYD      |
| 4   | 4    | 2520-352 | 1/2-13 HEX NUT ZYD           |



# PARTS IDENTIFICATION

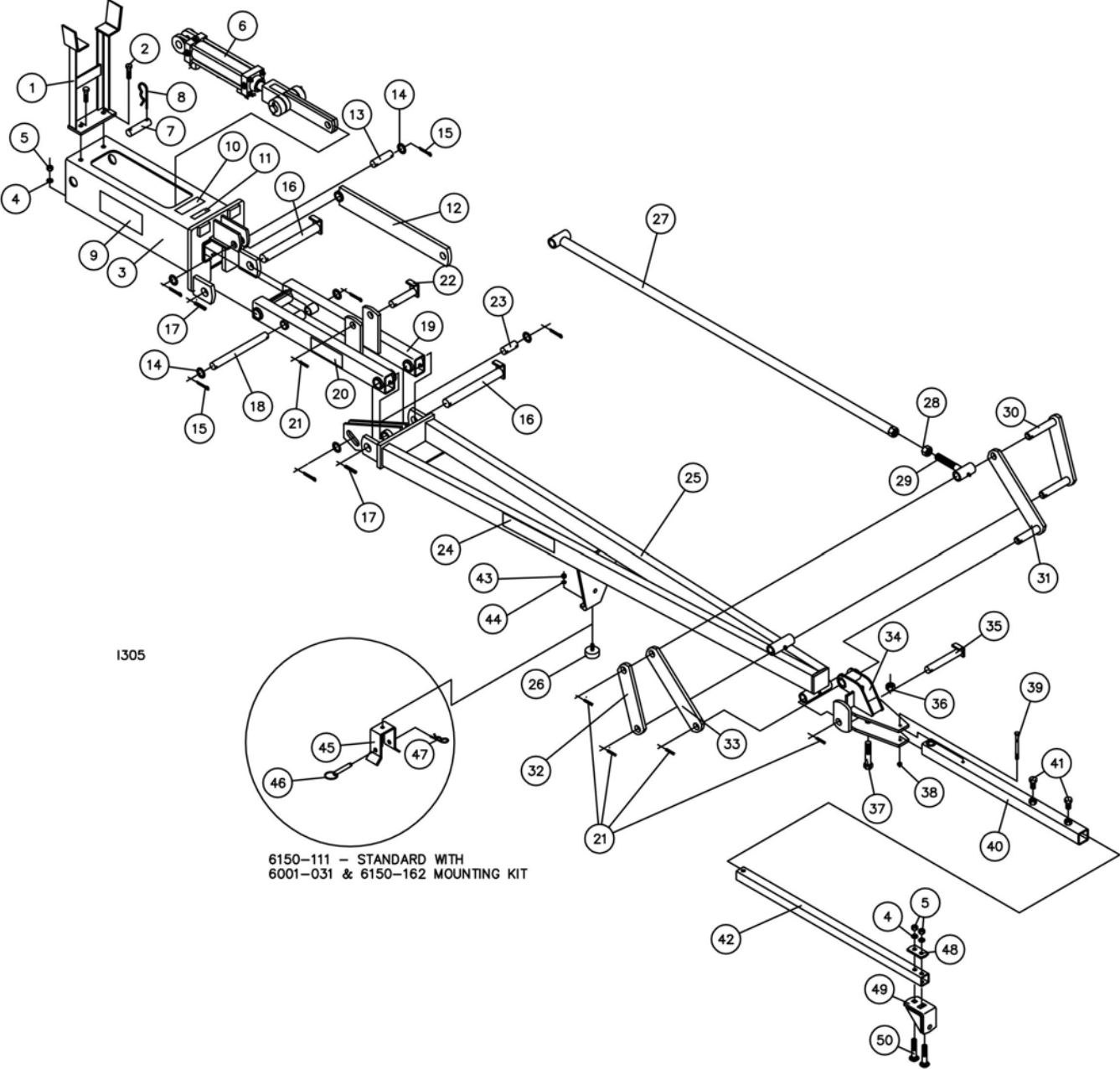


BI-FOLD MARKER 14-20' DRILLS

| KEY | QTY | PART NO. | DESCRIPTION                        |
|-----|-----|----------|------------------------------------|
| 1   | 1   | 6150-218 | BIFOLD MARKER ARM REST W.A.        |
| 2   | 2   | 2502-317 | 1/2-13 X 1-3/4" HHCS GR.5 ZP.      |
| 3   | 1   | 6150-200 | MARKER BASE W.A.                   |
| 4   | 4   | 2525-352 | 1/2 MED LOCKWASHER, ZP             |
| 5   | 4   | 2520-352 | 1/2-13 HEX NUT ZP                  |
| 6   | 1   | 6150-140 | 3" CYLINDER ASSEMBLY               |
| 7   | 1   | 2515-172 | CYLINDER CLEVIS PIN, ZP            |
| 8   | 2   | 2570-465 | 7 GA. HAIRPIN COTTER ZP.           |
| 9   | 1   | 6150-354 | MARKER BASE COVER                  |
| 10  | 2   | 2513-509 | 5/16-12 X 3/4 TYP AB HHSTS WSH. ZP |
| 11  | 2   | 2565-058 | YET FRM EQUI DE 3 7/16X10 5/16     |
| 12  | 1   | 2565-266 | MARKER SPEED DECAL                 |
| 13  | 1   | 2565-806 | DECAL, 3" CYLINDER SEAL KIT        |
| 14  | 1   | 2565-071 | PATENT PENDING DECAL               |
| 15  | 1   | 6150-292 | CONNECTING LINK W.A.               |
| 16  | 1   | 6150-450 | 3-1/8" PIN ZYD                     |
| 17  | 6   | 2527-564 | 1" ID X1 1/20D X14GA MACH BU ZP    |
| 18  | 6   | 2531-125 | 1/4 X 1 3/4 COTTER PIN ZP          |
| 19  | 2   | 6150-215 | MARKER ARM PIN W.A.                |
| 20  | 2   | 2530-212 | 3/8 X 2 ROLL PIN ZP                |
| 21  | 1   | 6100-333 | MARKER ARM PIN, 9 3/4, ZP          |
| 22  | 1   | 6150-203 | BIFOLD MARKER ARM W.A.             |
| 23  | 3   | 2533-110 | 1/4-28 ZERK STRAIGHT SELF-TAP      |
| 24  | 2   | 2565-801 | MARKER WARNING DECAL               |
| 25  | 1   | 6001-347 | LINK PIN ZP                        |
| 26  | 1   | 6150-294 | BI-FOLD BREAKAWAY PIVOT W.A.       |
| 27  | 1   | 2520-515 | 3/4-10 LOCK HEX NUT ZP             |
| 28  | 1   | 2502-406 | 3/4-10 X 4-1/2 HHCS GR 5 ZP        |
| 29  | 1   | 2520-205 | 5/16-18 LOCK HEX NUT ZP            |
| 30  | 1   | 2502-223 | 5/16-18 X 4 HHCS GR 2 ZP           |
| 31  | 1   | 6150-202 | PIVOT TUBE, 15-20 & 30-35          |
| 32  | 2   | 2565-800 | MARKER DANGER DECAL                |
| 33  | 2   | 2503-379 | 5/8-11 X 1 SQ HCPSS GR 5 ZP        |
| 34  | 1   | 6001-483 | BI-FOLD SLIDE TUBE                 |
| 35  | 1   | 6001-481 | CLAMP PLATE                        |
| 36  | 1   | 6001-270 | TRI-FOLD MARKER DISC BRKT W.A.     |
| 36  | 2   | 2505-348 | 1/2-13 X 3 1/2 CAR BLT GR 5 ZYD    |

1304-1

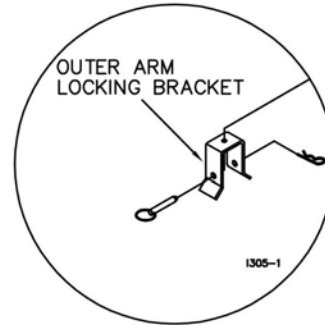
# PARTS IDENTIFICATION



# PARTS IDENTIFICATION

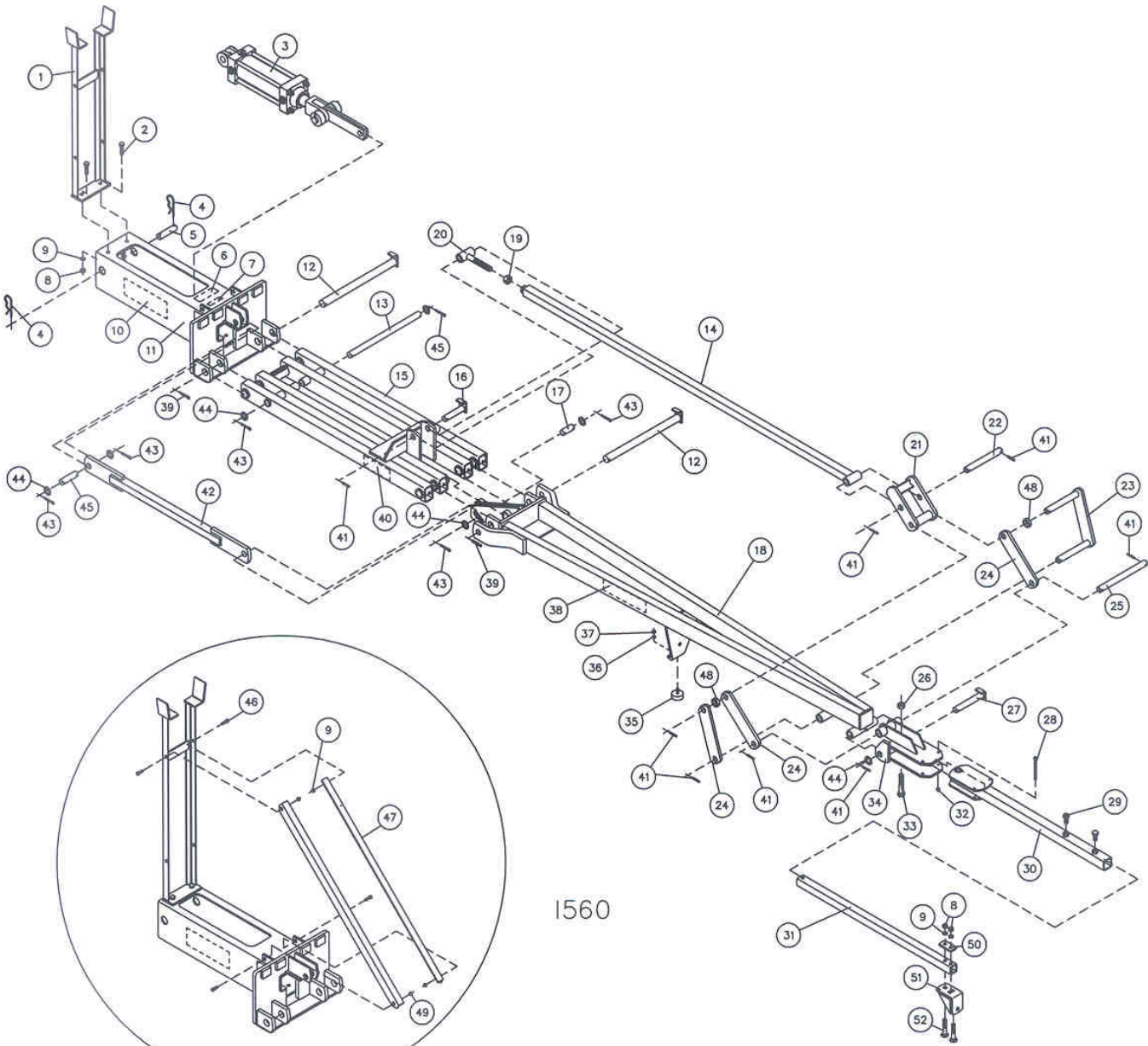
## TRI-FOLD MARKER 24-35' DRILLS

| KEY | QTY | PART NO. | DESCRIPTION                            |
|-----|-----|----------|--|
| 1   | 1   | 6150-206 | TRI-FOLD MARKER ARM REST               |
| 2   | 2   | 2502-317 | 1/2"-13 X 1-3/4" HHCS GR.5             |
| 3   | 1   | 6150-236 | TRI-FOLD MARKER BASE                   |
| 4   | 4   | 2525-352 | 1/2" LOCKWASHER                        |
| 5   | 4   | 2520-352 | 1/2" HEX NUT                           |
| 6   | 1   | 6150-145 | 3" CYLINDER ASSEMBLY 24'&30'           |
|     | 1   | 6150-146 | 3-1/2" CYLINDER ASSEMBLY 35'           |
| 7   | 1   | 2515-172 | CYLINDER CLEVIS PIN                    |
| 8   | 2   | 2570-465 | 7 GA. HAIRPIN COTTER                   |
| 9   | 2   | 2565-058 | YETTER FARM EQUIPMENT 3-7/16"X10-5/16" |
| 10  | 1   | 2565-806 | DECAL, 3" CYLINDER SEAL KIT 24'&30'    |
|     | 1   | 2565-810 | DECAL, 3 1/2" CYLINDER SEAL KIT 35'    |
| 11  | 1   | 2565-071 | PATENT PENDING DECAL                   |
| 12  | 1   | 6150-292 | CONNECTING LINK W.A.                   |
| 13  | 1   | 6150-450 | 3-1/8" PIN ZYD                         |
| 14  | 6   | 2527-564 | BUSHING 1" ID X1-1/2"OD X14GA          |
| 15  | 6   | 2531-125 | 1/4" X 1-3/4" COTTER PIN               |
| 16  | 2   | 6150-215 | MARKER ARM PIN                         |
| 17  | 2   | 2530-212 | 3/8" X 2" ROLL PIN                     |
| 18  | 1   | 6100-333 | MARKER ARM PIN, 9-3/4"                 |
| 19  | 1   | 6150-207 | TRI-FOLD MARKER ARM                    |
|     | 3   | 2533-110 | 1/4"-28 ZERK STRAIGHT SELF-TAP         |
| 20  | 2   | 2565-801 | MARKER WARNING DECAL                   |
| 21  | 5   | 2530-152 | 1/4" X 1-1/2" ROLL PIN                 |
| 22  | 1   | 6150-217 | TRI-FOLD PIPE PIN                      |
| 23  | 1   | 6001-347 | LINK PIN                               |
| 24  | 2   | 2565-800 | MARKER DANGER DECAL                    |
| 25  | 1   | 6150-219 | 24' MID-ARM                            |
|     | 1   | 6150-212 | 30' MID-ARM                            |
|     | 1   | 6150-224 | 35' MID-ARM                            |
| 26  | 1   | 1300-507 | RUBBER FOOT                            |
| 27  | 1   | 6150-220 | 24' MID-ARM PIPE                       |
|     | 1   | 6150-208 | 30' MID-ARM PIPE                       |
|     | 1   | 6150-225 | 35' MID-ARM PIPE                       |
| 28  | 1   | 2520-544 | 7/8"-9 HEX NUT                         |
| 29  | 1   | 6150-213 | PIPE ADJUST                            |
| 30  | 1   | 6150-222 | SMALL FOLDING LINK                     |
| 31  | 1   | 6150-223 | LARGE FOLDING LINK                     |
| 32  | 1   | 6150-320 | SMALL FOLDING LINK                     |
| 33  | 1   | 6150-322 | LARGE FOLDING LINK ZP                  |
| 34  | 1   | 6150-249 | TRI-FOLD BREAKAWAY                     |
| 35  | 1   | 6150-216 | TRI-FOLD BREAKAWAY PIN                 |
| 36  | 1   | 2520-515 | 3/4"-10 LOCK HEX NUT ZP                |
| 37  | 1   | 2502-406 | 3/4"-10 X 4-1/2" HHCS GR 5             |
| 38  | 1   | 2520-205 | 5/16"-18 LOCK HEX NUT                  |
| 39  | 1   | 2502-224 | 5/16"-18 X 4" HHCS GR 5                |
| 40  | 1   | 6150-247 | PIVOT TUBE 24'                         |
|     | 1   | 6150-202 | PIVOT TUBE, 15'-20' & 30'-35'          |
| 41  | 2   | 2503-379 | 5/8"-11 X 1" SQ. HCPSS GR 5            |
| 42  | 1   | 6150-402 | TRI-FOLD SLIDE TUBE                    |
|     | 1   | 6150-401 | 35' TRI-FOLD SLIDE TUBE                |
| 43  | 1   | 2520-251 | 3/8"-16 HEX NUT                        |
| 44  | 1   | 2525-251 | 3/8" LOCKWASHER                        |
| 45  | 1   | 6150-385 | OUTER ARM LOCK BRACKET                 |
| 46  | 1   | 2984-320 | PIN                                    |
| 47  | 1   | 2570-448 | HAIRPIN COTTER                         |
| 48  | 1   | 6001-481 | CLAMP PLATE                            |
| 49  | 1   | 6001-270 | DISC BRACKET                           |
| 50  | 2   | 2505-348 | 1/2"-13 X 3-1/2" CARRIAGE BOLT GR 5    |



6150-111 - STANDARD WITH  
6001-031 & 6150-162 MOUNTING KITS

# PARTS IDENTIFICATION



DETAIL No.1

6/98 TO 6/04

## PARTS IDENTIFICATION

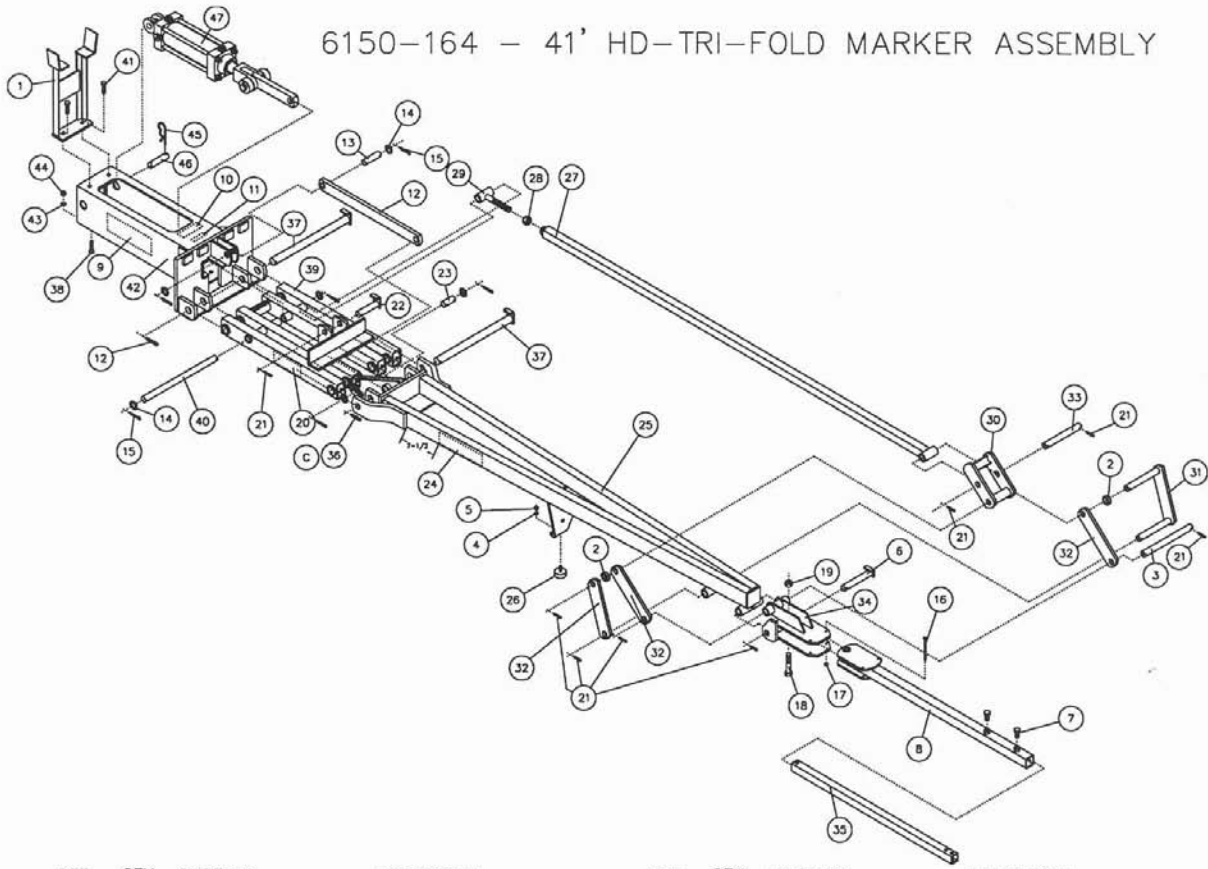
### 6150-128 41' TRI-FOLD MARKER ASSY.

| KEY | QTY | PART NO. | DESCRIPTION                       |
|-----|-----|----------|-----------------------------------|
| 1   | 1   | 6150-264 | TRI-FOLD MARKER ARM REST W.A.     |
| 2   | 2   | 2502-317 | 1/2-13 X 1-3/4" HHCS GR.5 ZP.     |
| 3   | 1   | 6150-129 | 41, MARKER 4" CYL ASSY.           |
| 4   | 2   | 2570-465 | 7 GA. HAIRPIN COTTER ZP.          |
| 5   | 1   | 2515-172 | CYLINDER CLEVIS PIN, ZP           |
| 6   | 1   | 2565-812 | DECAL, 4" CYLINDER SEAL KIT       |
| 7   | 1   | 2565-071 | PATENT PENDING DECAL              |
| 8   | 2   | 2520-352 | 1/2-13 HEX NUT ZP                 |
| 9   | 2   | 2525-352 | 1/2 MED LOCKWASHER, ZP            |
| 10  | 2   | 2565-058 | YET FRM EQUI DE 3 7/16X10 5/16    |
| 11  | 1   | 6150-272 | 41' MARKER BASE W.A.              |
| 12  | 2   | 6150-254 | 41' MARKER ARM PIN W.A. ZYD       |
| 13  | 1   | 6150-418 | 41' MARKER ARM PIN 16-13/16", ZYD |
| 14  | 1   | 6150-255 | 41' MID-ARM PIPE W.A.             |
| 15  | 1   | 6150-265 | 41' MARKER ARM W.A.               |
| 16  | 1   | 6150-217 | TRI-FOLD PIPE PIN W.A. ZP         |
| 17  | 1   | 6001-347 | LINK PIN ZP                       |
| 18  | 1   | 6150-263 | 41' MID ARM W.A.                  |
| 19  | 1   | 2520-544 | 7/8-9 HEX NUT ZP                  |
| 20  | 1   | 6150-213 | PIPE ADJUST W.A.                  |
| 21  | 1   | 6150-275 | PIVOT BRACKET WA                  |
| 22  | 1   | 6150-449 | 5-29/32" PIN ZYD                  |
| 23  | 1   | 6150-278 | 41' LINK W.A.                     |
| 24  | 3   | 6150-455 | 41' LINKS                         |
| 25  | 1   | 6150-448 | 6-25/32" PIN ZYD                  |
| 26  | 1   | 2520-515 | 3/4-10 LOCK HEX NUT ZP            |
| 27  | 1   | 6150-216 | TRI-FOLD BREAKAWAY PIN W.A. ZP    |
| 28  | 1   | 2502-227 | 5/16-18 X 5 1/4 HHCS GR 5 ZP      |
| 29  | 2   | 2503-379 | 5/8-11 X 1 SQ HCPSS GR 5 ZP       |
| 30  | 1   | 6150-277 | 41' TRI-FOLD PIVOT TUBE W.A.      |
| 31  | 1   | 6150-447 | 41' TRI-FOLD SLIDE TUBE           |
| 32  | 1   | 2520-205 | 5/16-18 LOCK HEX NUT ZP           |
| 33  | 1   | 2502-508 | 3/4-10 X 5 1/2 HHCS GR 5 ZP       |
| 34  | 1   | 6150-276 | TRI-FOLD BREAKAWAY W.A.           |
| 35  | 1   | 1300-507 | RUBBER FOOT                       |
| 36  | 1   | 2525-251 | 3/8 MED. LOCKWASHER ZP            |
| 37  | 1   | 2520-251 | 3/8-16 HEX NUT ZP                 |
| 38  | 2   | 2565-800 | MARKER DANGER DECAL               |
| 39  | 2   | 2530-212 | 3/8 X 2 ROLL PIN ZP               |
| 40  | 2   | 2565-801 | MARKER WARNING DECAL              |
| 41  | 8   | 2530-152 | 1/4 X 1 1/2 ROLL PIN ZP           |
| 42  | 1   | 6150-270 | CONNECTING LINK W.A.              |
| 43  | 6   | 2531-125 | 1/4 X 1 3/4 COTTER PIN ZP         |
| 44  | 7   | 2527-564 | 1" ID X1 1/20D X14GA MACH BU ZP   |
| 45  | 1   | 6150-450 | 3-1/8" PIN ZYD                    |
| 46  | 4   | 2502-300 | 1/2-13 X 1 1/4" HHCS GR.5 ZP      |
| 47  | 2   | 6150-432 | DIAGONAL BRACE                    |
| 48  | 2   | 6150-458 | 1/2" SPACER (1.5 OD X 1.02 ID)    |
| 49  | 4   | 2520-357 | 1/2-13 LOCK HEX NUT ZP            |
| 50  | 1   | 6001-481 | CLAMP PLATE                       |
| 51  | 1   | 6001-270 | TRI-FOLD MARKER DISC BRKT W.A.    |
| 52  | 2   | 2505-348 | 1/2-13 X 3 1/2 CAR BLT GR 5 ZYD   |

**6/98 TO 6/04**

# PARTS IDENTIFICATION

## 6150-164 - 41' HD-TRI-FOLD MARKER ASSEMBLY



| DET | QTY | PART NO. | DESCRIPTION                      | DET | QTY      | PART NO.                       | DESCRIPTION                 |
|-----|-----|----------|----------------------------------|-----|----------|--------------------------------|-----------------------------|
| 1   | 1   | 6150-206 | TRI-FOLD ARM SUPPORT             | 25  | 1        | 6150-263                       | 41' HD TRI-FOLD MID-ARM     |
| 2   | 2   | 6150-458 | 1/2" SPACER (1.5" OD X 1.02" ID) | 26  | 1        | 1300-507                       | RUBBER FOOT                 |
| 3   | 1   | 6150-448 | 6-25/32" PIN                     | 27  | 1        | 6150-255                       | 41' MID-ARM PIPE            |
| 4   | 1   | 2525-251 | 3/8" LOCKWASHER                  | 28  | 1        | 2520-544                       | 7/8-9 HEX NUT               |
| 5   | 1   | 2520-251 | 3/8"-16 HEX NUT                  | 29  | 1        | 6150-213                       | PIPE ADJUST                 |
| 6   | 1   | 6150-216 | TRI-FOLD BREAKAWAY PIN           | 30  | 1        | 6150-275                       | PIVOT BRACKET               |
| 7   | 2   | 2503-379 | 5/8"-11 X 1" SQ HCPSS GR 5       | 31  | 1        | 6150-278                       | 41' LINK                    |
| 8   | 1   | 6150-283 | 35' HD TRI-FOLD PIVOT TUBE       | 32  | 3        | 6150-455                       | 41' LINK PLATE              |
| 9   | 2   | 2565-058 | YET FRM EQUIP 3-7/16"X10-5/16"   | 33  | 1        | 6150-449                       | 5-29/32" PIN                |
| 10  | 1   | 2565-814 | DECAL, 4" CYLINDER SEAL KIT      | 34  | 1        | 6150-276                       | 41' TRI-FOLD BREAKAWAY      |
| 11  | 1   | 2565-071 | PATENT PENDING DECAL             | 35  | 1        | 6150-472                       | MARKER EXTENSION TUBE, 41'  |
| 12  | 1   | 6150-473 | CONNECTING LINK, 41'             | 36  | 2        | 2530-212                       | 3/8" X 2" ROLL PIN          |
| 13  | 1   | 6150-450 | 3-1/8" PIN                       | 37  | 2        | 6150-254                       | 41' MARKER ARM PIN          |
| 14  | 6   | 2527-564 | WASHER,1" IDX1-1/2"OD X14GA      | 38  | 2        | 2502-296                       | 1/2"-13 X 2-1/2" HHCS GR. 5 |
| 15  | 6   | 2531-125 | 1/4"X 1-3/4" COTTER PIN          | 39  | 1        | 6150-279                       | TRI-FOLD MARKER ARM         |
| 16  | 1   | 2502-227 | 5/16"-18 X 5-1/4" HHCS GR 5      | 7   | 2533-110 | 1/4"-28 ZERK STRAIGHT SELF-TAP |                             |
| 17  | 1   | 2520-205 | 5/16"-18 LOCK HEX NUT            | 40  | 1        | 6150-418                       | MARKER ARM PIN,16-13/16"    |
| 18  | 1   | 2502-508 | 3/4"-10 X 5-1/2" HHCS GR 5       | 41  | 2        | 2502-317                       | 1/2"-13 X 1-3/4" HHCS GR. 5 |
| 19  | 1   | 2520-515 | 3/4"-10 LOCK HEX NUT             | 42  | 1        | 6150-287                       | 41' TRI-FOLD MARKER BASE    |
| 20  | 2   | 2565-801 | MARKER WARNING DECAL             | 43  | 4        | 2525-352                       | 1/2" LOCKWASHER             |
| 21  | 8   | 2530-152 | 1/4" X 1-1/2" ROLL PIN           | 44  | 4        | 2520-352                       | 1/2"-13 HEX NUT             |
| 22  | 1   | 6150-217 | TRI-FOLD PIPE PIN                | 45  | 2        | 2570-465                       | 7 GA. HAIRPIN COTTER        |
| 23  | 1   | 6001-347 | LINK PIN                         | 46  | 1        | 2515-172                       | CYLINDER CLEVIS PIN         |
| 24  | 2   | 2565-800 | MARKER DANGER DECAL              | 47  | 1        | 6150-129                       | 4" CYLINDER ASSEMBLY 41'    |

8/04-PRESENT

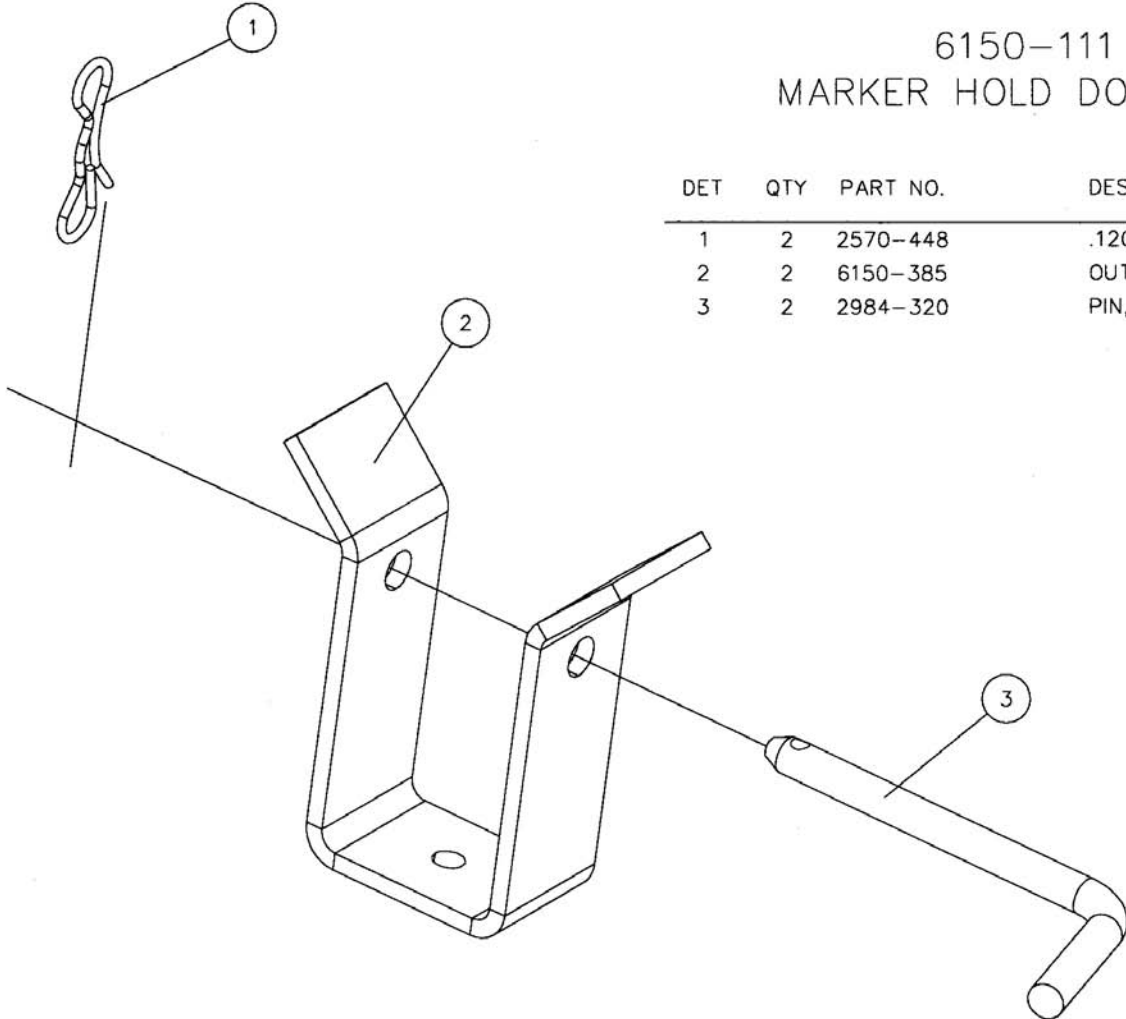
## TROUBLESHOOTING

| Problem  | Cause                               | Solution  |
|--|-------------------------------------|---|
| Markers do not function correctly                      | Markers raise and lower voluntarily | <p>Check tractor hydraulic system</p> <p>Check hydraulic hose couplings</p> <p>Purge air from hydraulic system see Installation: hydraulic hoses</p> <p>Hydraulic cylinder failure, repair as necessary</p> <p>Check sequence valve for dirt or damage.</p> |
| Marker blade does not leave good enough mark           | Blade not moving sufficient dirt    | <p>Adjust angle of blade to be more aggressive.</p> <p>Use notched marker blade, 6001-495. (6001-610 w/depth band assembly.)</p> <p>Reverse blades on hubs to push dirt out.</p>  |
| Both markers activate at same time                     | Sequence valve not operating        | <p>Air in hydraulic lines</p> <p>Check for dirt in spool or replace sequence valve</p>  |
| Marker blade digging too much dirt                     | Blade set at incorrect angle        | Adjust angle of blade to be less aggressive   |
| Tri-fold marker will not raise from operating position | Not enough hydraulic pressure       | <p>Check and repair tractor hydraulic pump (2400 PSI minimum)</p> <p>Replace hydraulic cylinder with 1/2" larger diameter cylinder. Example: replace a 3" x 8" cylinder with a 3-1/2" x 8" cylinder</p>   |



# PARTS IDENTIFICATION

## 6150-111 MARKER HOLD DOWN KIT



| DET | QTY | PART NO. | DESCRIPTION                |
|-----|-----|----------|----------------------------|
| 1   | 2   | 2570-448 | .120 BOWTIE LOCKING COTTER |
| 2   | 2   | 6150-385 | OUTER ARM LOCK BRKT        |
| 3   | 2   | 2984-320 | PIN, SKID ADJUSTMENT ZYD   |

1778

## NOTES:

## NOTES:

# Our name Is getting known

**J**ust a few years ago, Yetter products were sold primarily to the Midwest only. Then we embarked on a program of expansion and moved into the East, the South, the West and now north into Canada. We're even getting orders from as far away as Australia and Africa.

**S**o, when you buy Yetter products . . .you're buying a name that's recognized. A name that's known and respected. A name that's become a part of American agriculture and has become synonymous with quality and satisfaction in the field of conservation tillage.

**T**hank you.

**YETTER MANUFACTURING CO.**  
Colchester, IL 62326-0358 ☎ 309/776-4111  
Toll Free 800/447-5777  
Fax 309/776-3222  
Website: [www.yetterco.com](http://www.yetterco.com)  
E-mail: [info@yetterco.com](mailto:info@yetterco.com)

2565-376\_REV\_E  
☎ 03/14