



**PLEASE REFER TO THE OPERATORS MANUAL FOR YOUR
SPECIFIC COMBINE FOR PERTINENT SAFETY PRECAUTIONS**

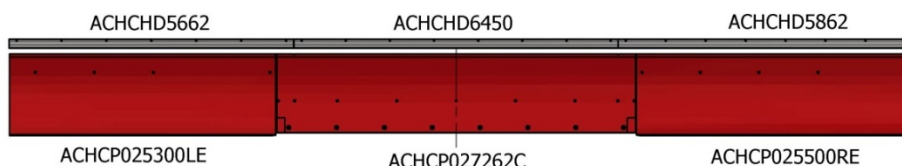
INSTALLATION INSTRUCTIONS

CaseIH Corn Head Auger Trough Liner

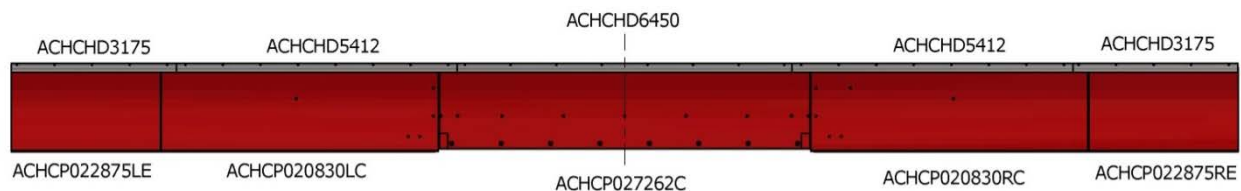
**IT IS VERY IMPORTANT THAT YOU READ THE ENTIRE
INSTRUCTION SHEET BEFORE STARTING INSTALLATION**

**THE TERMS “LEFT”, “RIGHT”, “FRONT”, and “REAR” ARE DETERMINED BY FACING IN THE
DIRECTION THE COMBINE WILL TRAVEL WHEN IN USE.**

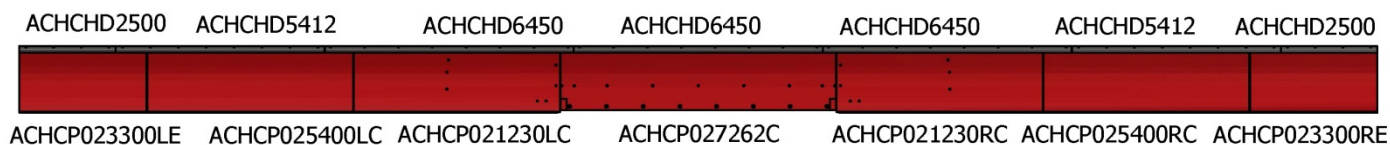
ACHCK020630 – 3 Panel Kit



ACHCK020830 – 5 Panel Kit



ACHCK021230 – 7 Panel Kit



Before you begin installation, compare the contents of box with the enclosed “Packing Slip” to confirm that you have received the correct panels and associated hardware for your model header. Note: The poly liner may be installed over heavily worn metal and over holes in the metal floor if the holes do not exceed 4 inches in width (front to back) and are less than 24 inches in length (left to right). Use Layout above for correct location of panels and hold down strips

STEP**1**

Clean the entire length of the auger trough to remove all dirt and crop residue.

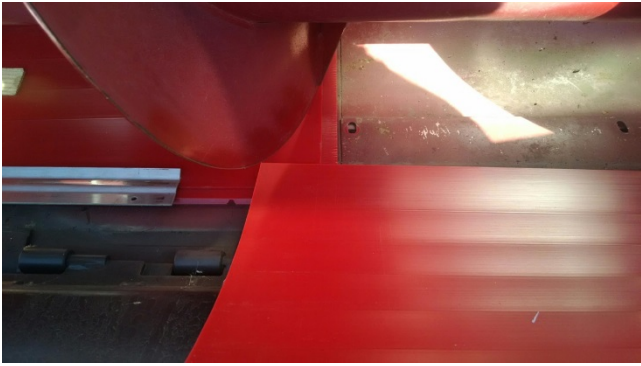
**STEP****2**

Remove all bolts, patches/repairs that would restrict the poly liners from laying flat against the top surface of the metal trough. Bolts will be re-installed thru the liner. Use caution as part of the metal floor will be loose without the bolts.

STEP**3**

Insert the Center Panel Under the auger and use wood shims to wedge panel down tight against floor. Be sure the panel is centered to the throat opening.





STEP 4

Insert the left center and right center panels. Line up the bolt holes in the panel to the holes in the floor. Be careful not to move the loose metal floor out of position when installing the panels.



STEP 5

Shim left center and right center panels tight against the floor. Install 5/16 x 1" carriage bolts provided in all holes in the panels except the very center hole (re-install existing hex head bolt) and the holes along the back of the throat.

STEP**6**

From behind the head drill 3/8 holes thru the liner where you removed bolts that connect the floor panel to the frame at either side of the throat. Install 5/16x 1" carriage Bolts as shown in picture to the right.



When using power tools, basic safety precautions should always be followed to reduce the risk of personal injury.

WEAR SAFETY GLASSES OR GOGGLES

STEP**7**

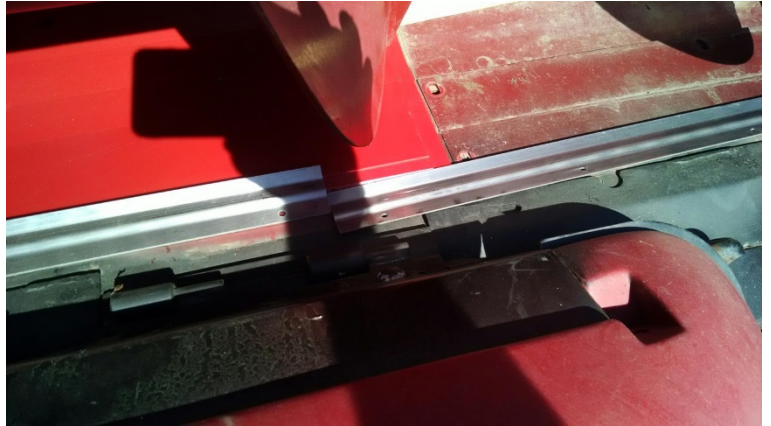
Insert the remaining panels. Use the 3/16 shim to put proper overlap between panels; then use wood shims to hold panels in position during installation. Drill additional 3/8 holes into the left center and right center panels from underneath the head thru the floor and poly liner at the low point of the auger trough; one approximately 3" from the outer seam and another centered in the panel. Repeat this process on the left and right end panels approximately 3" from each edge. Install 1/4 x 1 1/4 fanged elevator bolts, washers and nyloc nuts into these added holes.

ACHC02_19SEP2018

Copyright© 2018 Poly Tech Industries, Inc.

STEP 8

Install Stainless Steel Hold down Strips so the front edge of the strip is over the top of the Poly liners by $\frac{5}{8}$ ". Start with the center hold down strip (ACHCHD6450) center it to the notches at the front of the center panel.



Install the $\frac{3}{16}$ " rivets by drilling $\frac{13}{64}$ " hole and installing one rivet at a time. Pay careful attention to hold down location as you work your way from one end to the other to keep



STEP 9

Drill the holes along the back of the throat opening with the 17/64" drill bit.



STEP 10

Install 1/4" x 1/4" long hammer rivets in each hole as shown in pictures above and to the right.



Be sure to readjust the auger height for desired clearance, see your owner's manual for proper adjustment.

**Question or Comments
1-800-542-7659
polytech@polyskid.com**

ACHC02_19SEP2018
Copyright© 2018 Poly Tech Industries, Inc.